



HIGH-PRESSURE LIFTING BAGS

NOVA 15 bar (218 psi)

World
Innovation 1. 5.



15
BAR

Sawa®

Extremely durable

Lifting height marking

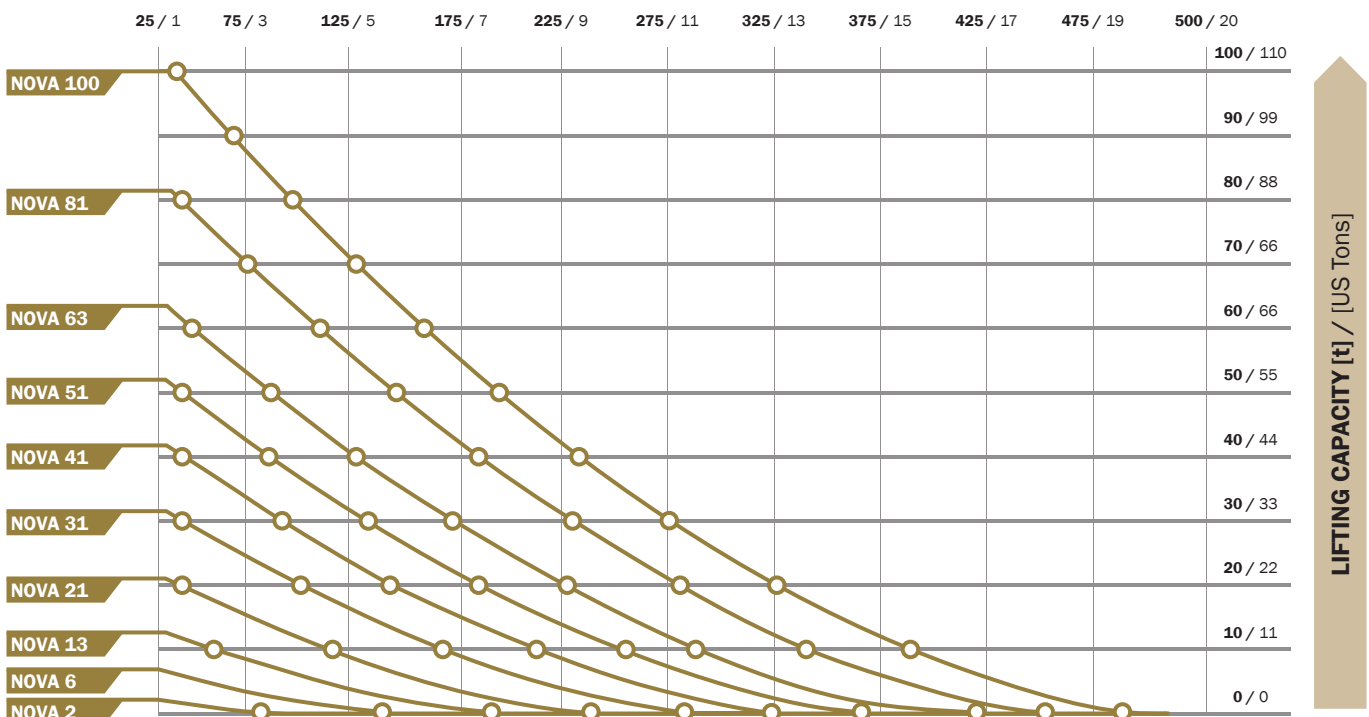
**EN 13731
NFPA 1936**

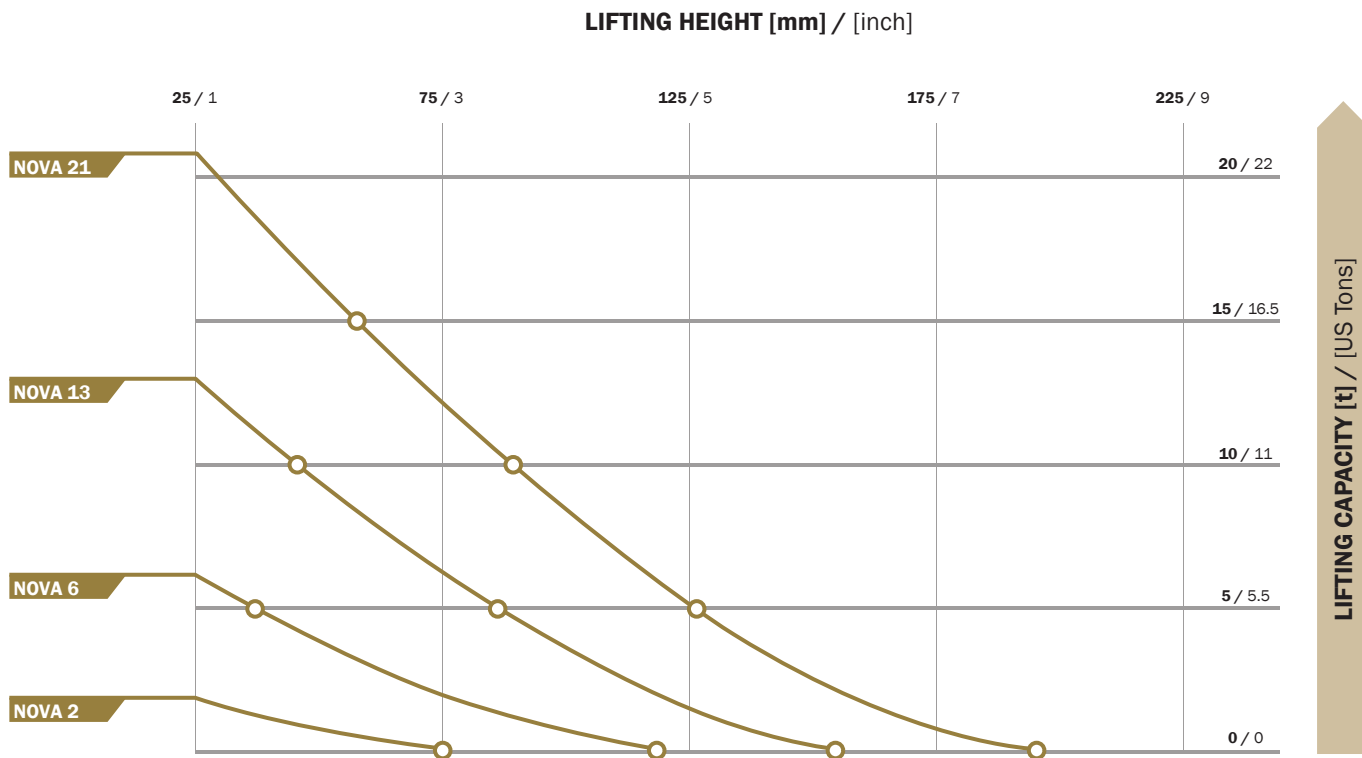
Interlocking system

TECHNICAL DATA

TYPE	PART NUMBER	DIMENSIONS			WEIGHT	WORKING PRESSURE	AIR REQUIREMENT	MAX. LIFTING CAPACITY	MAX. LIFTING HEIGHT
		LENGTH	WIDTH	HEIGHT					
		[cm] / [inch]	[cm] / [inch]	[cm] / [inch]					
NOVA 2	608061	15 / 6"	15 / 6"	2.2 / 0.9"	0.5 / 1.2	15 / 218	5.2 / 0.18	1.7 / 1.9	8 / 3"
NOVA 6	608062	23.5 / 9.2"	23.5 / 9.2"	2.2 / 0.9"	1.2 / 3	15 / 218	25.8 / 0.91	6.2 / 6.8	13 / 4.9"
NOVA 13	608063	32 / 12.6"	32 / 12.6"	2.5 / 1"	2.5 / 5.5	15 / 218	73.2 / 2.59	12.3 / 13.5	17 / 6.9"
NOVA 21	608064	40 / 15.7"	40 / 15.7"	2.5 / 1"	4 / 8.8	15 / 218	152 / 5.37	20.5 / 22.6	22 / 8.5"
NOVA 31	608065	48 / 18.9"	48 / 18.9"	2.5 / 1"	5.7 / 12.6	15 / 218	273.4 / 9.66	31.2 / 34.3	26 / 10.4"
NOVA 41	608066	55 / 22"	55 / 22"	2.5 / 1"	7.5 / 16.5	15 / 218	422 / 14.9	41.3 / 45.4	30 / 11.9"
NOVA 51	608067	61 / 24"	61 / 24"	2.5 / 1"	9.3 / 20.5	15 / 218	585 / 20.66	51.4 / 56.5	34 / 13.2"
NOVA 63	608068	67 / 26.4"	67 / 26.4"	2.5 / 1"	11.2 / 24.7	15 / 218	786 / 27.76	63.2 / 69.5	37 / 14.4"
NOVA 81	608069	76 / 30"	76 / 30"	2.7 / 1.1"	15.5 / 34.2	15 / 218	1167 / 41.21	81.5 / 89.7	41 / 16.3"
NOVA 100	608070	84 / 33"	84 / 33"	2.7 / 1.1"	19 / 41.9	15 / 218	1595 / 56.33	100.3 / 110.3	46 / 17.9"

LIFTING HEIGHT [mm] / [inch]





RUBBER INFLATION HOSES



TYPE	5 m (16')	10 m (33')
RED	1.5 kg (3.3 lbs)	3 kg (6.6 lbs)
YELLOW	611195	611197
BLUE	611191	611192
GREY	611193	611194
	611198	611199

CONTROLLERS



**DOUBLE DEADMAN
CONTROLLER 2 EXP 15**
15 bar (218 psi)
3.0 kg (6.6 lbs)
609799



**PROTECTIVE
CASE FOR EXP
CONTROLLERS**
1.2 kg (2.6 lbs)
613218

OTHER ACCESSORIES



PRESSURE REDUCER
15 bar (174 psi)
300 bar (4350 psi)
2.2 kg (4.9 lbs)
EN - 609794
CGA - 615247

Inflation accessories have been designed for precision control, high reliability and long life. They are used with all of our lifting bags – from the source of air to controllers.

APPLICABLE
FOR ALL
LIFTING
BAGS



COMPRESSED AIR CYLINDER
300 bar (4350 psi),
6l (366 cu.in.)
9.0 kg (20 lbs)
528746



CARRY-ON VALISE FOR COMPRESSED AIR CYLINDER
0.1 kg (2.2 lbs)
519811



UNIVERSAL CONNECTOR KIT
0.2 kg (0.44 lbs)
519809



TRUCK TYRE VALVE CONNECTION
0.1 kg (2.2 lbs)
519806



TRUCK TYRE VALVE
0.05 kg (0.11 lbs)
519805



COMPRESSED AIR MAINS
0.05 kg (0.11 lbs)
519808



TRUCK TYRE INFLATOR ADAPTER
0.05 kg (0.11 lbs)
519807



DUAL CONNECTOR FOR COMPRESSED AIR CYLINDERS
1.0 kg (2.2 lbs)
529383



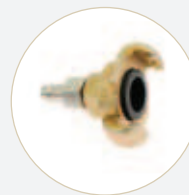
TRIPLE CONNECTOR FOR COMPRESSED AIR CYLINDERS
1.2 kg (2.6 lbs)
529384



TRUCK COMPRESSED AIR CONNECTION
0.4 kg (0.88 lbs)
529005



TRUCK COMPRESSED AIR CONNECTION-BLIND COUPLING
0.5 kg (1.1 lbs)
529006



ADAPTER FOR CONSTRUCTION SITE COMPRESSOR
0.2 kg (0.44 lbs)
529704



SAFETY CARRIER RACK-TWO CYLINDER
6l (366 cu.in.)
MODUL-TROLLEY SYSTEM
3.0 kg (6.6 lbs)
542868



SAFETY CARRIER RACK-FOUR CYLINDER
6l (366 cu.in.)
MODUL-TROLLEY SYSTEM
5.0 kg (11 lbs)
542872



LOADING PLATES
LOAD PLATE # 350 556308
3.5 kg (7.7 lbs)
LOAD PLATE # 420 556309
5.0 kg (11 lbs)
LOAD PLATE # 520 556310
7.5 kg (16.5 lbs)
LOAD PLATE # 670 556311
13.0 kg (29 lbs)

All above accessories are suitable for EU market, US versions available upon request.