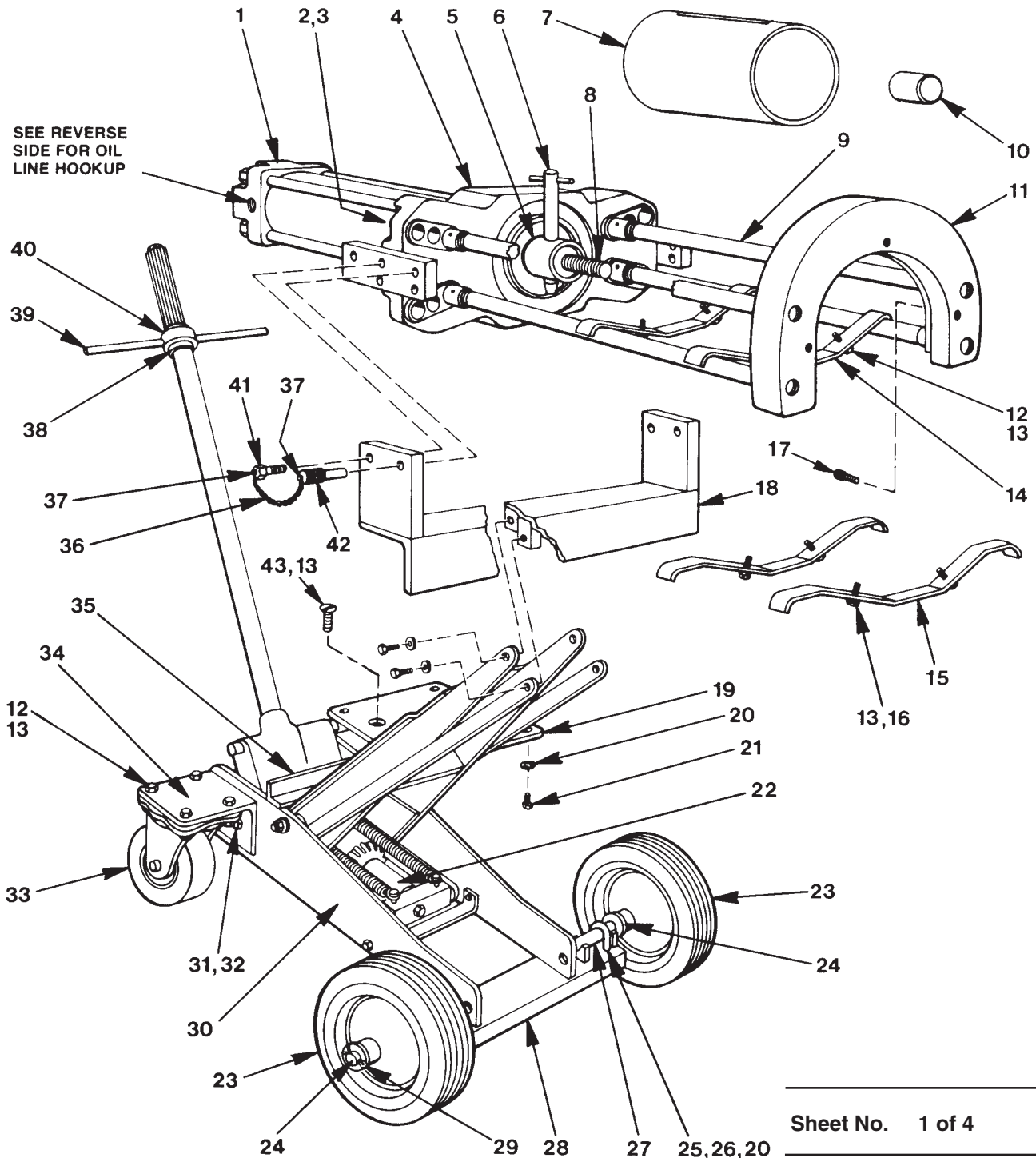


UNIVERSAL PULLER/INSTALLER USED ON RAILROAD BEARING SERVICE EQUIPMENT RAM WITH SERVICE JACK



Parts List, Form No. 100410, Back sheet 1 of 4

Item No.	Part No.	No. Req'd	Description
1	50061	1	Cylinder Ass'y. (100 Ton, Double Acting – See Sheet 4 of 4)
2	10224	4	Hex Nut (1-1/4-12)
3	24767	4	Spacer
4	40116	1	Cylinder Mounting Plate
5	30413	1	Adapter
6	20001	1	Coupling Pin
7	30416	1	Installing Tube
8	30414	1	Guide Tube Coupling
9	30405	4	Leg & Collar
10	21260	1	Adapter Forcing Plug
11	30523	1	Pulling Shoe (Includes Item #17)
12	10052	AR	Hex Hd. Cap Screw (3/8 x 1-1/4 Lg.)
13	10204	AR	Hex Nut (3/8-16 UNC)
14	30613	2	Installing Tube Cradle
15	30614	2	Installing Tube Cradle
16	21498	4	Special Hex Hd. Cap Screw
17	11214	3	Soc. Hd. Cap Screw
18	40327	1	Cylinder Support Ass'y.
19	51127	1	Plate
20	10249	8	Lockwasher (1/2 bolt size)
21	10076	4	Hex Hd. Cap Screw (1/2-20 x 7/8 Lg.)
22	18725	1	Jack Power Unit (See Sheet 3 of 4)
23	10468	2	Wheel (12" x 3"; Includes Item #24)
24	11253	4	SAE Washer
25	20582	2	Axle "U" Bolt

Item No.	Part No.	No. Req'd	Description
26	10208	4	Hex Nut (1/2-13 UNC)
27	20584	2	Axle Shaft
28	30530	1	Channel Assembly
29	10472	2	Cotter Pin
30	11283	1	Hydraulic Jack-Blackhawk (Includes Item #22)
31	10084	4	Hex Hd. Cap Screw (1/2-20 x 1-3/4 Lg.)
32	10390	4	Hex Jam Nut (1/2-20 UNF)
33	10467	2	Swivel Caster Wheel
34	31053	2	Angle Plate
35	22228	1	Support Angle
36	10473	2 Ft.	Sash Chain
37	10463	4	Drive Screw
38	39369	1	Handle Bushing
39	39370	1	Handle
40	14368	1	Retaining Ring
41	21264	2	Mounting Bolt
42	20049	2	Stop Pin
43	10503	4	Flat Hd. Cap Screw (3/8-16 x 1-1/2 Lg.)

PARTS INCLUDED BUT NOT SHOWN

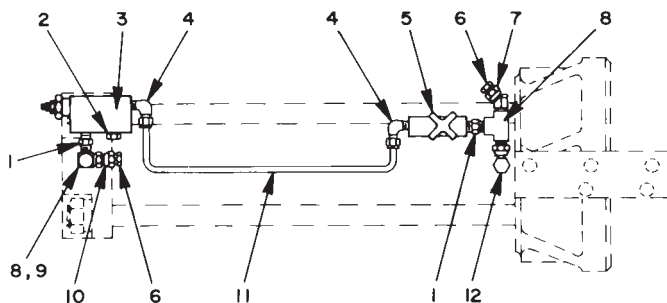
37702	2	Decal
*202092	1	Decal, Trade Name
11543	1	Gauge
*36891	2	Hydraulic Hose
*10474	3	Street Elbow (3/8 NPTF)

NOTE: AR (As Required).

51151 Ram, Mounting Plate & Oil Line Assembly includes Items 1 & 4.

51167 Jack Assembly consists of Item 12, 13, & 18 thru 43 & all items marked with an asterisk (*).

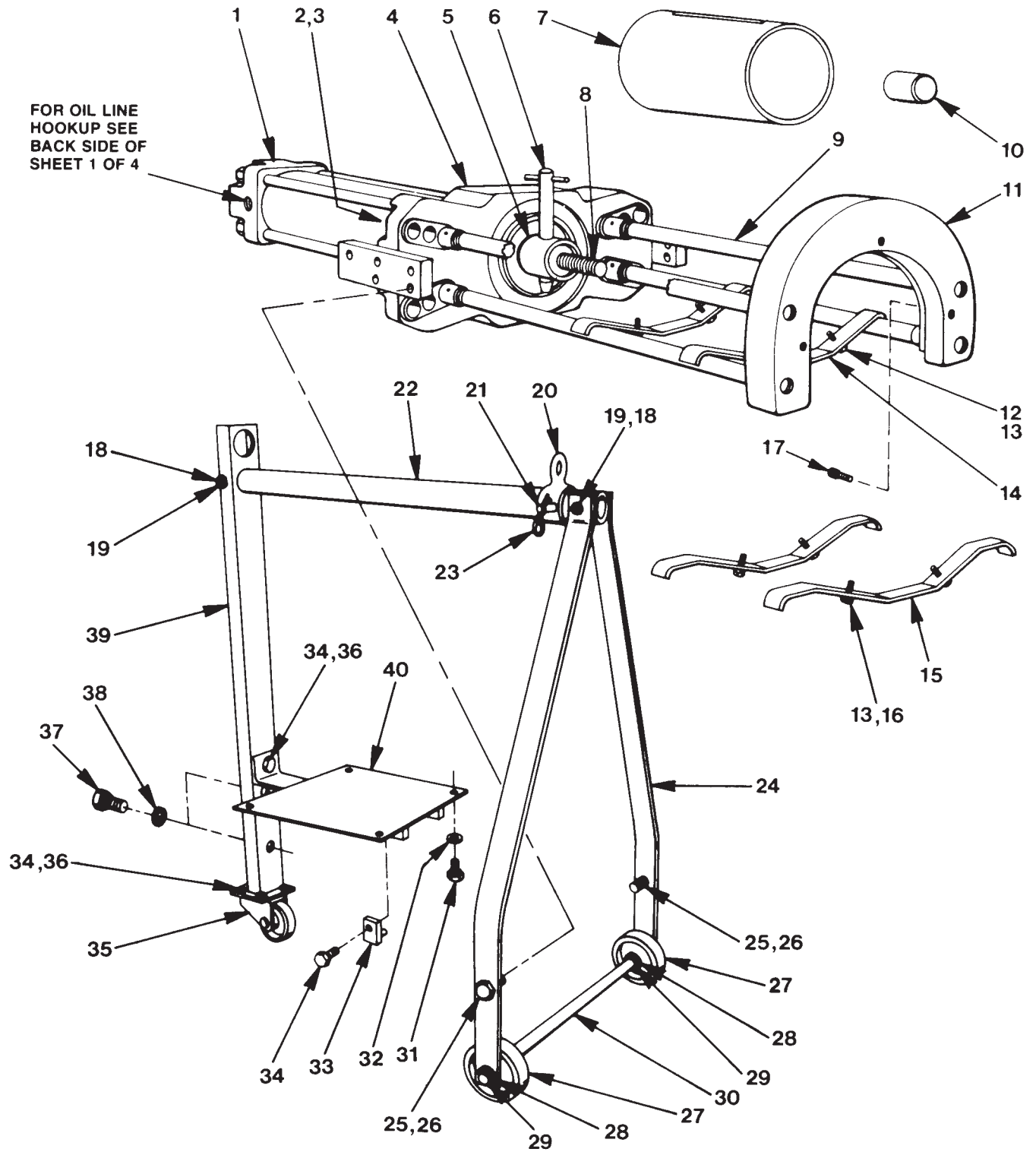
OIL LINE HOOKUP



Item No.	Part No.	No. Req'd	Description
1	10673	2	Hex Nipple (3/8 NPTF)
2	14690	1	Pipe Plug
3	9623	1	Pressure Regulator Assembly (Set at 6,000 PSI – See Form No. 100412)
4	10666	2	Elbow
5	11060	1	Shut-Off Valve
6	22640	2	Pipe Plug
7	10648	1	Adapter Union (45° Elbow)
8	10623	2	Service Tee
9	10474	1	Elbow
10	10469	1	Adapter Union (Straight)
11	80590	1	Oil Line
12	10470	1	Adapter Union (90° Elbow)

NOTE: 51151 Ram, Mounting Plate & Oil Line Assembly includes all the above items.

RAM WITH OVERHEAD SLING



Parts List, Form No. 100410, Back sheet 2 of 4

Item No.	Part No.	No. Req'd	Description
1	50061	1	Cylinder Ass'y. (100 Ton, Double Acting – See Sheet 4 of 4)
2	10224	4	Hex Nut (1-1/4-12)
3	24767	4	Spacer
4	40116	1	Cylinder Mounting Plate
5	30413	1	Adapter
6	20001	1	Coupling Pin
7	30416	1	Installing Tube
8	30414	1	Guide Tube Coupling
9	30405	4	Leg & Collar
10	21260	1	Adapter Forcing Plug
11	30523	1	Pulling Shoe (Includes Item #17)
12	10052	4	Hex Hd. Cap Screw (3/8-16 x 1-1/4 Lg.)
13	10204	8	Hex Nut (3/8-16 UNC)
14	30613	2	Installing Tube Cradle
15	30614	2	Installing Tube Cradle
16	21498	4	Special Hex Hd. Cap Screw
17	11214	3	Soc. Hd. Cap Screw
18	13894	2	Hex Hd. Cap Screw (1/2-13 x 3-3/4 Lg.)
19	15013	2	Hex Locknut (1/2-13 UNC)
20	37718	1	Lifting Bracket
21	17784	1	Clevis Pin
22	37715	1	Cross Tube
23	14528	1	Hair Pin Cotter
24	51130	2	Strap
25	10120	2	Hex Hd. Cap Screw (3/4-10 x 2" Lg.)
26	16941	2	Hex Locknut (3/4-10 UNC)
27	17786	2	Wheel (8" dia.)
28	12330	6	Washer
29	11902	4	E-ring
30	37714	1	Axle Shaft
31	10076	4	Hex Hd. Cap Screw (1/2-20 x 7/8 Lg.)
32	10249	4	Lockwasher (1/2 bolt size)
33	203846	2	Strap Assembly
34	10049	7	Hex Hd. Cap Screw (3/8-16 x 1" Lg.)
35	17785BK2	1	Swivel Caster (6" dia.)
36	12013	5	Hex Locknut (3/8-16 UNC)
37	15081	2	Hex Hd. Cap Screw (1"-8 x 1-1/2 Lg.)
38	24824	2	Special Washer
39	42928	1	Rear Support Bracket
40	51128	1	Pump Mounting Bracket

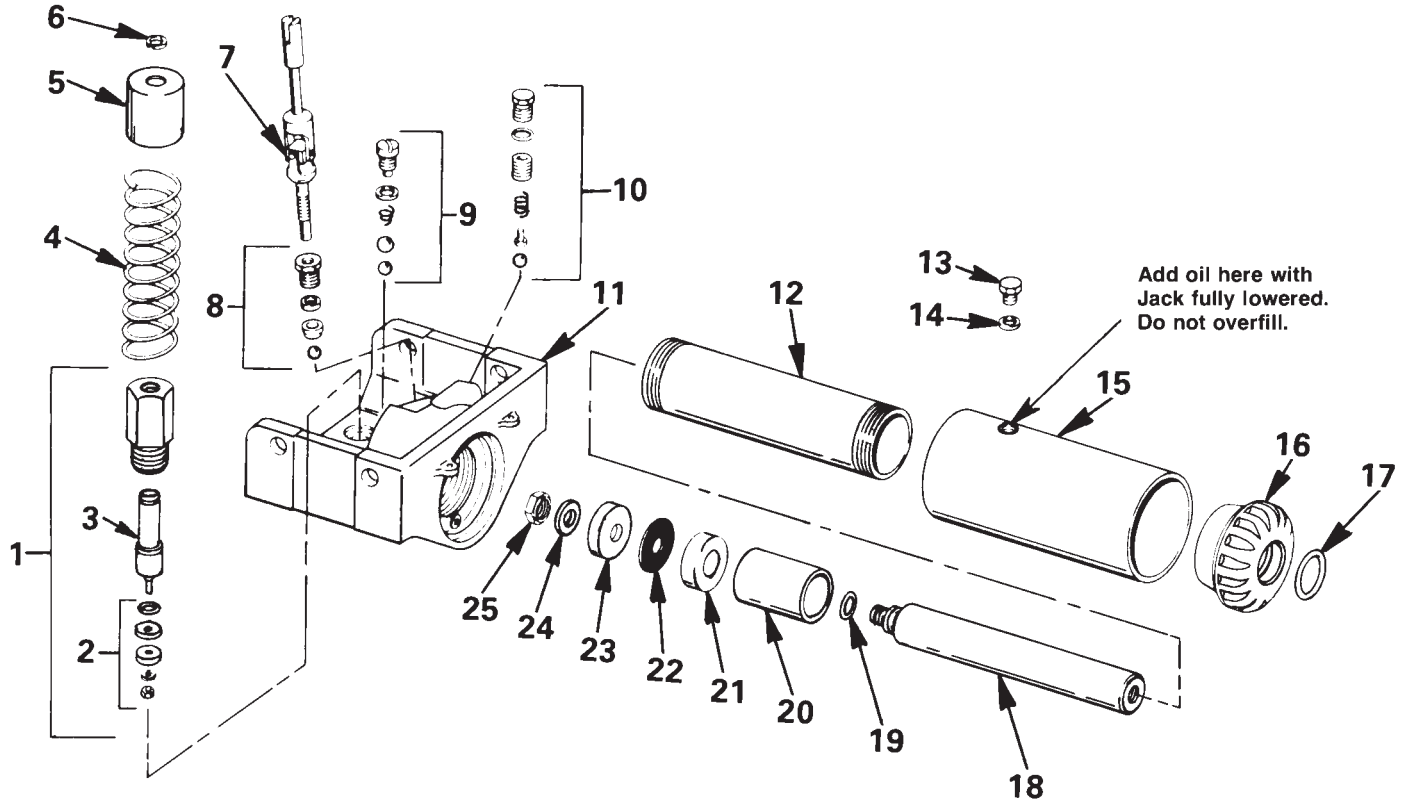
PARTS INCLUDED BUT NOT SHOWN

37702	2	Decal
11543	1	Gauge
*36891	1	Hydraulic Hose (39 in.)
*10474	3	Street Elbow (3/8 NPTF)
*36890	1	Hydraulic Hose (2 ft.)

NOTE: 51151 Ram, Mounting Plate & Oil Line Assembly includes Items 1 & 4.

203854 Sling Assembly consists of Items 18 thru 40 and all items marked with an asterisk (*).

HYDRAULIC JACK POWER UNIT ASSEMBLY (1.5 Ton Capacity)



Parts List, Form No. 100410, Back sheet 3 of 4

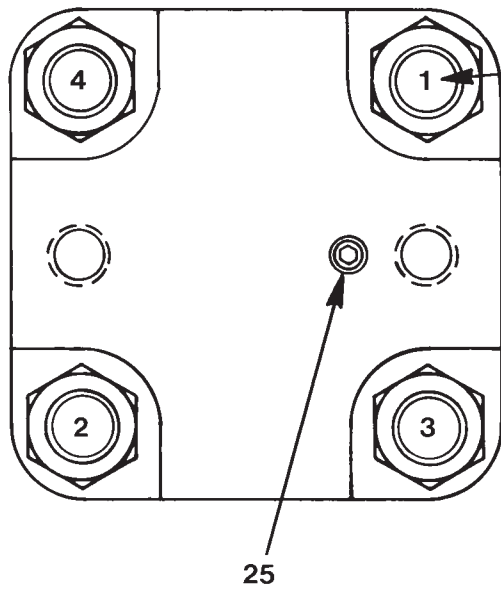
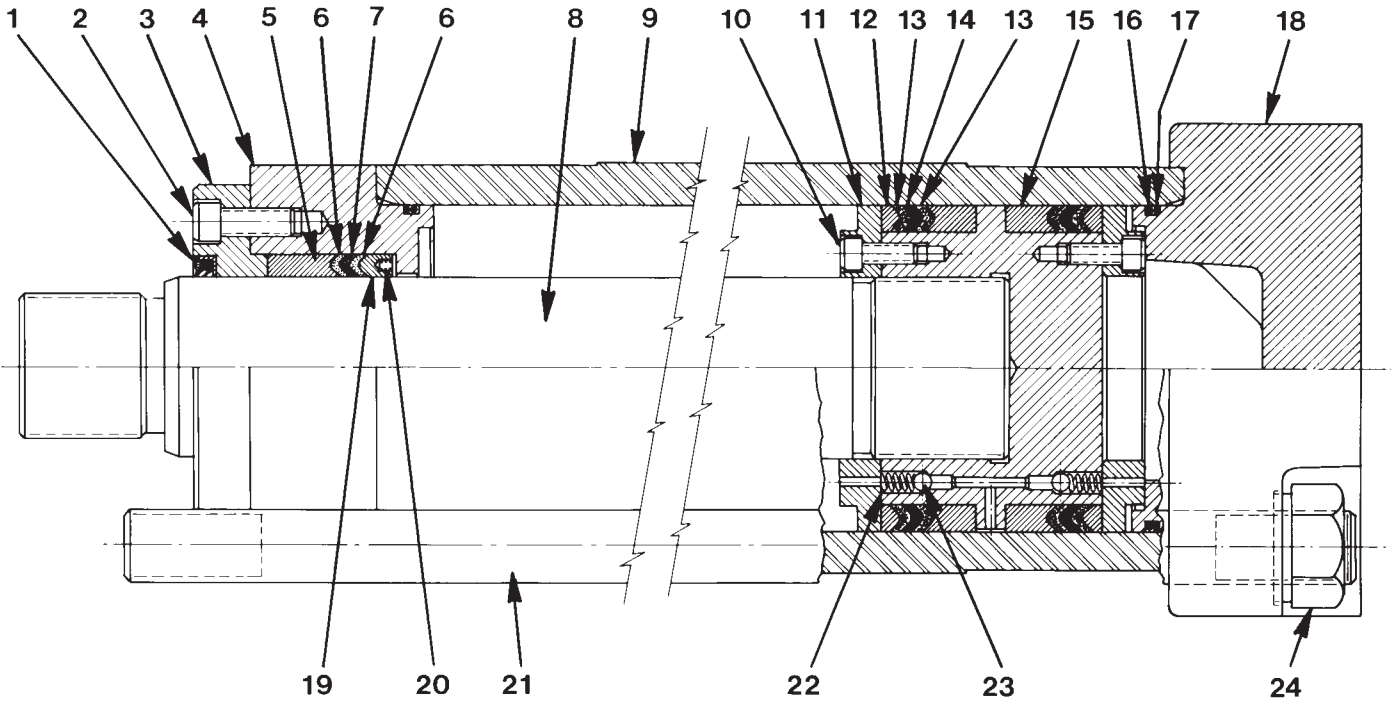
Item No.	Part No.	No. Req'd	Description
1	K142.900	1	Pump Assembly
2	*U30X-5	1	Pump Kit
3	A652.051-1	1	Piston
4	A649.170	1	Spring
5	A650.340	1	Pump Cap
6	W407.524	1	Ring
7	A988.900	1	Release Valve
8	*U30X-6	1	Release Kit
9	*U30X-7	1	Valve Kit
10	*U30X-8	1	Overload Kit
11	A655.055		
	7-1/8" width	1	Base
12	HJ100.004	1	Cylinder
13	AJ100.060	1	Plug
14	*AJ100.020	1	Gasket
15	K909.025	1	Reservoir
16	K1.020	1	Cap
17	*K514.041	1	Ring
18	J864.040	1	Plunger
19	*J865.041	1	Ring
20	K10.186, 2-5/64"	1	Spacer
21	K3.071	1	Disc
22	*E494.108	1	Wiper
23	*D385.041	1	Cup
24	J349.108-1	1	Washer
25	EJ100.014	1	Nut
26	18725	1	Power Unit Assembly (Includes Items 1 through 25)

* Item numbers marked with an asterisk (*) are contained in Repair Kit No. 19447.

NOTE: Item 26 and repair kit can be ordered from Power Team.

All parts not included in the repair kit are to be purchased from your Power Team authorized hydraulic service center.

DOUBLE ACTING CYLINDER ASSEMBLY
Capacity: 103.15 Tons At 10,000 PSI Maximum (Push)
67.8 Tons At 10,000 PIS Maximum (Pull)



TORQUE IN 190 FT.—LBS.
INCREMENTS TO 950 FT.—LBS.
IN SEQUENCE SHOWN.

Item No.	Part No.	No. Req'd	Description
1	10907	1	Wiper Ring
2	10885	6	Soc. Hd. Cap Screw (3/8-16 x 1-1/4 Lg.)
3	30621	1	Packing Support Plate
4	40168	1	Cylinder End Cap
5	21408	1	Female Adapter
6	10338	2	V-ring
7	10523	1	V-ring
8	30679	1	Piston Rod & Head Assembly
9	30622-15 1/2	1	Cylinder
10	10506	12	Soc. Hd. Cap Screw (5/16-18 x 7/8 Lg.)
11	21407	2	Packing Support Plate
12	10888	2	Male Adapter
13	10339	4	V-ring
14	12596	2	V-ring
15	21410	2	Female Adapter
16	10886	2	O-ring
17	19174	2	Backup Washer
18	42970	1	Cylinder Base Cap
19	21406	1	Male Adapter
20	10359	6	Compression Spring
21	21497	4	Tie Rod
22	11024	2	Compression Spring (1/4 O.D. x 5/8 Lg.)
23	10375	2	Steel Ball (1/4 Dia.)
24	21411	4	Special Tie Rod Nut
25	10479	1	Pipe Plug (1/4 NPTF)

PARTS INCLUDED BUT NOT SHOWN

37782 1 Warning Decal

Refer to any operating instructions included with this product for detailed information about operation, testing, disassembly, reassembly, and preventive maintenance.

Items found in this parts list have been carefully tested and selected. **Therefore: Use only genuine replacement parts!**

Additional questions can be directed to our Technical Services Department.