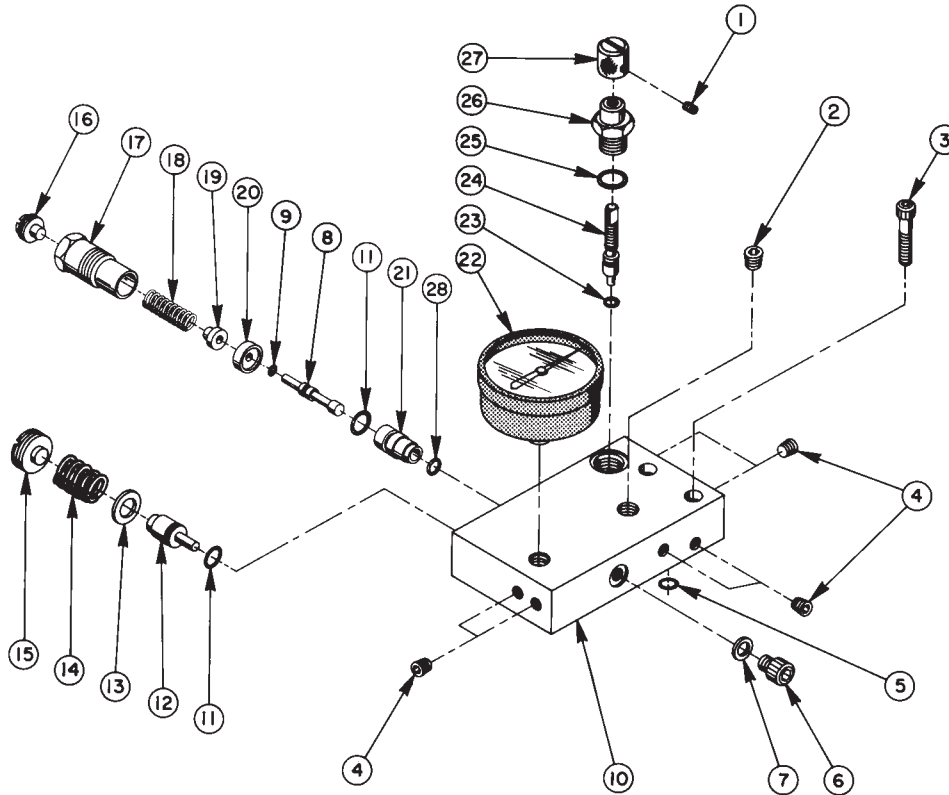


DUAL PRESSURE GAUGE CONVERSION KIT



Item No.	Part No.	No. Req'd	Description	Item No.	Part No.	No. Req'd	Description
1	10132	1	Set Screw (8-32 UNC X 1/4 Lg.)	15	200020	1	Plug
2	10479	1	Pipe Plug (1/4 NPTF)	16	27850	1	Adjusting Screw
3	10020	2	Soc. Hd. Cap Screw (1/4-20 UNC X 1-1/4 Lg.)	17	33414	1	Spring Retainer
4	11084	6	Pipe Plug (1/16 NPTF)	18	13165	1	Compression Spring (3/8 O.D. X 1 1/2 Lg.)
5	*10266	1	O-ring (3/8 X 1/4 X 1/16, -010)	19	27805	1	Spring Button
6	25683	1	Special Cap Screw	20	27806	1	Guide Collar
7	*11031	1	Copper Washer (15/32 X 5/16 X 1/32)	21	27783	1	Guide
8	27786	1	Spool (Refer to Form #102461 for proper installation)	22	17966	1	Liquid Filled Gauge - 0-600 PSI
9	*10264	1	O-ring (1/4 X 1/8 X 1/16, -006)	23	*10265	1	O-ring (5/16 X 3/16 X 1/16, -008)
10	50445	1	Dual Gauge Block	24	200686	1	Stem
11	*10268	2	O-ring (1/2 X 3/8 X 1/16, -012)	25	*10300	1	O-ring (5/8 X 15/32 X 5/64, -906)
12	200021	1	Plunger (Refer to Form #102461 for proper installation)	26	33415	1	Guide
13	14968	1	Washer (25/64 X 3/4 X 1/16)	27	200685	1	Knob
14	14979	1	Compression Spring (3/4 O.D. X 1" Lg.)	28	*12522	1	O-ring (3/8 X 1/4 X 1/16, -010)

Part Numbers marked with an asterisk (*) are included in
Repair Kit No. 300310.

CONVERSION STEPS

1. Loosen the two soc. hd. cap screws (#10020) on top of the gauge block (#46707) of your tester.
2. Remove this block carefully to avoid disturbing the o-ring (#10266) seated in the upper body. Check o-ring and replace if necessary.
3. Unthread the gauge from this block.
4. Remove the pipe plug (#10479) from the dual gauge block (#50445) and thread the gauge that was just removed into this hole.
5. Using the same cap screws, fasten the dual gauge block into the same threaded holes on the tester upper body.