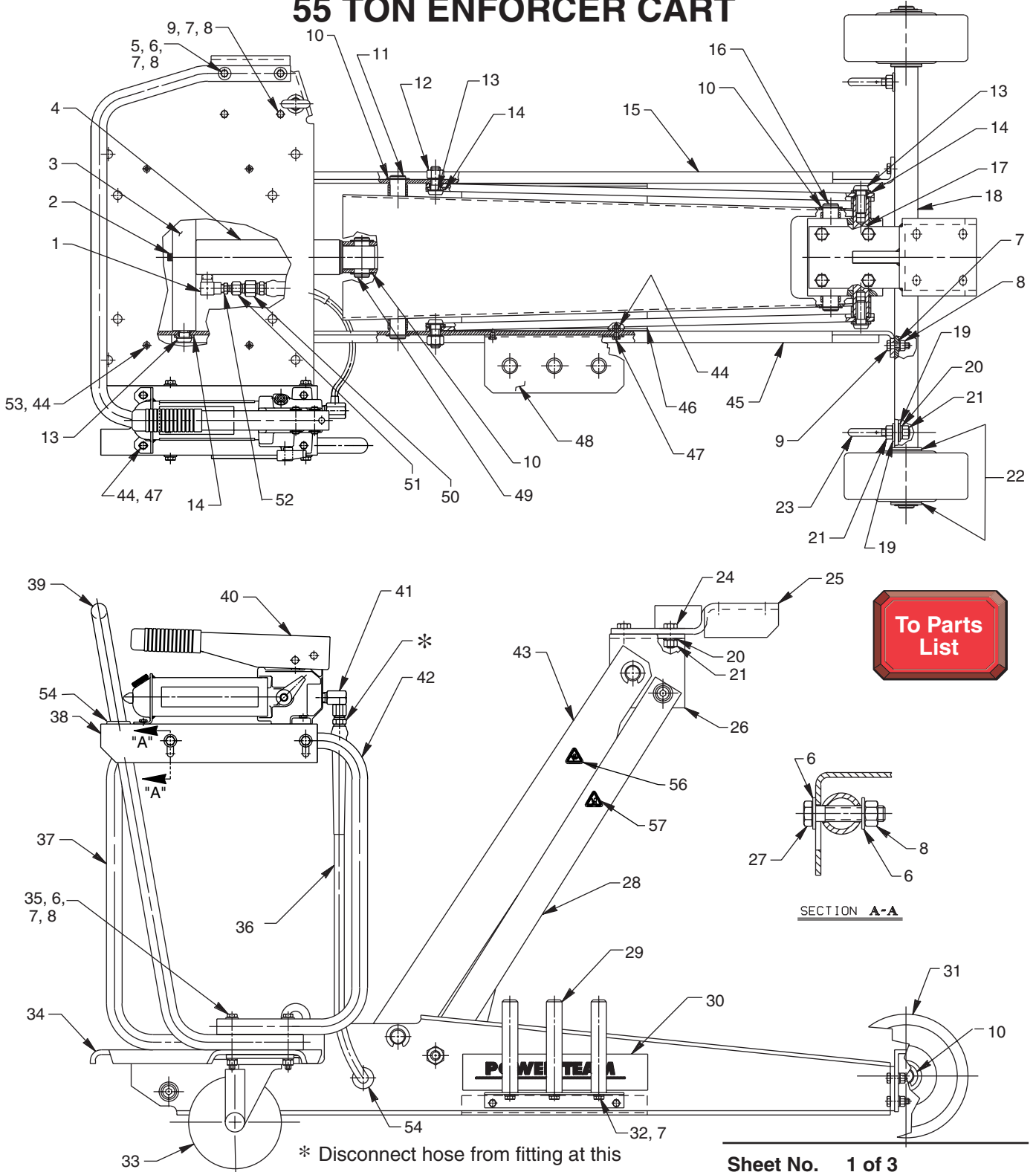


## 55 TON ENFORCER CART



\* Disconnect hose from fitting at this point. Connect hose to power pump and cycle unit until air is bled out of system. Reconnect hose to fitting.

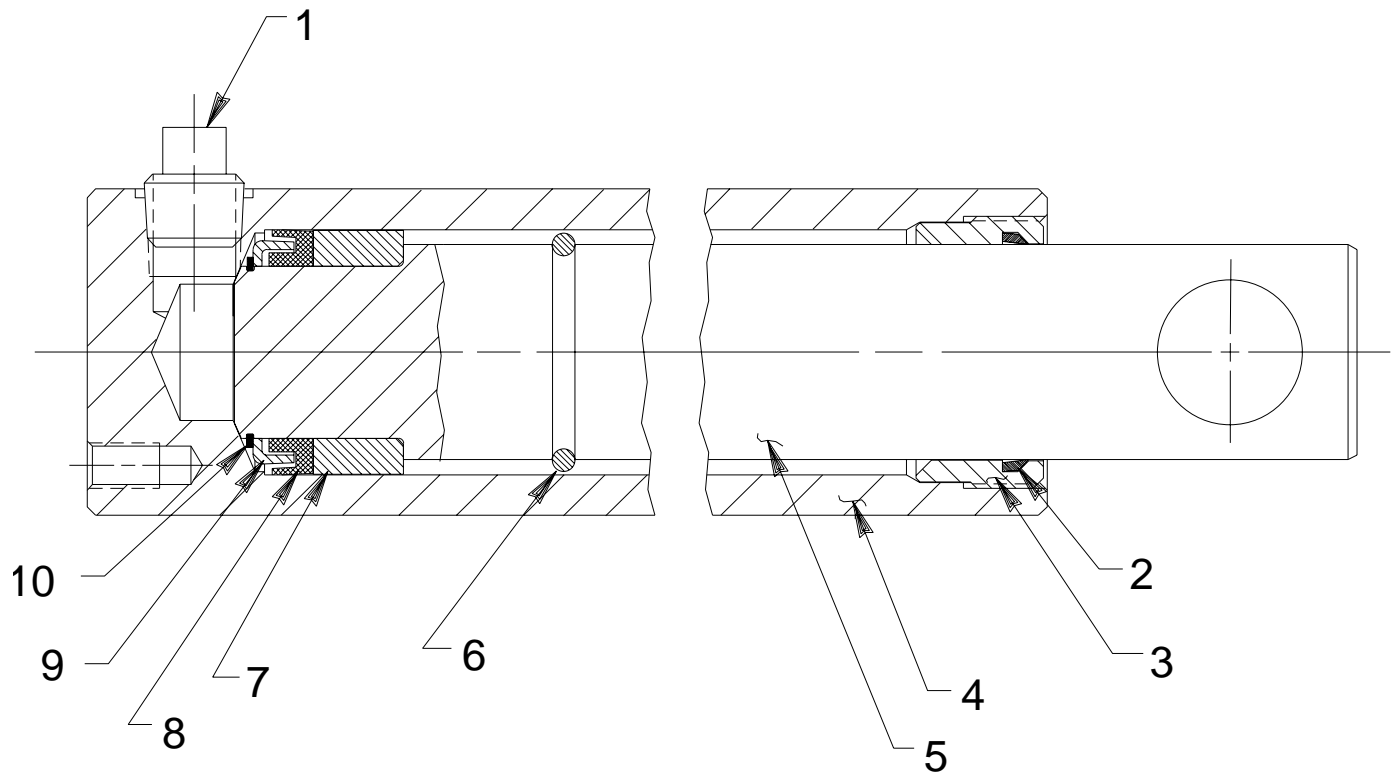
# Parts List, Form No. 101319, Back sheet 1 of 3

Item No.	Part No.	No. Req'd	Description
1	10474	1	90° Elbow Fitting
2	18328	2	Cap Screw (5/16-18 x 2" Lg.)
3	420561	1	Ram Mounting Plate
4	420576	1	Cylinder Assembly (Model A for all units built before 8-1-95; Model B for all units built after 8-1-95; See sheet 2 of 3)
5	21498	4	Special Hex Hd. Cap Screw
6	10258	14	Plain Washer
7	10247	15	Washer
8	10204	16	Hex Nut (3/8-16 UNC)
9	10049	6	Hex Hd. Cap Screw (3/8-16 UNC x 1" Lg.)
10	11903	8	Retaining Ring
11	350587	1	Pivot Pin (Grease before assembling)
12	15316	2	Cap Nut
13	251018	6	Cap Screw (5/8-11 UNC x 1-1/2 Lg.)
14	251009	6	Guide (Grease before assembling)
15	64348	1	Side Plate
16	350586	1	Lift Saddle Pivot Pin (Grease before assembling)
17	251007	1	Saddle Pin (Grease before assembling)
18	420565	1	Front Wheel Support Weldment
19	205643	8	Wrought Washer
20	10249	8	Lockwasher (For 1/2 bolt)
21	10208	12	Hex Nut (1/2-13 UNC)
22	11253	4	Washer (Place two washers on each side of wheel. Two are included with wheel.)
23	251017	4	Turned Eye Bolt
24	10080	4	Cap Screw (1/2-13 UNC x 1-1/4 Lg.)
25	420573	1	Mounting Bracket
26	251011	1	Lift Saddle Bracket Weldment
27	251020	4	Hex Hd. Cap Screw (3/8-16 UNC x 1-3/4 Lg.)
28	350590	2	Lift Leveler Bar
29	251112	3	Pin
30	350678	2	Trade Name Decal
31	10468	2	Wheel (12" X 3"; Grease zerk side of wheel to face outside of cart.)
32	10046	3	Screw (3/8-16 UNC x 3/4 Lg.)
33	17785	2	Swivel Caster
34	64351	1	Rear Caster / Pump Mounting Plate
35	10060	2	Hex Hd. Cap Screw (3/8-16 UNC x 3" Lg.)
36	39913	1	Hydraulic Hose Assembly
37	420572	1	Hand Pump Stand
38	420570	1	Hand Pump Mounting Bracket
39	420571	1	Handle Bar
40	64380	1	Hydraulic Hand Pump Assembly (See back sheet 2 of 3)
41	10470	1	Union Adapter
42	420569	1	Hand Pump Stand
43	420562	1	Lift Arm Weldment
44	12809	12	Locking Nut
45	64349	1	Side Plate
46	420560	1	Side Plate Brace
47	10009	8	Cap Screw (1/4-20 UNC x 3/4 Lg.)
48	420630OR9	1	Mounting Bracket
49	251008	1	Load Pin (Grease before assembling)
50	13888	1	Fitting
51	15235	1	Connector
52	251019	1	Special Orifice Fitting
53	250383	4	Cap Screw (1/4-20 UNC x 3/4 Lg.)
54	251118	2	Grommet
55	251160	1	Warning Decal
56	251057	2	Warning Decal
57	253583	2	Foot Crush Pictogram Decal

Note: Shaded areas reflect last revision(s) made to this form.



## CYLINDER ASSEMBLY



Item No.	Part No.	No. Req'd	Description
1	11127	1	Pressure Plug
2	*†201429	1	Rod Wiper
3	201366	1	Retainer Nut (Before 8-1-95; Torque to 90/100 in. lbs.)
	351051	1	Retainer Nut (After 8-1-95; Torque to 90/100 in. lbs.)
4	420575	1	Cylinder Body
5	420574	1	Piston Rod (Before 8-1-95)
	421128	1	Piston Rod (After 8-1-95)
6	201433	1	Retaining Ring
7	201364	1	Piston Head (Assemble with groove toward shoulder)
8	*16067	1	U-cup
	†205704	1	U-cup
9	201359	1	Slip Retainer
10	16076	1	Retaining Ring

## PARTS INCLUDED BUT NOT SHOWN

†19526	1	O-ring (1" x 3/4 x 1/8; for coupler)
†205724	1	Decal (Viton)
†206554	1	U-cup Backup Washer (Teflon)

Part numbers marked with an asterisk (\*) are contained in Standard Repair Kit No. 300116.

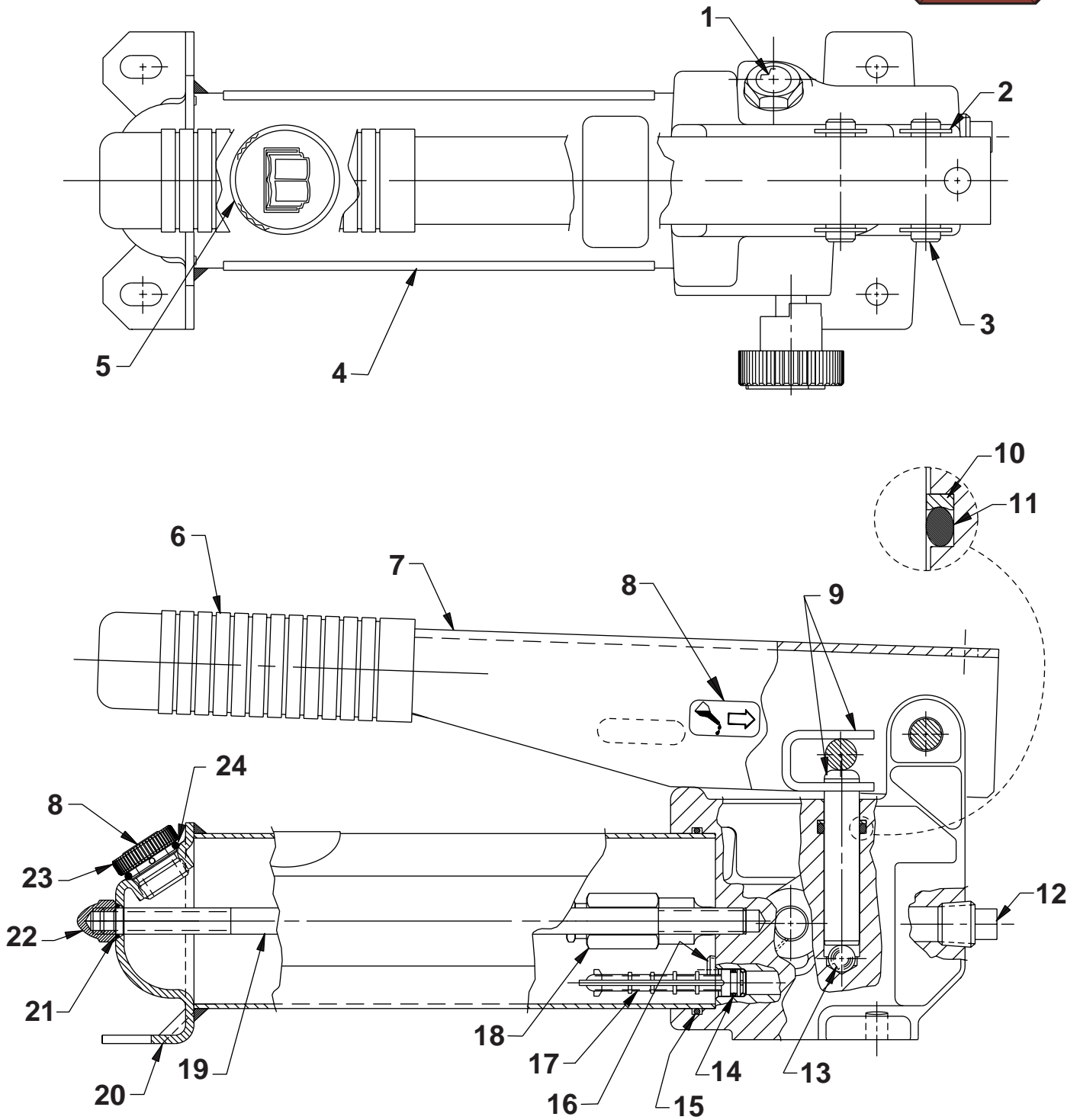
Part numbers marked with a dagger (†) are contained in Viton Seal Kit No. 300211.

Sheet No. 2 of 3

Rev. 3 Date: 9 Mar. 2000

# HAND PUMP ASSEMBLY

To Parts List



Item No.	Part No.	No. Req'd	Description
1	*251907	1	Decal, Instructions
2	211743	4	Ring, Retain EXT (0.41 x .050; Note: Expand the retainer ring to .440 dia. max. during installation.)
3	211742	2	Pin, Dowel (.44 x 1.36)
4	202173	2	Decal, Tradename (Power Team)
5	253584	1	Decal, Read Inst. (Pictorial)
6	211769	1	Grip, Handle
7	46953OR9	1	Handle
8	253234	2	Decal (Oil Pivot Pins)
9	211468	1	Piston
10	*213987	1	Washer, Backup (.69 x .50; Assemble with concave surface towards o-ring.)
11	*10271	1	O-ring (.68 x .50 Nitrile)
12	11127	1	Fitting, Plug (3/8 NPTF)
13	*10378	1	Ball (3/8" Dia.; Steel)
14	*12557	1	O-ring (.34 x .21; Nitrile)
15	*211495	1	O-ring (2.68 x 2.50; Nitrile)
16	10427	1	Fitting, Plug (1/8 NPTF)
17	*215075	1	Screen, Filter
18	21278-30	1	Valve, Relief (Set at 3,000/3,400 PSI; Apply Loctite 592 [PT #905516] or equiv. & torque to 150/170 in. lbs.)
19	252326	1	Rod, Tie
20	421394	1	Reservoir
21	13943	1	O-ring (.50 x .37; Urethane)
22	10842	1	Nut, Hex Cap (3/8-16; Torque to 90/110 in. lbs.; Fully engage acorn nut onto tie rod before torquing to body.)
23	351245	1	Cap, Filler
24	10274	1	O-ring (.87 x .68; Nitrile)

Part numbers marked with an asterisk (\*) are contained in Repair Kit No. 300943.

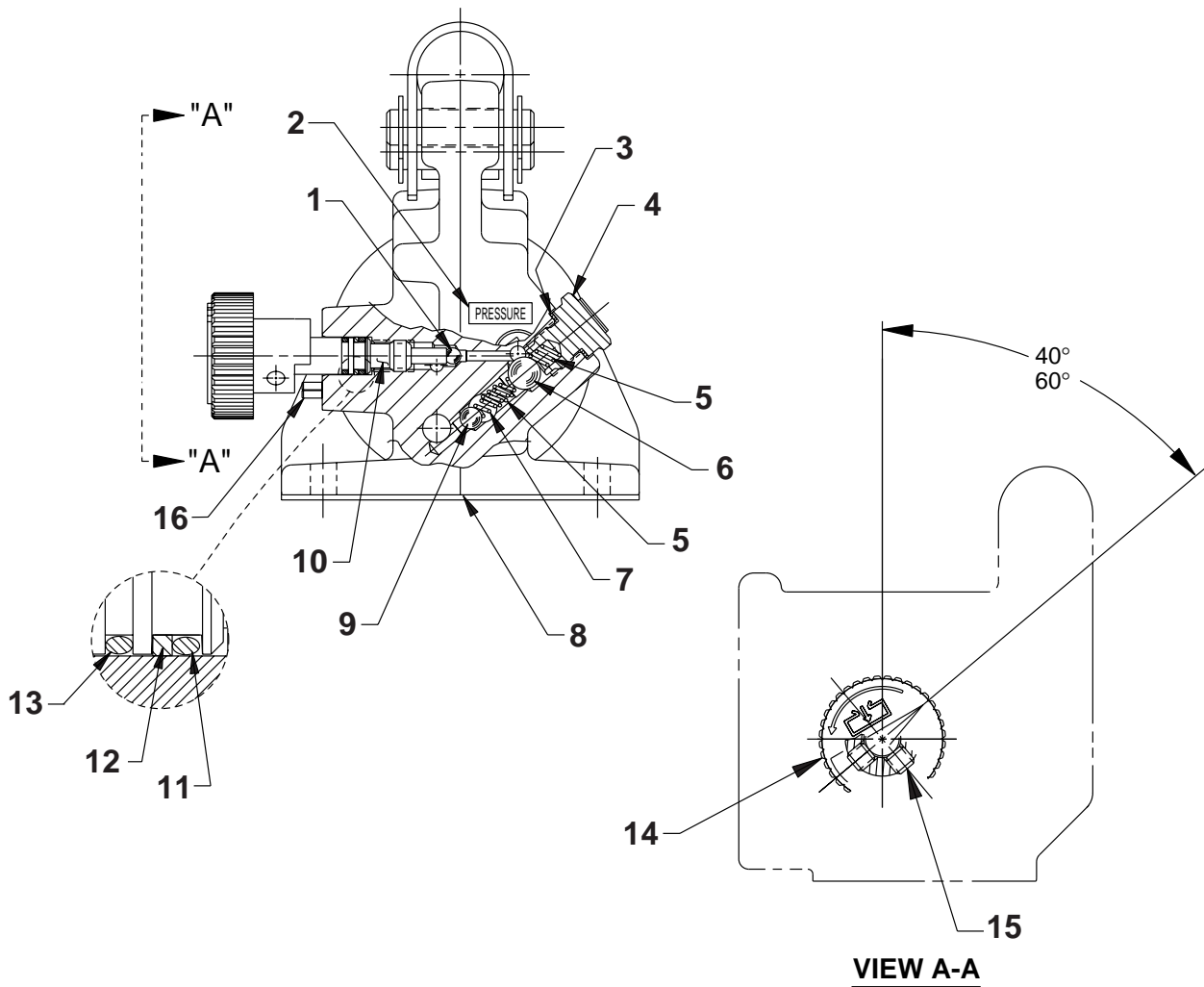


Refer to any operating instructions included with this product for detailed information about operation, testing, disassembly, reassembly, and preventive maintenance.

Items found in this parts list have been carefully tested and selected. **Therefore: Use only genuine Power Team replacement parts!**

Additional questions can be directed to our Technical Services Department.

### END VIEW & SECTION A-A



Item No.	Part No.	No. Req'd	Description
1	12223	1	Ball (3/16 Dia.)
2	215301	1	Pressure Decal
3	*14874	1	Soft Copper Washer (.700 X 1/2 X 1/32)
4	351952	1	Valve Screw (Torque to 350/370 in. lbs.)
5	*10444	1	Compression Spring (3/16 I.D. X 13/32 Lg.)
6	*10378	1	Steel Ball (3/8 dia.)
7	*211797	1	Spring (5/32 O.D. X 5/8 Lg.)
8	64378	1	Pump Body
9	*10375	1	Steel Ball (1/4 dia.)
10	350185	1	Release Valve Screw

Item No.	Part No.	No. Req'd	Description
11	*10267	1	O-ring (7/16 X 5/16 X 1/16)
12	*15085	1	Backup Washer (7/16 X 5/16 X 3/64 Thk.)
13	14763	1	O-ring (.43 x .31; Urethane)
14	351087	1	Release Valve Knob  (Note: Screw in valve stem until seated [bottomed out]. Then position knob as shown approx. 1/16" from casting surface. Lock in place with set screw.)
15	10556	2	Soc. Set Screw (1/4-20 UNC X 1/4 Lg.; Torque to 50/70 in. lbs.)
16	10714	1	Slotted Spring Pin (.19 x .63)

Part numbers marked with an asterisk (\*) are contained in Repair Kit No. 300943.