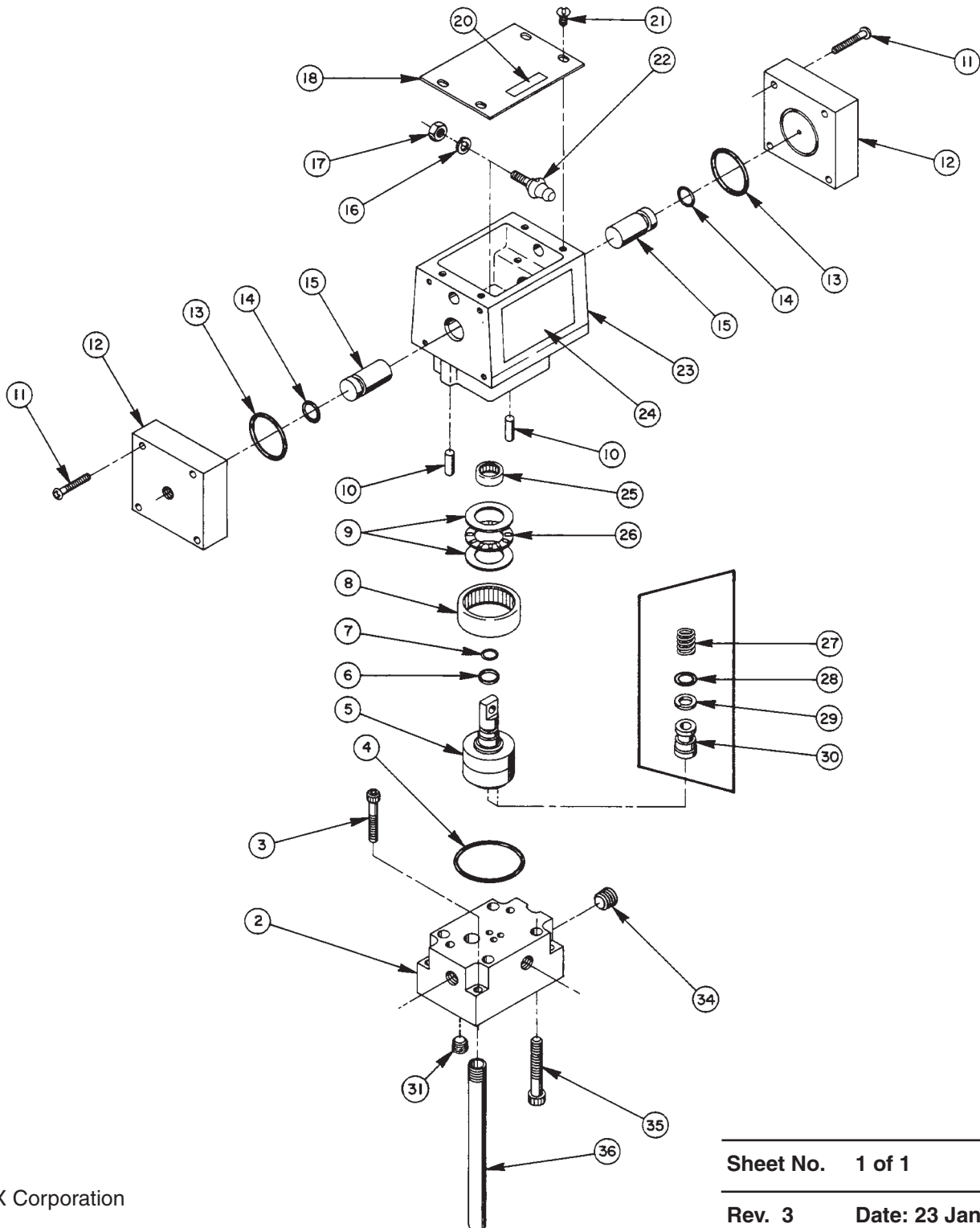


2 POSITION, 4-WAY -- PUMP MOUNTED -- AIR OPERATED VALVE ASSEMBLY



Parts List, Form No. 100542, Back sheet 1 of 1

Item No.	Part No.	No. Req'd	Description
2	61078	1	Subplate
3	10022	4	Soc. Hd. Mach. Screw (1/4-20 UNC X 1-1/2 Lg.)
4	*214699	1	O-ring (2-3/16 X 2" X 3/32; Disogrin)
	19017	1	O-ring (2-3/16 X 2" X 3/32; Viton)
	251400	1	O-ring (2-3/16 X 2" X 3/32; EPR)
5	52064	1	Rotor
6	*208672	1	Glyd Ring
7	*10268	1	O-ring (1/2 X 3/8 X 1/16; Nitrile)
	11439	1	O-ring (1/2 X 3/8 X 1/16; Viton)
	17716	1	O-ring (1/2 X 3/8 X 1/16; EPR)
8	17505	1	Needle Roller Bearing
9	15935	2	Thrust Washer
10	17567	2	Spring Pin
11	13025	8	Machine Screw (#8-32 UNC X 1 1/4 Lg.; Torque to 10/15 in. lbs.)
12	45209	2	Air Cap
13	*14852	2	O-ring (1-9/16 X 1-3/8 X 3/32)
14	*210230	2	O-ring (11/16 X 1/2 X 3/32)
15	208673	2	Cam Plunger
16	10245	1	Lockwasher
17	15504	1	Locknut
18	303976	1	Cover
20	209383	1	Patent Decal
21	10164	4	Machine Screw (#10-24 UNC X 3/8 Lg.)
22	304030	1	Lever
23	61077	1	Valve Body
24	208715	1	Part No. Decal
25	208671	1	Needle Roller Bearing
26	12188	1	Roller Bearing
27	15095	2	Compression Spring (1/4 O.D. X 15/32 Lg.)
28	*10265	2	O-ring (5/16 X 3/16 X 1/16; Nitrile)
	11437	2	O-ring (5/16 X 3/16 X 1/16; Viton)
	17714	2	O-ring (5/16 X 3/16 X 1/16; EPR)
29	*15174	2	Backup Washer (5/16 X 3/16 X 3/64; Nitrile)
30	303935	2	Shear Seal
31	15499	1	Pipe Plug (1/8 NPTF)
34	10479	1	Pipe Plug (1/4 NPTF)
35	18328	4	Soc. Hd. Cap Screw (5/16-18 X 2" Lg.; Torque to 150/200 in. lbs.)
36	200609	1	Drain Tube

PARTS INCLUDED BUT NOT SHOWN

9689	1	Straight Fitting
16797	1	90° Elbow Fitting

Part numbers marked with an (*) asterisk are contained in Repair Kit No. 300332.
 Note: Alternate material seals listed for special valves factory equipped with viton or EPR seals.

NOTE: To convert this Model A valve to a Model B, order Conversion Kit No. 301023.

Refer to any operating instructions included with this product for detailed information about operation, testing, disassembly, reassembly, and preventive maintenance.

Items found in this parts list have been carefully tested and selected. Therefore: **Use only genuine Power Team replacement parts!**

Additional questions can be directed to our Technical Services Department.

Note: Shaded areas reflect last revision(s) made to this form.