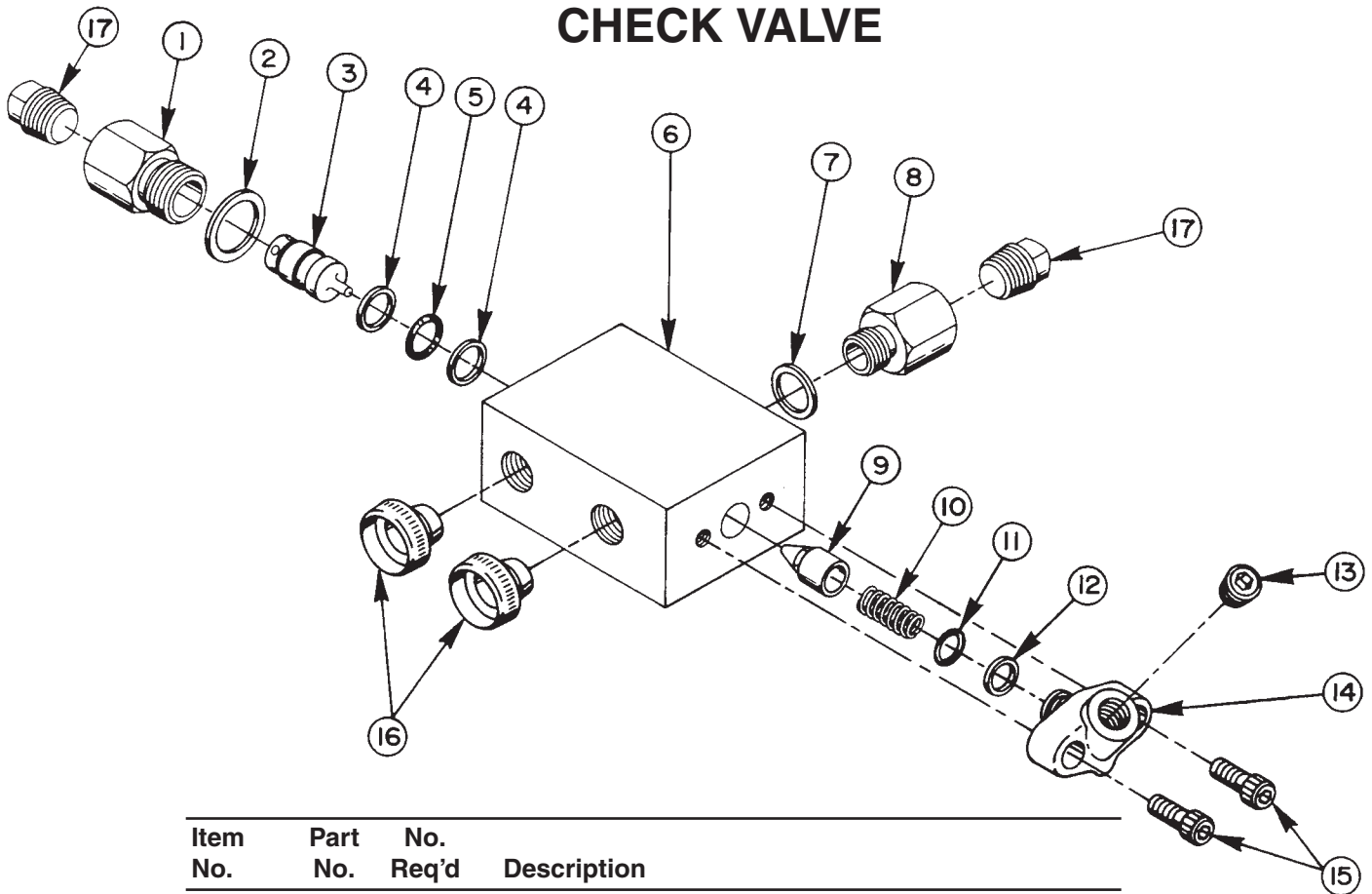


PILOT OPERATED CHECK VALVE



| Item No. | Part No. | No. Req'd | Description |
|----------|----------|-----------|--|
| 1 | 205956 | 1 | Straight Fitting |
| 2 | *10263 | 1 | Copper Washer |
| 3 | 21864 | 1 | Valve Piston |
| 4 | *12390 | 2 | Backup Washer (5/8 x 1/2 x 1/16, -014) |
| 5 | *10301 | 1 | O-ring (5/8 x 1/2 x 1/16 CS, -014) |
| 6 | 30859 | 1 | Valve Body |
| 7 | *10261 | 1 | Soft Copper Washer |
| 8 | 205955 | 1 | Straight Fitting |
| 9 | 20771 | 1 | Poppet |
| 10 | 10425 | 1 | Spring |
| 11 | *10268 | 1 | O-ring (1/2 x 3/8 x 1/16, -012) |
| 12 | *11863 | 1 | Backup Washer (Teflon -012) |
| 13 | 10479 | 1 | Pipe Plug (1/4 NPTF) |
| 14 | 20866 | 1 | Gauge Fitting |
| 15 | 10006 | 2 | Soc. Hd. Cap Screw (1/4-20 x 5/8 Lg.) |
| 16 | 11036 | 2 | Aluminum Cap |
| 17 | 11127 | 2 | Plug |

Part numbers marked with an asterisk (*) are contained in Repair Kit No. 27345.

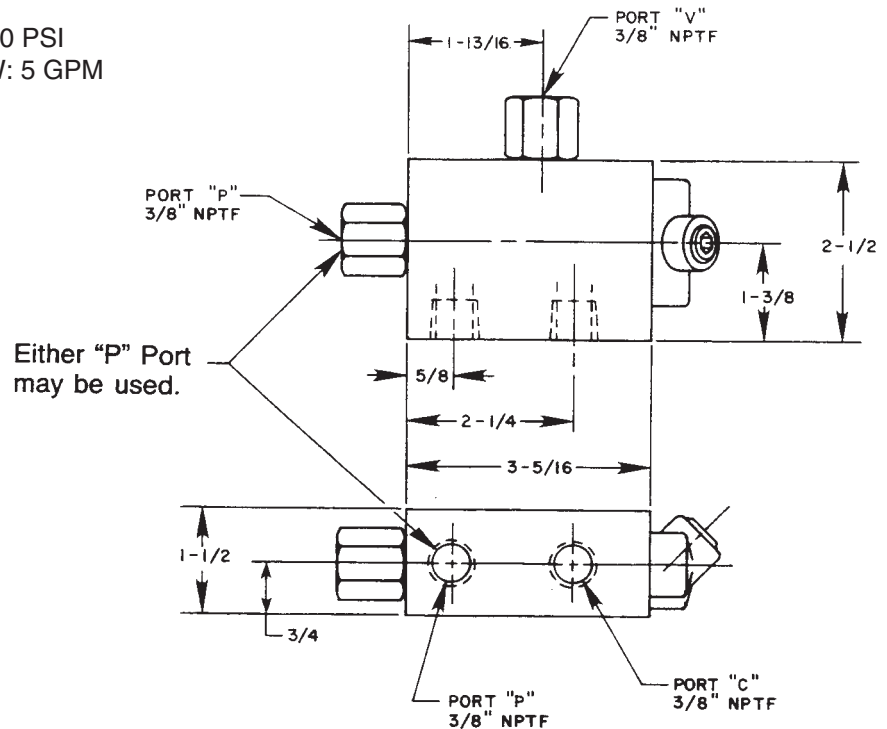
Sheet No. 1 of 1

Rev. 1 Date: 12 Mar 2003

SPECIFICATIONS

This valve is intended for use with double-acting cylinders in circuits employing 3-position, 4-way tandem or open center valves without posi-check. Leakage normally associated with this type of valve when in the neutral position is eliminated . . . allowing pressure to be maintained in the cylinder. This valve is ideal for clamping operations where leakage must be avoided in order to maintain clamping pressure . . . also adaptable to special applications using other types of 4-way valves. A pressure switch and/or gauge may be attached if required.

PORT SIZES: 3/8" NPTF
 MAXIMUM PRESSURE: 10,000 PSI
 MAX. RECOMMENDED FLOW: 5 GPM



TYPICAL HYDRAULIC CIRCUITS

Double-acting cylinder with a remote mounted, pilot operated check valve. (Holds cylinder pressure when valve lever is in neutral position.)

Double-acting cylinder with remote control valve and a remote pilot operated check valve. (Holds cylinder pressure when valve lever is in neutral position.)

