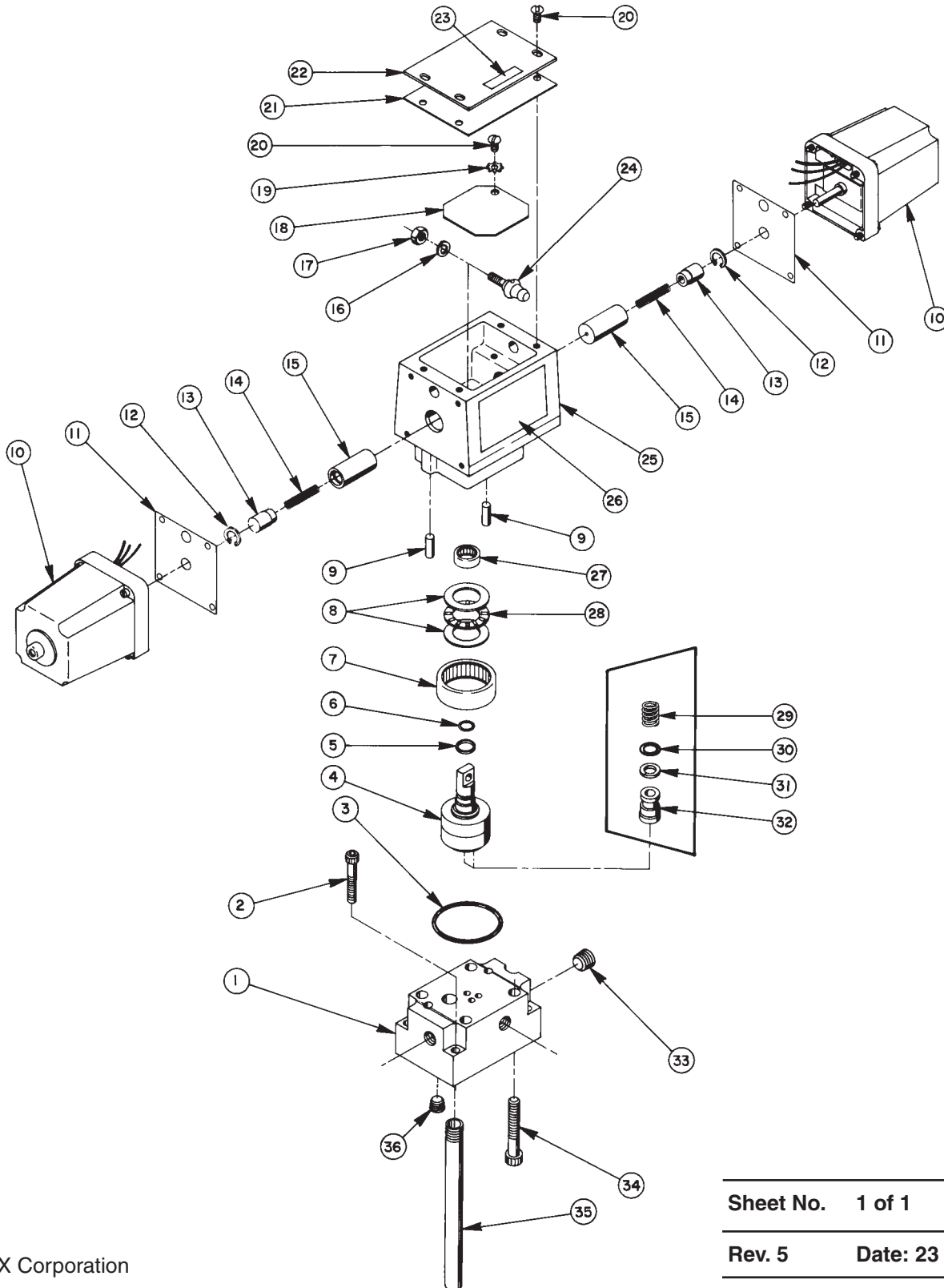


Parts List for:

9552	
9572	61084-230
9592	61084-CE
61084	61408

TWO POSITION, 4-WAY, PUMP-MOUNTED, SOLENOID-OPERATED VALVE ASSEMBLY



Parts List, Form No. 100540, Back sheet 1 of 1

Item No.	Part No.	No. Req'd	Description	Item No.	Part No.	No. Req'd	Description
1	61078	1	Subplate	19	11108	1	Lockwasher (#10 external tooth)
2	10022	4	Soc. Hd. Machine Screw (1/4-20 UNC x 1-1/2 Lg.; Note When using this valve on a PE30 Series pump order (4) 12001 Screws for mounting valve to pump.)	20	10164	5	Machine Screw (#10-24 UNC x 3/8 Lg.)
3	*11895	1	O-ring (2-3/16 x 2" x 3/32)	21	303986	1	Cover Gasket
	*214699	1	O-ring (Disogrin)	22	303976	1	Cover
	19017	1	O-ring (Viton)	23	209383	1	Patent Decal
	250400	1	O-ring (EPR)	24	304030	1	Lever
4	52064	1	Rotor	25	61077	1	Valve Body
5	*208672	1	Glyd Ring	26	208712	1	Trade Name Decal (For 9592)
6	*10268	2	O-ring (1/2 x 3/8 x 1/16; Nitrile)		212406	1	Trade Name Decal (For 9572 & 61408)
	11439	2	O-ring (1/2 x 3/8 x 1/16; Viton)	27	250147	1	Trade Name Decal (For 9552)
	17716	2	O-ring (1/2 x 3/8 x 1/16; EPR)	28	208671	1	Needle Roller Bearing
7	17505	1	Needle Roller Bearing	29	12188	1	Roller Bearing
8	15935	2	Thrust Washer		15095	2	Compression Spring (1/4 O.D. x 15/32 Lg.)
9	17567	2	Spring Pin	30	*10265	2	O-ring (5/16 x 3/16 x 1/16; Nitrile)
10	304068	2	Solenoid (115 V., 50/60 Hz.; For 9592 & 61084)		11437	2	O-ring (5/16 x 3/16 x 1/16; Viton)
	304069	2	Solenoid (230 V., 50/60 Hz.; For 9552, 61084-230 & 61084-CE)		17714	2	O-ring (5/16 x 3/16 x 1/16; EPR)
	304070	2	Solenoid (24 V., 50/60 Hz.; For 9572 & 61408)	31	*15174	2	Backup Washer (5/16 x 3/16 x 3/64)
11	303980	2	Stop Plate	32	303935	2	Shear Seal
12	11522	2	Retaining Ring (For 1/2" hole)	33	10479	1	Pipe Plug (1/4 NPTF)
13	208590	2	Spring Guide	34	18328	4	Soc. Hd. Cap Screw (5/16-18 x 2" Lg.; Torque to 150/200 in. lbs.)
14	13960	2	Compression Spring (1/4 O.D. x 1-1/2 Lg.)	35	200609	1	Drain Tube
15	303968	2	Actuator Plunger	36	15499	1	Pipe Plug (1/8 NPTF)
16	10245	1	Lockwasher (For 1/4" bolt)	PARTS INCLUDED BUT NOT SHOWN			
17	15504	1	Locknut		9689	1	Straight Fitting
18	303977	1	Inner Cover		16797	1	90° Elbow Fitting
					351404	4	Gasket (Note: For 61084-CE only. Place one gasket on each side of stop plate [Item #1]).

Part numbers marked with an asterisk (*) are contained in Repair Kit No. 300332.

NOTE: To convert this Model A valve to a Model B, order Conversion Kit No. 301023.

Note: Shaded areas reflect last revision(s) made to this form.

Refer to any operating instructions included with the product for detailed information about operation, testing, disassembly, and preventive maintenance.

Items found in this parts list have been carefully tested and selected. **Therefore: Use only genuine Power Team replacement parts!**

Additional questions can be directed to our Technical Services Department.