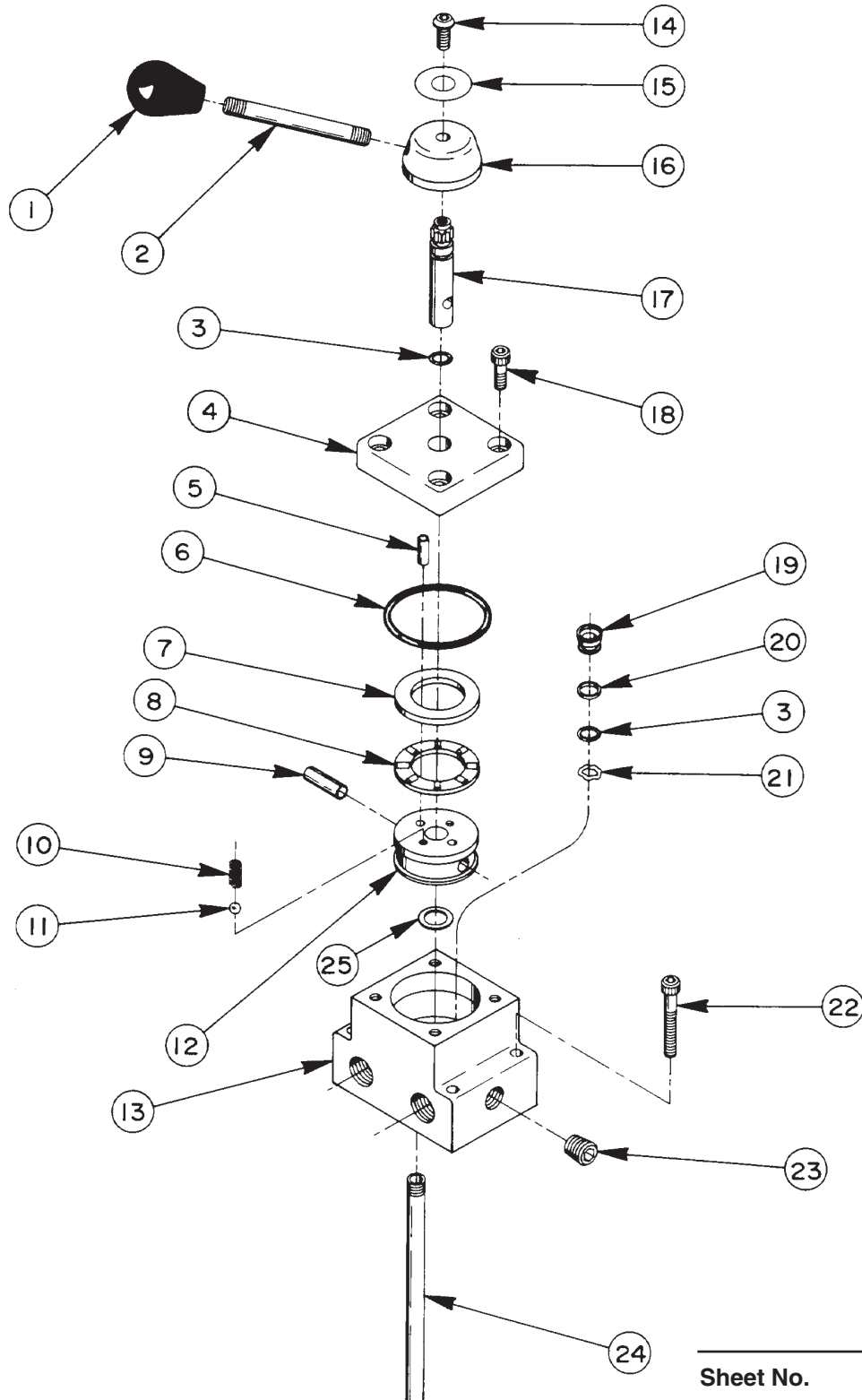


## VALVE ASSEMBLY



Item No.	Part No.	No. Req'd	Description	Item No.	Part No.	No. Req'd	Description
1	211911	1	Plastic Knob	13	61288	1	Valve Body
2	21639	1	Strud	14	15911	1	Cap Screw (1/4-20 x 5/8 Lg.; Torque to 60/80 in. lbs.)
3	*10268	4	O-ring (1/2 x 3/8 x 1/16, -012; Nitrile)	15	211936	1	Cap Screw (Torque to 60/80 in. lbs.)
	11439	4	O-ring (1/2 x 3/8 x 1/16, -012; Viton)	16	46057	1	Stem End
	17716	4	O-ring (1/2 x 3/8 x 1/16, -012; EPR)	17	46048	1	Stem
4	61343	1	End Cap	18	11013	4	Cap Screw (5/16-18 x 1" Lg.; Torque to 300/320 in. lbs.)
5	211915	1	Pin	19	202480	3	Shear Seal
6	*15892	1	O-ring (1.956 x 1.720 x .118, -924; Nitrile)	20	*11863	3	Backup Washer (1/2 x 3/8 x 1/16, -012)
	19097	1	O-ring (1.956 x 1.720 x .118, -924; Viton)	21	21975	3	Spring Washer
	212887	1	O-ring (1.956 x 1.720 x .118, -924; EPR)	22	10854	4	Cap Screw (1/4-20 UNC x 1-3/4 Lg.) Note: When using this valve on a PE30 Series pump order (4) 12001 Screws for mounting valve to pump.
7	11227-1	1	Thrust Bearing Washer	23	14972	1	Pipe Plug (1/4 NPTF)
8	11228	1	Roller Thrust Bearing	24	200609	1	Drain Tube
9	10496	1	Roll Pin	25	214801	1	Spacer
10	15691	1	Compression Spring (1/4 O.D. x 5/8 Lg.)				
11	10375	1	Ball (1/4 dia.)				
12	46060	1	Rotor				

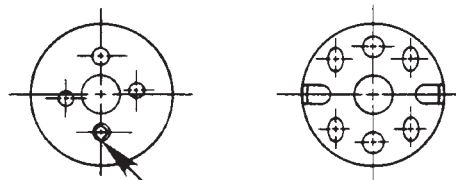
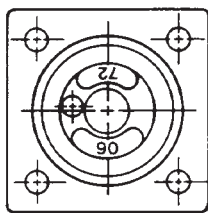
Part numbers marked with an asterisk (\*) are contained in Repair Kit No. 300451.

Note: Alternate material seals listed for special valves factory equipped with viton or EPR seals.

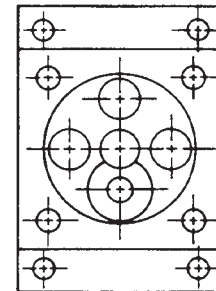
## SPECIFICATIONS

### PUMP MOUNTED, MANUAL DETENTED

#### 3-Position, 4-Way, Open Center Valve



Position opening as shown



#### FUNCTION

##### Center Position:

All ports open to tank

##### "A" Position:

Pressure to "A" Port

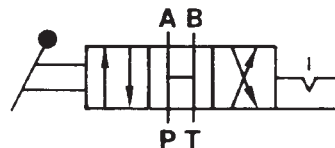
"B" Port to tank

##### "B" Position:

Pressure to "B" Port

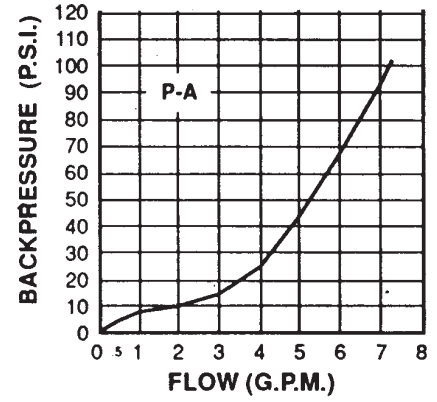
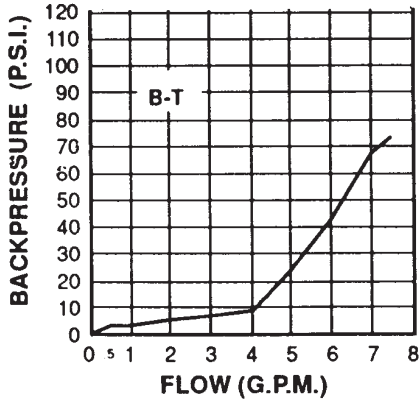
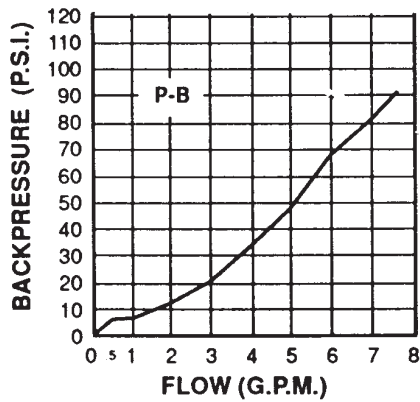
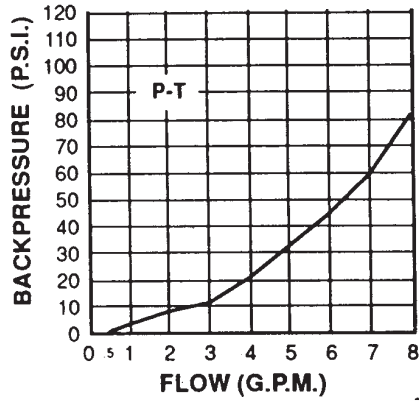
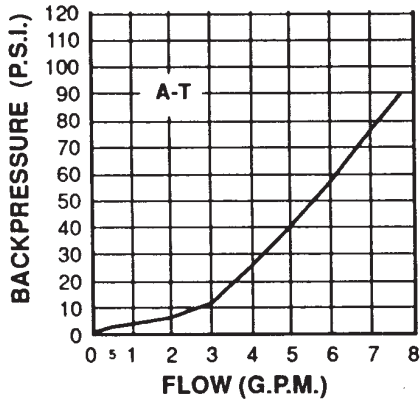
"A" Port to tank

**NOTE: All ports open to tank during transition between valve positions.**



**RATED PRESSURE: 10,000 PSI**  
**CASE PRESSURE: 500 PSI MAX.**  
**RATED FLOW: 5 GPM**

## PRESSURE DROP AND FLOW CHARTS



Refer to any operating instructions included with this product for detailed information about operation, testing, disassembly, reassembly, and preventive maintenance.

Items found in this parts list have been carefully tested and selected. **Therefore: Use only genuine Power Team replacement parts!**

Additional questions can be directed to our Technical Services Department.