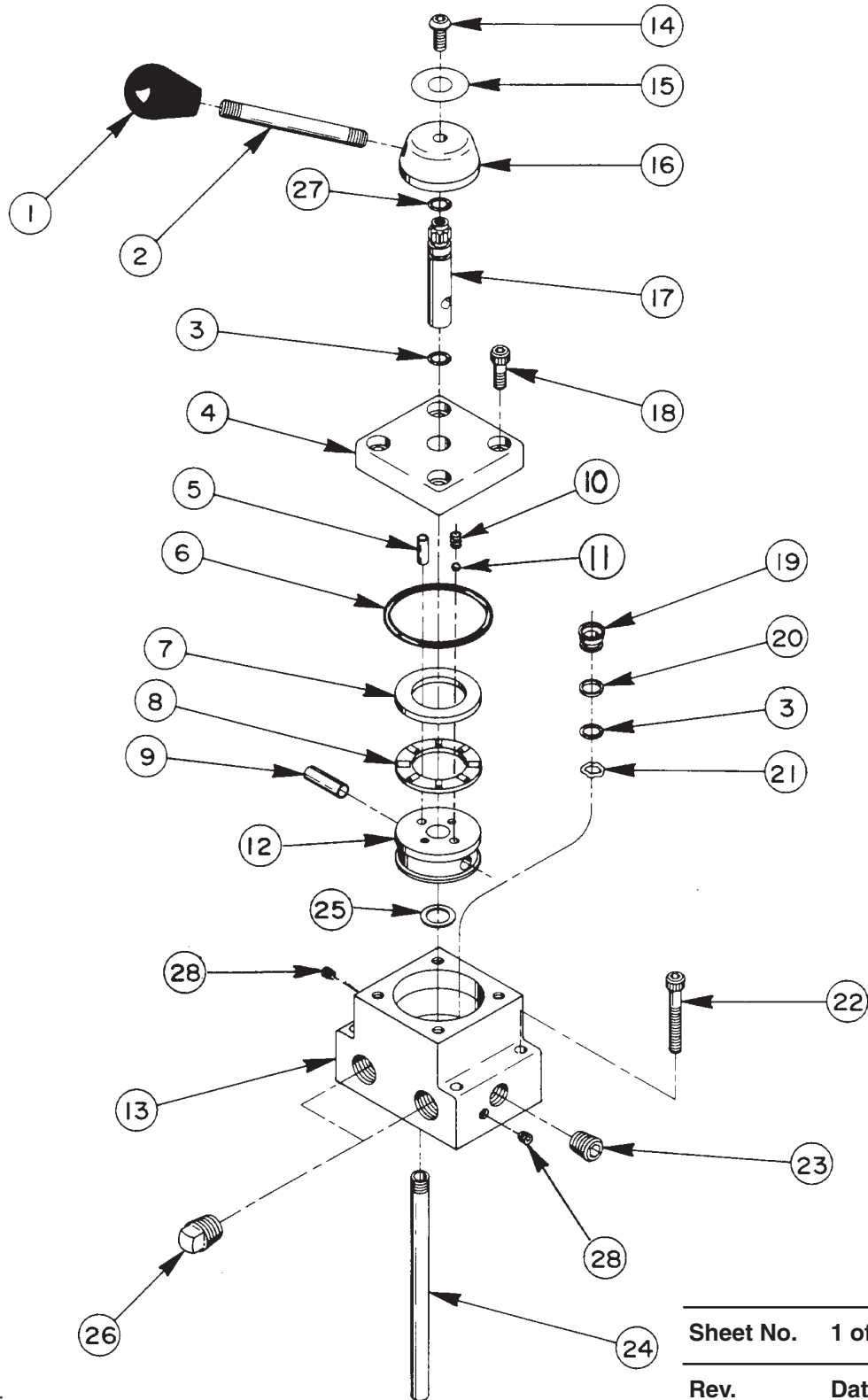


Parts List for:

9504
9504-PARK
R9504

VALVE ASSEMBLY



Parts List, Form No. 100661, Back sheet 1 of 2

Item No.	Part No.	No. Req'd	Description
1	211911	1	Plastic Knob
2	21639	1	Stud
3	*10268	4	O-ring (1/2 X 3/8 X 1/16, -012; Nitrile)
	11439	4	O-ring (1/2 X 3/8 X 1/16, -012; Viton)
	17716	4	O-ring (1/2 X 3/8 X 1/16, -012; EPR)
4	61343	1	End Cap
5	211915	1	Pin
	250056	1	Pin (After 6-1-91)
6	*15892	1	O-ring (1.956 X 1.720 X .118, -924; Nitrile)
	19097	1	O-ring (1.956 X 1.720 X .118, -924; Viton)
	212887	1	O-ring (1.956 X 1.720 X .118, -924; EPR)
7	11227-1	1	Thrust Bearing Washer
8	11228	1	Roller Thrust Bearing
9	10496	1	Roll Pin (5/16 Dia. X 1" Lg.)
10	15691	1	Compression Spring (1/4 O.D. X 5/8 Lg.)
11	10375	1	Steel Ball (1/4 dia.)
12	46060	1	Rotor
13	61459	1	Valve Body
14	15911	1	Cap Screw (1/4-20 X 5/8 Lg.; Torque to 60/80 in. lbs.)
15	211936	1	Decal
16	46057	1	End Stem
17	46048	1	Stem
18	11013	4	Cap Screw (5/16-18 X 1" Lg.; Torque to 300/320 in. lbs.)
19	202480	3	Shear Seal
20	*11863	3	Backup Washer (1/2 X 3/8 X 1/16, -012)
21	21975	3	Spring Washer (.490 X .345 X .080 thk.)
22	10854	4	Cap Screw (1/4-20 UNC X 1-3/4" Lg.) Note: When using this valve on a PE30 Series pump order (4) 12001 Screws for mounting valve to pump.
23	14972	1	Pipe Plug (1/4 NPTF)
24	200609	1	Drain Tube
25	214801	1	Spacer
26	11127	2	Pipe Plug (3/8 NPTF)
27	*213674	1	Shaft Seal (After 6-1-91)
28	15130	2	Pipe Plug (1/16 NPTF)

Part numbers marked with an asterisk (*) are contained in Repair Kit No. 300451.

Note: Alternate material seals listed for special valves factory equipped with viton or EPR Seals.

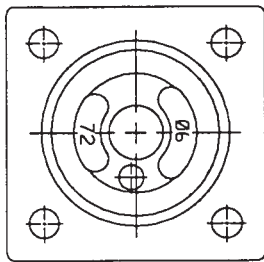
Refer to any operating instructions included with this product for detailed information about operation, testing, disassembly, reassembly, and preventive maintenance.

Items found in this parts list have been carefully tested and selected. **Therefore: Use only genuine replacement parts!**

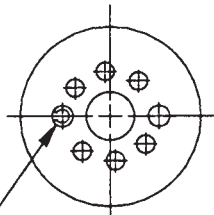
Additional questions can be directed to our Technical Services Department.

Note: Shaded areas reflect last revision(s) made to this form.

SPECIFICATIONS PUMP MOUNTED, MANUAL 2-Position, 4-Way Valve

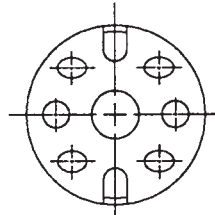


END CAP
BOTTOM VIEW

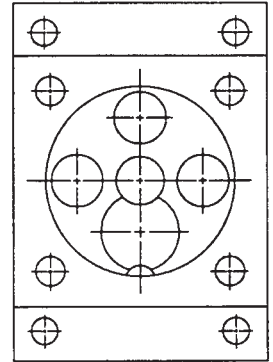


ROTOR
TOP VIEW

ROLL PIN LOCATION
(POSITION OPENING AS SHOWN)



ROTOR
BOTTOM VIEW



VALVE BODY
TOP VIEW

FUNCTION

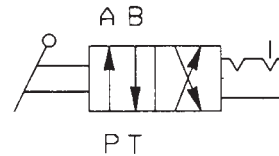
"A" Position:

Pressure to "A" Port
"B" Port to tank

"B" Position:

Pressure to "B" Port
"A" Port to tank

NOTE: All ports open to tank during transition between valve positions.



RATED PRESSURE: 10,000 PSI
CASE PRESSURE: 500 PSI MAX.
RATED FLOW: 5 GPM

PRESSURE DROP AND FLOW CHARTS

