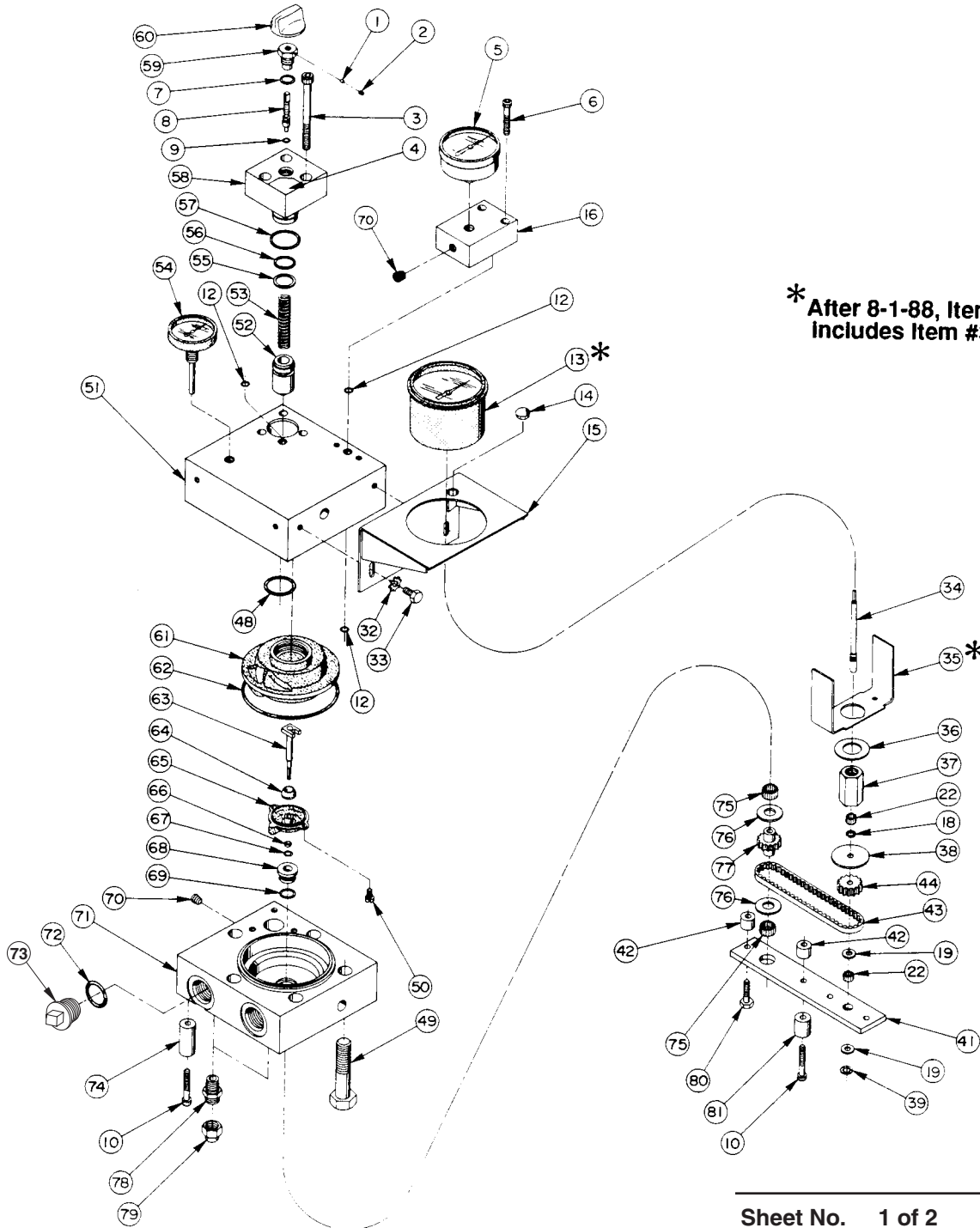


Parts List for:

4235  
HT50A

# 50 GPM HYDRAULIC TESTER

## Basic Assembly



# Parts List, Form No. 100669, Back sheet 1 of 2

Item No.	Part No.	No. Req'd	Description	Item No.	Part No.	No. Req'd	Description
1	24463	1	Nylon Insert	53	*10367	1	Compression Spring (1/2 O.D. X 2" Lg.)
2	10587	1	Set Screw (8-32 UNC X 3/16 Lg.)	54	11490	1	Temperature Gauge
3	11030	3	Cap Screw (5/16-18 UNC X 3-1/2 Lg.)	55	*14489	1	Backup Washer (15/16 X 3/4 X .048)
4	*12656	1	Decal	56	*10275	1	O-ring (15/16 X 3/4 X 3/32)
5	17967	1	Pressure Gauge	57	*12598	1	O-ring (1-15/16 X 1-1/8 X 3/32)
6	10020	2	Cap Screw (1/4-20 UNC X 1-1/4 Lg.)	58	32439	1	Flow Control Body
7	*10300	1	O-ring (5/8 X 15/32 X 5/64)	59	26571	1	Tapped Guide
8	25738	1	Regulator Valve	60	12721	1	Plastic Knob
9	*10265	1	O-ring (5/16 X 3/16 X 1/16)	61	11489	1	Measuring Chamber Ass'y
10	10022	3	Cap Screw (1/4-20 UNC X 1-1/2 Lg.)	62	*12599	1	O-ring (4 1/4 X 4" X 1/8)
12	*10266	3	O-ring (3/8 X 1/4 X 1/16)	63	23260	1	Drive Shaft Assembly
13	213628	1	Tachometer (After 8-1-88, includes item #35.)	64	13440	1	Roller
14	205521	1	Plug	65	23023	1	Gear Plate
15	34117	1	Panel	66	*12556	1	Teflon Glyd Ring
16	46707	1	Gauge Block	67	*12557	1	O-ring (11/32 X 7/32 X 1/16)
18	12657	1	Retaining Ring (1/4" shaft)	68	25564	1	Shaft Seal
19	12594	2	Brass Washer (9/16 X 17/64 X 3/64)	69	*11284	1	O-ring (11/16 X 9/16 X 1/16)
22	12563	2	Needle Bearing	70	10427	2	Pipe Plug (1/8" NPTF)
32	11351	2	Lockwasher (1/4" external tooth)	71	50309	1	Lower Body
33	10005	2	Cap Screw (1/4-20 UNC X 1/2" Lg.)	72	*12745	2	O-ring (1 5/32 X .924 X .116)
34	213387	1	Axle	73	11105	2	Plug Fitting (3/4 NPTF)
35	213389	1	Gauge Bracket (After 8-1-88, included with Item #13.)	74	22117	2	Leg
36	104406	1	Washer (For 3/4" bolt)	75	12565	2	Needle Bearing
37	213388	1	Bearing Support	76	12595	2	Brass Washer (1 - 1/8 X 1/2 X .077 thk.)
38	213424	1	Spacer	77	25566	1	Drive Assembly
39	11899	1	Retaining Ring (1/4" shaft)	78	21837	2	Nipple
41	31939	1	Shift Support	79	*16230	3	Safety Valve Assembly (Torque to 25/32 ft. lbs.)
42	25704	2	Spacer	80	10017	1	Cap Screw (1/4-20 UNC X 1" Lg.)
43	12569	1	Timing Belt	81	22094	1	Leg
44	25615	1	Driven Assembly	<b>PARTS INCLUDED BUT NOT SHOWN</b>			
48	*10280	1	O-ring (1-3/8 X 1-1/8 X 1/8)				
49	12720	5	Cap Screw (5/8-11 X 2-3/4 Lg.; Torque to 90/110 ft. lbs. oiled)	12709	2	Straight Union Adapter	
50	13441	2	Machine Screw (#10-32 X 1/4 Lg.)				
51	50308	1	Upper Body				
52	25559	1	Poppet				

Part numbers marked with an asterisk (\*) are included in Repair Kit No. 300097.

To Convert to HT50A (Model C) or 4235 (Model C)  
single speed see Conversion Kit #300915

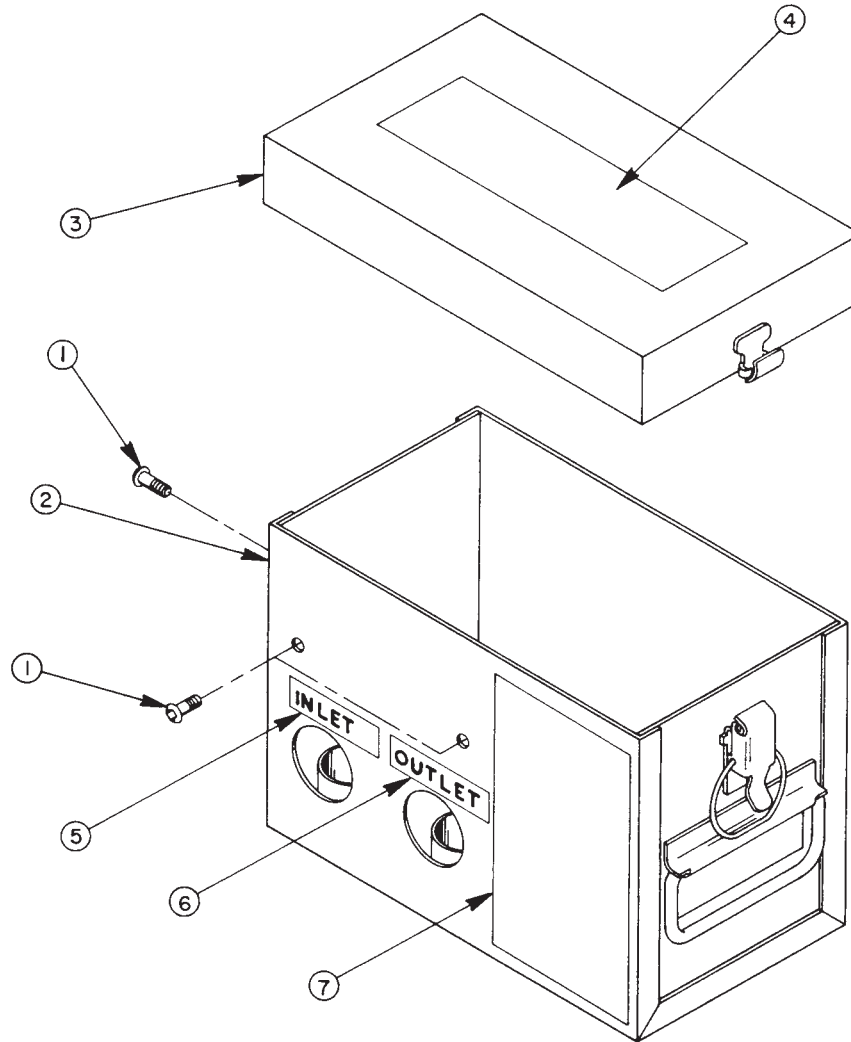
Refer to any operating instructions included with this product for detailed information about operation, testing, disassembly, reassembly, and preventive maintenance.

Items found in this parts list have been carefully tested and selected. **Therefore: Use only genuine replacement parts!**

Additional questions can be directed to one of our Technical Services Departments.

Note: Shaded areas reflect last revision(s) made to this form.

### HOUSING ASSEMBLY



Item No.	Part No.	No. Req'd	Description
1	15911	3	Cap Screw (1/4-20 X 5/8 Lg.)
2	50340BK2	1	Case
3	40844WH2	1	Cover
4	307258	1	Trade Name Decal (For HT50A)
	307259	1	Trade Name Decal (For 4235)
5	*207804	1	Decal
6	*207805	1	Decal
7	307363	1	Instruction Decal

Part numbers marked with an asterisk (\*) are included in Repair Kit No. 300097.