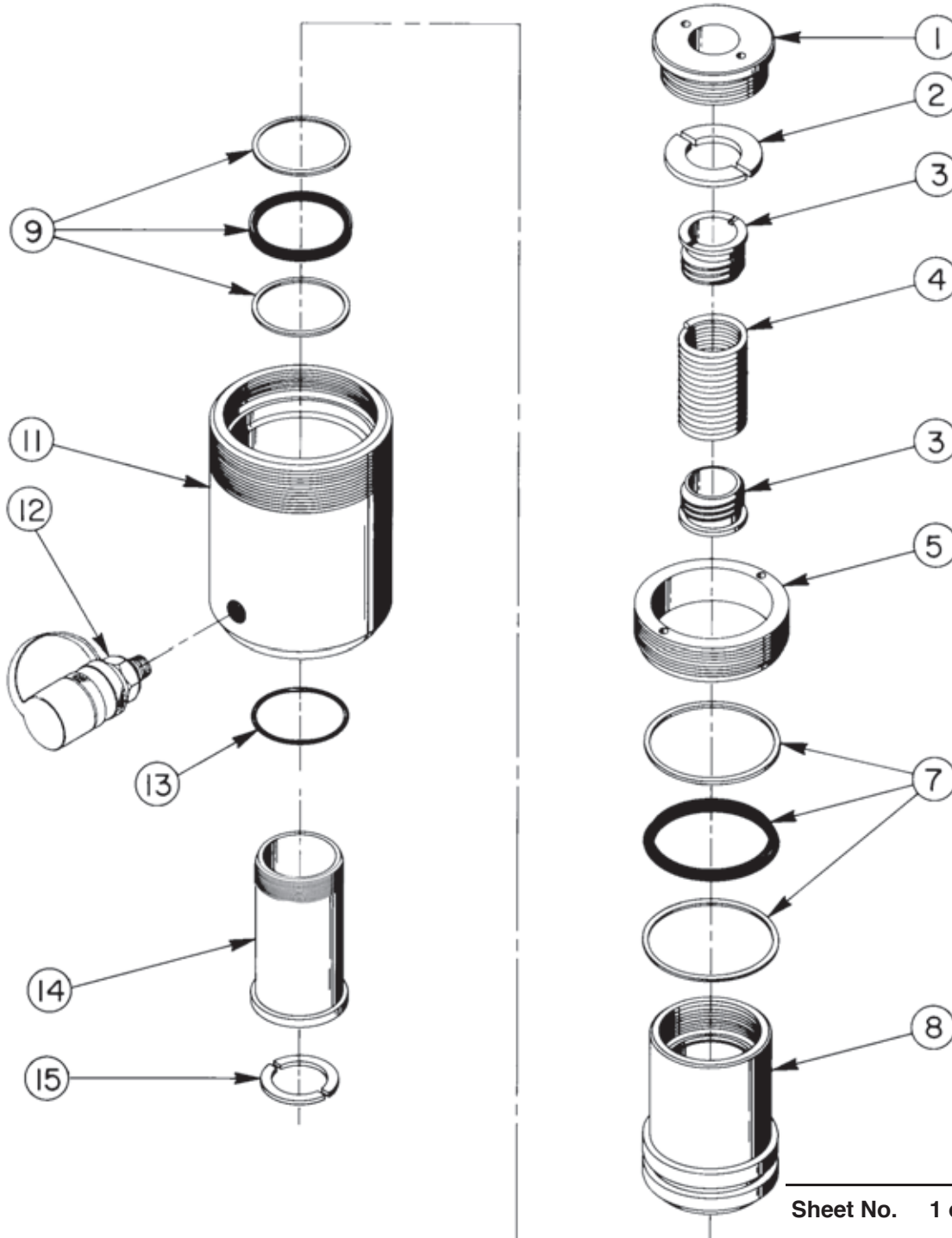


Parts List for:

RH503  
RH503-PFAFF

**MODEL C**  
**SINGLE-ACTING, HOLLOW CENTER, SPRING RETURN**  
**HYDRAULIC CYLINDER**  
Max. Capacity: 54.3 Tons At 10,000 PSI



Sheet No. 1 of 1

Rev. 3

Date: 26 Aug 2010

# Parts List, Form No. 108123, Back sheet 1 of 1

Item No.	Part No.	No. Req'd	Description
1	38859	1	Plain Insert
2	205066	2	Upper Spring Lock
3	38857	2	Spring Retainer
4	205083	1	Extension Spring
5	38858	1	Gland Nut
7	*19808	1	T-Seal (Piston) & Backup Rings (Smooth side of Backup Ring must be against seal.)
	†19917	1	T-Seal (Piston) & Backup Rings (Smooth side of Backup Ring must be against seal.)
	•252060	1	T-Seal (Piston) & Backup Rings (Smooth side of Backup Ring must be against seal.)
8	43519	1	Piston Rod
9	*19807	1	T-Seal (Rod) & Backup Rings (Smooth side of Backup Ring must be against seal.)
	†19918	1	T-Seal (Rod) & Backup Rings (Smooth side of Backup Ring must be against seal.)
	•252059	1	T-Seal (Rod) & Backup Rings (Smooth side of Backup Ring must be against seal.)
11	65376	1	Cylinder Body
12	9796	1	Ram Half Coupler w/ Dust Cap
13	*†19043	1	O-ring (3.00 x 2.75 Viton)
	*•10296	1	O-ring (3.00 x 2.75 Nitrile)
14	351374	1	Standpipe
15	205067	2	Lower Spring Lock

## PARTS INCLUDED BUT NOT SHOWN

351380	1	Trade Name Decal (For RH503)
252022	1	Trade Name Decal (For RH503-PFAFF)
•*203908	1	Warning Decal
•251880	1	O-ring (1" X 3/4 X 1/8; for coupler)
•252058	1	O-ring (3/4 X 9/16 X 3/32; for coupler)
421274	1	Thread Protector (For RH503)
203908-CE	1	Warning Decal (For RH503-PFAFF)
252186	1	Decal (For RH503-PFAFF)
†19526	1	O-ring (1" X 3/4 X 1/8; for coupler)
†205724	1	Decal (Viton)

Part numbers marked with an asterisk (\*) are contained in Repair Kit No. 300059.

Part numbers marked with a dagger (†) are contained in Viton Seal Kit No. 300225.

Part numbers marked with a bullet (•) are contained in Water Glycol Seal Kit No. 300877.

Refer to any operating instructions included with this product for detailed information about operation, testing, disassembly, reassembly, and preventive maintenance.

Items found in this parts list have been carefully tested and selected. **Therefore: Use only genuine Power Team replacement parts!**

Additional questions can be directed to our Technical Services Department.