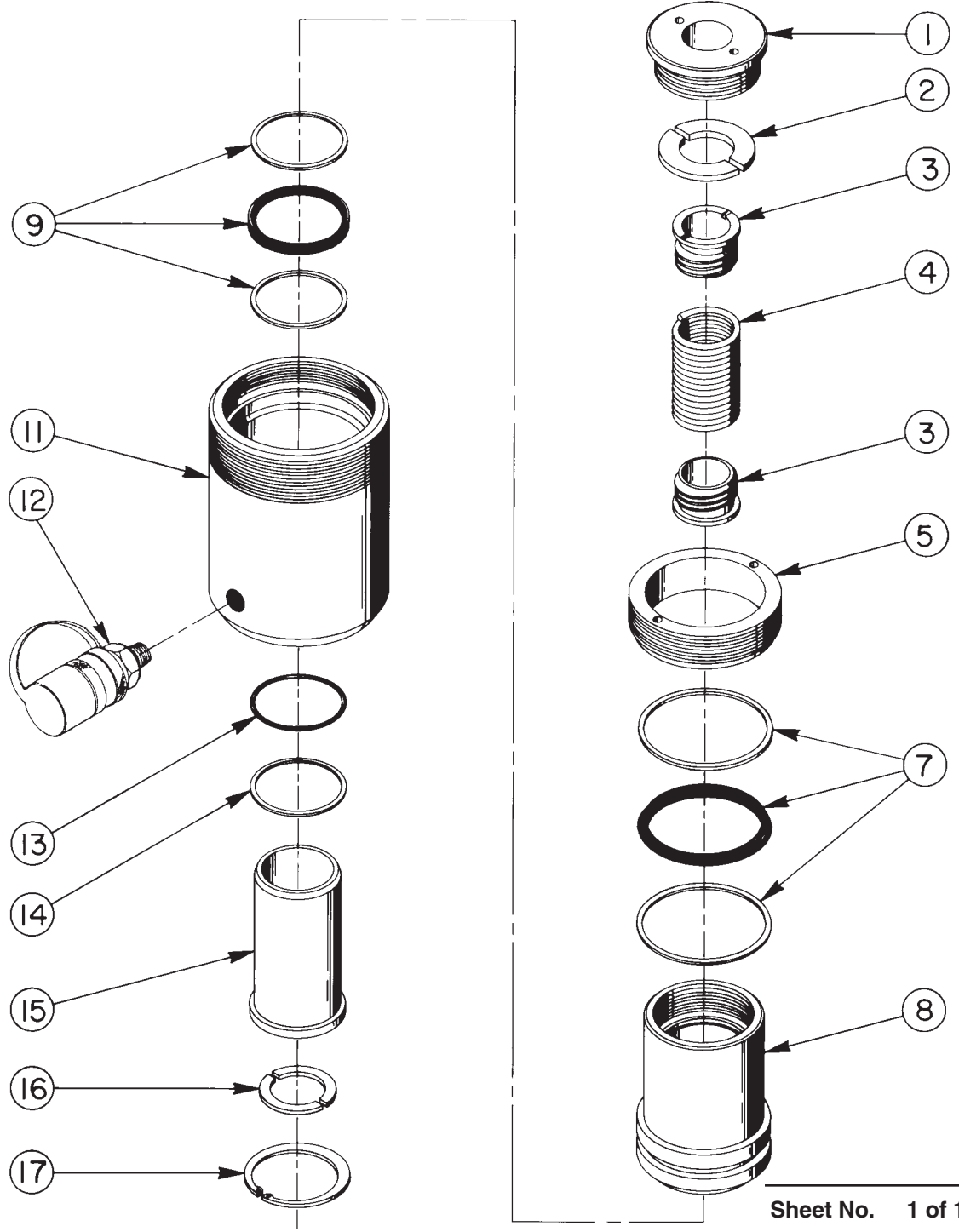


**SINGLE-ACTING, HOLLOW CENTER, SPRING RETURN
HYDRAULIC CYLINDER**

Max. Capacity: 54.3 Tons At 10,000 PSI



Parts List, Form No. 100318, Back sheet 1 of 1

Item No.	Part No.	No. Req'd	Description
1	38859	1	Plain Insert
2	205066	2	Upper Spring Lock
3	38857	2	Spring Retainer
4	205083	1	Extension Spring
5	38858	1	Gland Nut
7	*19808	1	T-Seal (Piston) & Backup Rings (Smooth side of Backup Ring must be against seal.)
	†19917	1	T-Seal (Piston) & Backup Rings (Smooth side of Backup Ring must be against seal.)
	•252060	1	T-Seal (Piston) & Backup Rings (Smooth side of Backup Ring must be against seal.)
8	43519	1	Piston Rod
9	*19807	1	T-Seal (Rod) & Backup Rings (Smooth side of Backup Ring must be against seal.)
	†19918	1	T-Seal (Rod) & Backup Rings (Smooth side of Backup Ring must be against seal.)
	•252059	1	T-Seal (Rod) & Backup Rings (Smooth side of Backup Ring must be against seal.)
11	51433	1	Cylinder Body
12	9796	1	Ram Half Coupler w/ Dust Cap
13	*10296	1	O-ring (3 X 2-3/4 X 1/8 CS, -232)
	†19043	1	O-ring (3 X 2-3/4 X 1/8, -232)
14	*†19163	1	Backup Washer (Teflon, -232)
15	43518	1	Stand Pipe
16	205067	2	Lower Spring Lock
17	19806	1	Internal Retaining Ring (For 3" bore)

PARTS INCLUDED BUT NOT SHOWN

†19526	1	O-ring (1" X 3/4 X 1/8, -210; for coupler)
†205724	1	Decal (Viton)
38881	1	Trade Name Decal
•*203908	1	Warning Decal
*207207	1	Important Decal
•251880	1	O-ring (1" X 3/4 X 1/8, -210; for coupler)
•252058	1	O-ring (3/4 X 9/16 X 3/32, -113; for coupler)

Part numbers marked with an asterisk (*) are contained in Standard Repair Kit No. 300059.

Part numbers marked with a dagger (†) are contained in Viton Seal Kit No. 300225.

Part numbers marked with a bullet (•) are contained in Water Glycol Seal Kit No. 300877.

Refer to any operating instructions included with this product for detailed information about operation, testing, disassembly, reassembly, and preventive maintenance.

Items found in this parts list have been carefully tested and selected. **Therefore: Use only genuine Power Team replacement parts!**

Additional questions can be directed to our Technical Services Department.