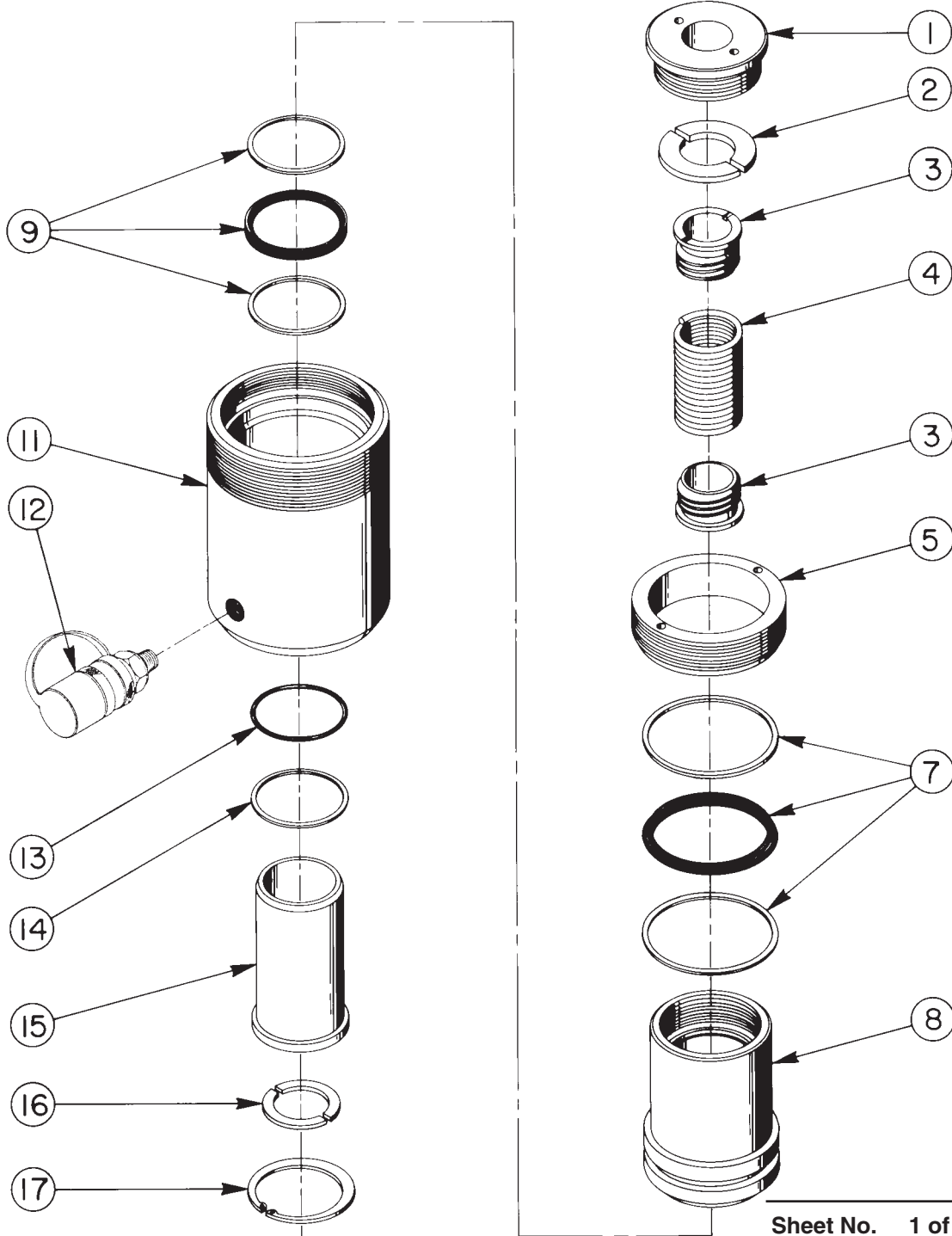


SINGLE-ACTING, HOLLOW CENTER, SPRING RETURN HYDRAULIC CYLINDER

Maximum Capacity: 31.7 Tons At 10,000 PSI



Parts List, Form No. 100317, Back sheet 1 of 1

Item No.	Part No.	No. Req'd	Description
1	38905	1	Plain Insert
2	205106	2	Upper Spring Lock
3	38903	2	Spring Retainer
4	205109	1	Extension Spring
5	38906	1	Gland Nut
7	*19826	1	T-Seal (Piston) & Backup Rings (Smooth side of backup ring must be against seal.)
	†19827	1	T-Seal (Piston) & Backup Rings (Smooth side of backup ring must be against seal.)
8	51441	1	Piston Rod
9	*19824	1	T-Seal (Rod) & Backup Rings (Smooth side of backup ring must be against seal.)
	†19825	1	T-Seal (Rod) & Backup Rings (Smooth side of backup ring must be against seal.)
11	51440	1	Cylinder Body
12	25600	1	Ram Half Coupler
13	*10295	1	O-ring (2-1/2 X 2-1/4 X 1/8 CS)
	†19040	1	O-ring (2-1/2 X 2-1/4 X 1/8)
14	*†19148	1	Backup Washer (Teflon)
15	43531	1	Stand Pipe
16	205105	2	Lower Spring Lock
17	14366	1	Internal Retaining Ring (For 2-1/2 bore)

PARTS INCLUDED BUT NOT SHOWN

†19526	1	O-ring (1" X 3/4 X 1/8; For coupler)
†205724	1	Decal (Viton)
38902	1	Trade Name Decal
*203908	1	Warning Decal
*207207	1	Important Decal

Part numbers marked with an asterisk (*) are contained in Standard Repair Kit No. 300037.

Part numbers marked with dagger (†) are contained in Viton Seal Kit No. 300223.

Refer to any operating instructions included with this product for detailed information about operation, testing, disassembly, reassembly, and preventive maintenance.

Items found in this parts list have been carefully tested and selected. **Therefore: Use only genuine Power Team replacement parts!**

Additional questions can be directed to our Technical Services Department.