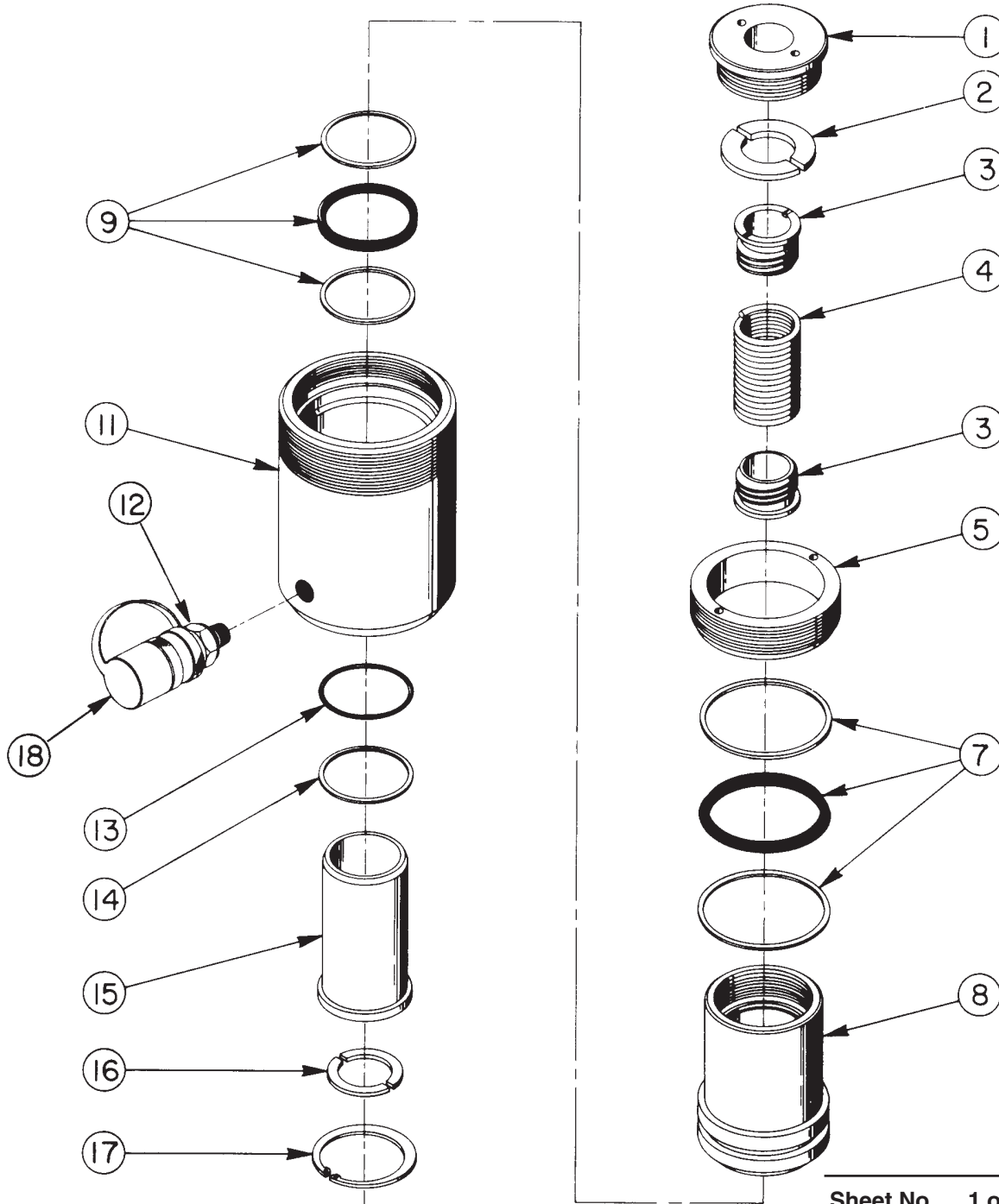


Parts List for:

5P-5247
4131
RH102
YH10A
YH10A-DN

MODEL B
SINGLE-ACTING, HOLLOW CENTER, SPRING RETURN
HYDRAULIC CYLINDER

Max. Capacity: 11 Tons at 10,000 PSI



Parts List, Form No. 100320, Back sheet 1 of 1

Item No.	Part No.	No. Req'd	Description
1	28631	1	Insert
2	205123	2	Upper Spring Lock
3	28628	2	Spring Retainer
4	14255	1	Extension Spring
5	28624	1	Gland Nut
7	*14253	1	T-Seal (Piston) & Backup Rings (Smooth side of Backup Ring must be against seal.)
	†19238	1	T-Seal (Piston) & Backup Rings (Smooth side of Backup Ring must be against seal.)
8	34120	1	Piston Rod
9	*14254	1	T-Seal (Rod) & Backup Rings (Smooth side of Backup Ring must be against seal.)
	†19234	1	T-Seal (Rod) & Backup Rings (Smooth side of Backup Ring must be against seal.)
11	51417	1	Cylinder Body (Unpainted)
12	9796	1	Ram Half Coupler w/Dust Cap (For RH102)
	25600-1	1	Ram Half Coupler (For 4131, YH10A, & YH10A-DN)
	1P-2375	1	Ram Half Coupler (For 5P-5247 only)
13	*14739	1	O-ring (Teflon; 1-11/16 X 1-1/2 X 3/32)
	†19010	1	O-ring (1-11/16 X 1-1/2 X 3/32)
14	*†19272	1	Backup Washer (Teflon)
15	38766	1	Stand Pipe
16	205124	2	Lower Spring Lock
17	19673	1	Internal Retaining Ring (For 2-1/4 bore)
18	9866	1	Dust Cap (For 4131, YH10A, & YH10A-DN)
	1P-7437	1	Dust Cover (For 5P-5247)

PARTS INCLUDED BUT NOT SHOWN

†19526	1	O-ring (1" X 3/4 X 1/8; for coupler)
†205724	1	Decal (Viton)
13648	1	Trade Name Decal (For 5P-5247)
209299	1	Trade Name Decal (For 4131)
38767	1	Trade Name Decal (For RH102)
204957	1	Trade Name Decal (For YH10A)
14801	1	Trade Name Decal (For YH10A-DN)
14802	1	Tonnage Decal (For YH10A-DN)
*203908	1	Warning Decal
*207207	1	Important Decal

Part numbers marked with an asterisk (*) are contained in Standard Repair Kit No. 300071.

Part numbers marked with a dagger (†) are contained in Viton Seal Kit No. 300221.

Refer to any operating instructions included with this product for detailed information about operation, testing, disassembly, reassembly, and preventive maintenance.

Items found in this parts list have been carefully tested and selected. **Therefore: Use only genuine replacement parts!**

Additional questions can be directed to our Technical Services Department.