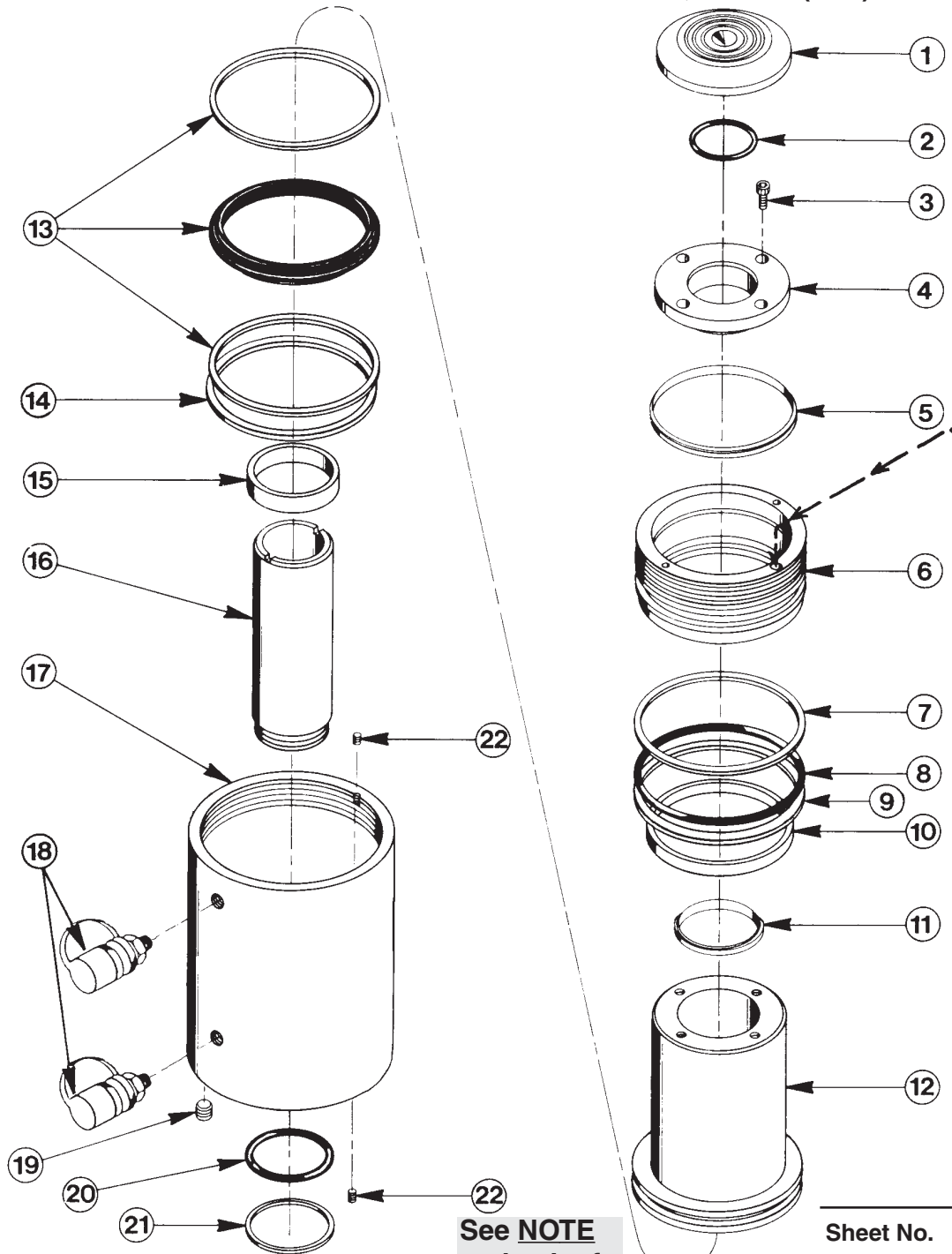


MODEL C
DOUBLE-ACTING, HOLLOW CENTER
HYDRAULIC CYLINDER
Max. Capacity: 100.1 Tons at 10,000 PSI (Push)
54.7 Tons at 10,000 PSI (Pull)



To Parts List

Double-acting
Cylinder
Relief Valve

See important
! DANGER
statement
on back of
sheet 1 of 1

See NOTE
on back of
sheet 1 of 1

Sheet No. 1 of 1

Rev. 1 Date: 15 Mar. 1999



DANGER: To help avoid possible serious personal injury or death,

- In the event that the cylinder retract port is ever restricted or plugged, a double-acting cylinder relief valve will help prevent excessive pressure from building in the cylinder. **DO NOT** attempt to adjust or service this relief valve! If oil leakage is detected from this relief valve, discontinue use of the cylinder immediately and contact Power Team Technical Services. Only Power Team Authorized Hydraulic Service Centers should service this relief valve.

| Item No. | Part No. | No. Req'd | Description |
|----------|----------|-----------|---|
| 1 | 38300 | 1 | Serrated Insert |
| 2 | *10294 | 1 | O-ring (2" x 1-3/4 x 1/8) |
| | †11447 | 1 | O-ring (2" x 1-3/4 x 1/8) |
| 3 | 10006 | 4 | Soc. Hd. Cap Screw (1/4-20 x 5/8 Lg.; Torque to 140-160 in. lbs.) |
| 4 | 38301 | 1 | End Cap |
| 5 | *207608 | 1 | Rod Wiper |
| | †206126 | 1 | Rod Wiper |
| 6 | 51270 | 1 | Retainer Nut |
| 7 | †*19175 | 1 | Teflon Backup Washer |
| 8 | *17480 | 1 | O-ring (6" x 5-3/4 x 1/8) |
| | †206867 | 1 | O-ring (6" x 5-3/4 x 1/8) |
| 9 | †206813 | 1 | Teflon Backup Washer |
| 10 | *18932 | 1 | U-cup (4-3/4 x 4-3/8 x 3/8) |
| | †206147 | 1 | U-cup (4-3/4 x 4-3/8 x 1/16) |
| 11 | *18931 | 1 | Rod Wiper |
| | †206124 | 1 | Rod Wiper |
| 12 | 58443 | 1 | Piston |
| 13 | *18934 | 1 | T-seal (Piston) & Backup Rings (Smooth side of Backup Ring must be against seal.) |
| | †19247 | 1 | T-seal (Piston) & Backup Rings (Smooth side of Backup Ring must be against seal.) |
| 14 | †206812 | 1 | Teflon Backup Washer |
| 15 | *18933 | 1 | U-cup (3-1/4 x 2-3/4 x 3/8) |
| | †206148 | 1 | U-cup (3-1/4 x 2-3/4 x 1/4) |

| Item No. | Part No. | No. Req'd | Description |
|----------|----------|-----------|---|
| 16 | 38299 | 1 | Standpipe (Note: Bottom out and back off [.01] 1/8 revolution before adding set screw [Item #14].) |
| 17 | 65852 | 1 | Cylinder Body |
| 18 | 9796 | 2 | Ram Half Quick Coupler |
| 19 | 18929 | 4 | Set Screw (1/2-13 x 1/2 Lg.) |
| 20 | *10296 | 1 | O-ring (3" x 2-3/4 x 1/8) |
| | †206866 | 1 | O-ring (3" x 2-3/4 x 1/8) |
| 21 | †*19163 | 1 | Teflon Backup Washer |
| 22 | 10556 | 2 | Set Screw (1/4-20 x 1/4 Lg.; For locking Standpipe [Item #16] and Retainer Nut [Item #6] in place. See NOTE below.) |

PARTS INCLUDED BUT NOT SHOWN

| | | |
|-----------|---|---|
| *203908 | 1 | Warning Decal (For RH1006) |
| 351736 | 1 | Trade Name Decal (For RH1006) |
| †19526 | 2 | O-ring (For coupler; 1" x 3/4 x 1/8) |
| †205724 | 1 | Decal (Viton) |
| 203908-CE | 1 | Warning Decal (For RH1006-PFAFF) |
| 252186 | 1 | Trade Name Decal (For RH1006-PFAFF) |
| 421709OR9 | 1 | Cylinder Lift Handle (For RH1006) |
| 421709BL6 | 1 | Cylinder Lift Handle (For RH1006-PFAFF) |



Part numbers marked with an asterisk (*) are contained in Standard Repair Kit No. 300295.

Part numbers marked with a dagger (†) are contained in Viton Seal Kit No. 300227.

NOTE: Cylinders built after 1-1-99 require only one set screw (the one located in the top of the cylinder). Loctite 242 is used on the last 2-3 standpipe threads only.

Refer to any operating instructions included with this product for detailed information about operation, testing, disassembly, reassembly, and preventive maintenance.

Items found in this parts list have been carefully tested and selected. **Therefore: Use only genuine Power Team replacement parts!**

Additional questions can be directed to our Technical Services Department.

Note: Shaded areas reflect last revision(s) made to this form.