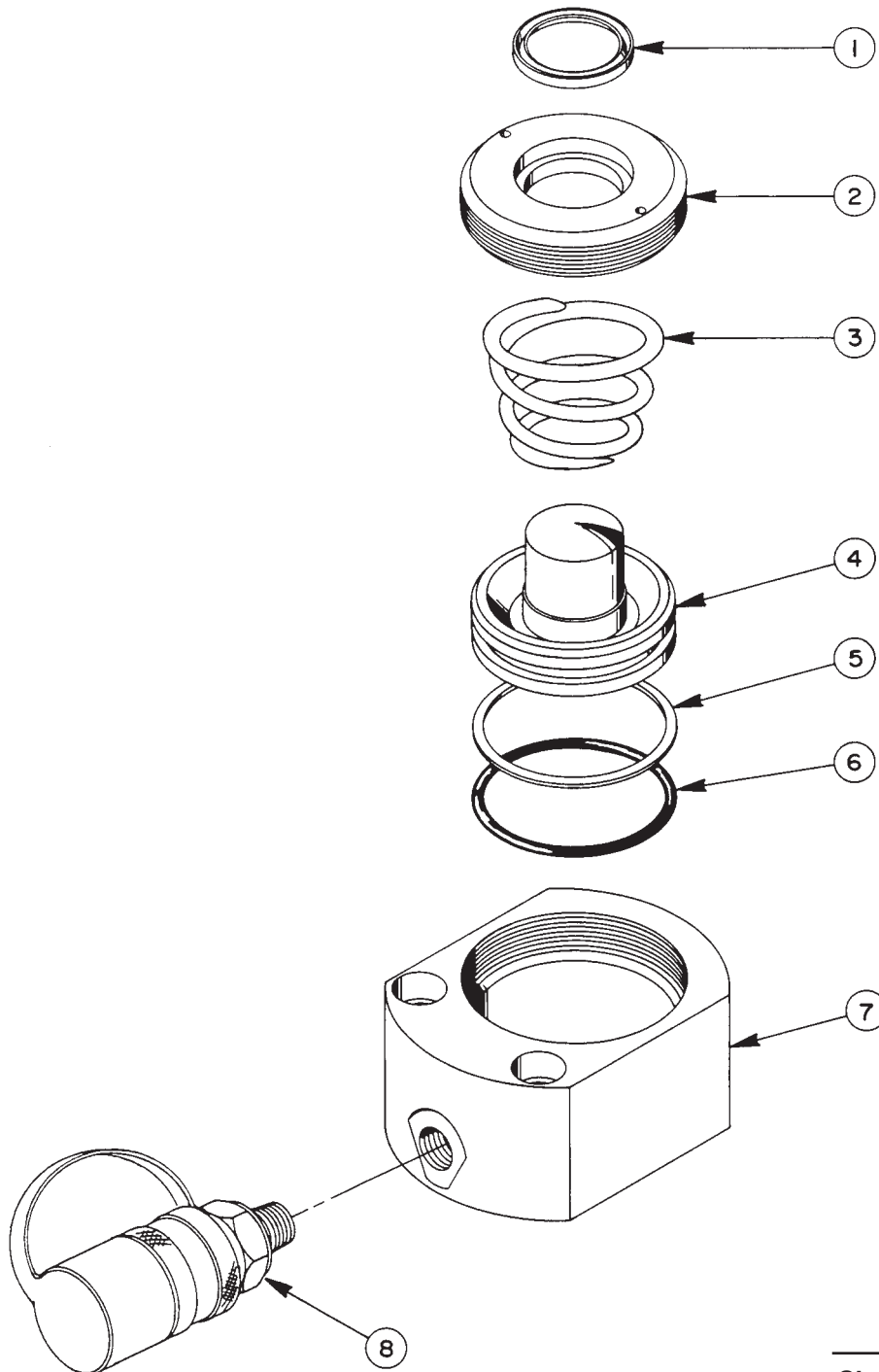


Parts List for:

5RLS300S  
RLS300  
RLS300-PFAFF

**SINGLE-ACTING, SPRING RETURN  
HYDRAULIC CYLINDER**  
Max. Capacity: 32.5 Tons at 10,000 PSI



# Parts List, Form No. 100636, Back sheet 1 of 1

Item No.	Part No.	No. Req'd	Description
1	*15505	1	Rod Wiper
2	46247	1	Retainer (Torque to 500/525 in. lbs.)
3	306369	1	Compression Spring
4	46246	1	Piston
5	*19717	1	Backup Washer
6	*10936	1	O-ring (2-7/8 X 2-5/8 X 1/8)
7	52624	1	Cylinder Body
8	9796	1	Cylinder Half Coupler w/Dust Cap (For RLS300 & RLS300-PFAFF)
9	210916	1	Coupler (For 5RLS300S)

### PARTS INCLUDED BUT NOT SHOWN

*203908	1	Warning Decal
351913	1	Trade Name Decal (For RLS300)
212357	1	Trade Name Decal (For 5RLS300S)
203908-CE	1	Warning Decal (For RLS300-PFAFF)
252207	1	Trade Name Decal (For RLS300-PFAFF)

Part numbers marked with an asterisk (\*) are contained in Repair Kit No. 300457.

Refer to any operating instructions included with this product for detailed information about operation, testing, disassembly, reassembly, and preventive maintenance.

Items found in this parts list have been carefully tested and selected. **Therefore: Use only genuine Power Team replacement parts!**

Additional questions can be directed to our Technical Services Department.

Note: Shaded areas reflect last revision(s) made to this form.