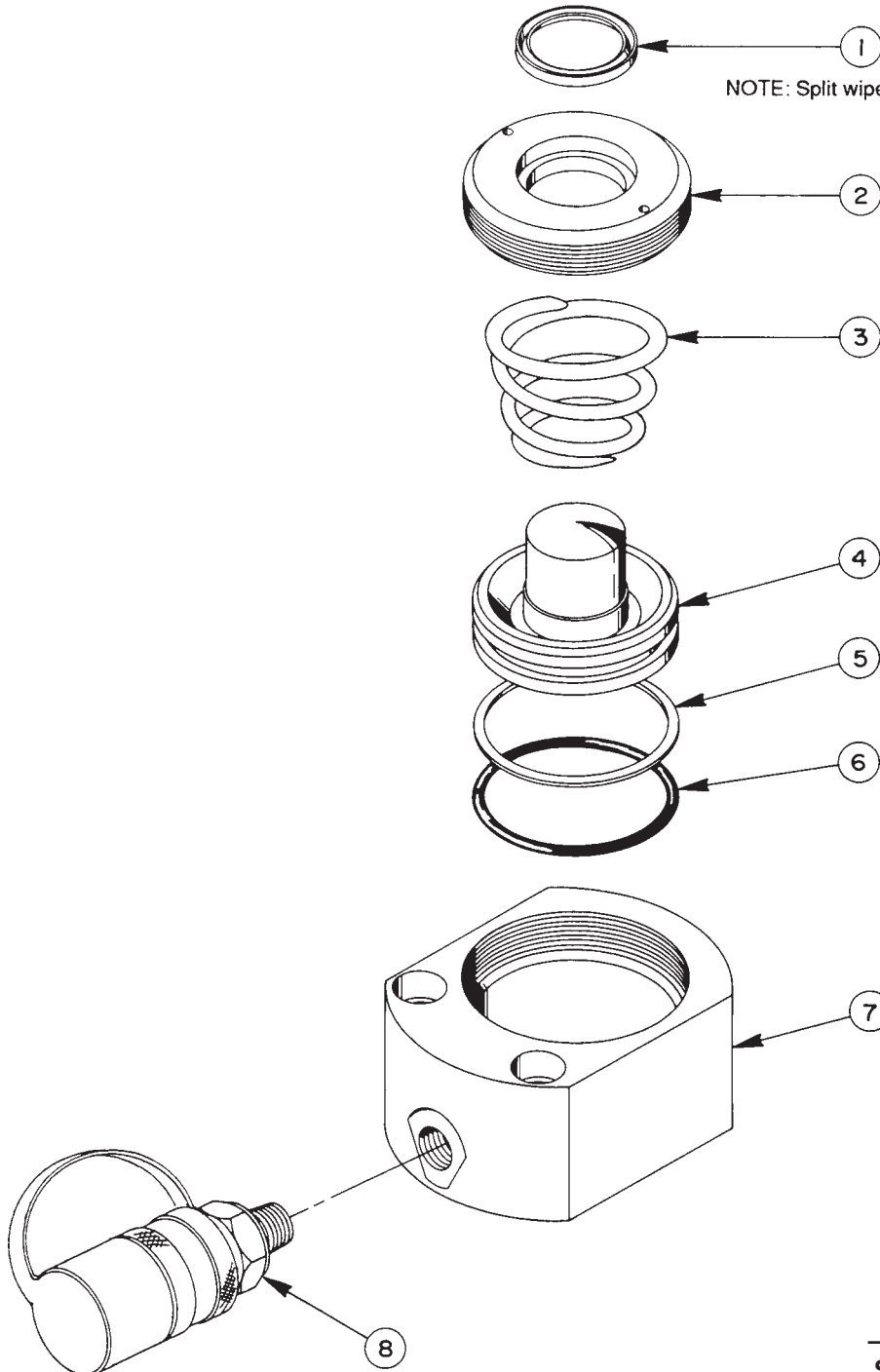


## SINGLE-ACTING, SPRING RETURN HYDRAULIC CYLINDER

Max. Capacity: 98.2 Tons at 10,000 PSI



# Parts List, Form No. 100645, Back sheet 1 of 1

---

| Item No. | Part No. | No. Req'd | Description                                 |
|----------|----------|-----------|---|
| 1        | *212219  | 1         | Rod Wiper (Split wiper at assembly)         |
| 2        | 52642    | 1         | Retainer (Torque to 500/525 in. lbs.)       |
| 3        | 306425   | 1         | Compression Spring                          |
| 4        | 52641    | 1         | Piston                                      |
| 5        | *19173   | 1         | Backup Washer (5 X 4-3/4 X .048, -248)      |
| 6        | *12199   | 1         | O-ring (5 X 4-3/4 X 1/8, -248)              |
| 7        | 52643    | 1         | Cylinder Body                               |
| 8        | 9796     | 1         | Ram Half Coupler w/Dust Cap (For 5RLS1000S) |

### PARTS INCLUDED BUT NOT SHOWN

|         |   |                                  |
|---------|---|----------------------------------|
| 16473   | 1 | Patent Decal                     |
| *203908 | 1 | Warning Decal                    |
| 212038  | 1 | Trade Name Decal (For RLS1000)   |
| 212933  | 1 | Trade Name Decal (For 5RLS1000S) |

Part numbers marked with an asterisk (\*) are contained in Repair Kit No. 300460.

Refer to any operating instructions included with this product for detailed information about operation, testing, disassembly, reassembly, and preventive maintenance.

Items found in this parts list have been carefully tested and selected. **Therefore: Use only genuine Power Team replacement parts!**

Additional questions can be directed to our Technical Services Department.

Note: Removed 205275 Warning Decal.