

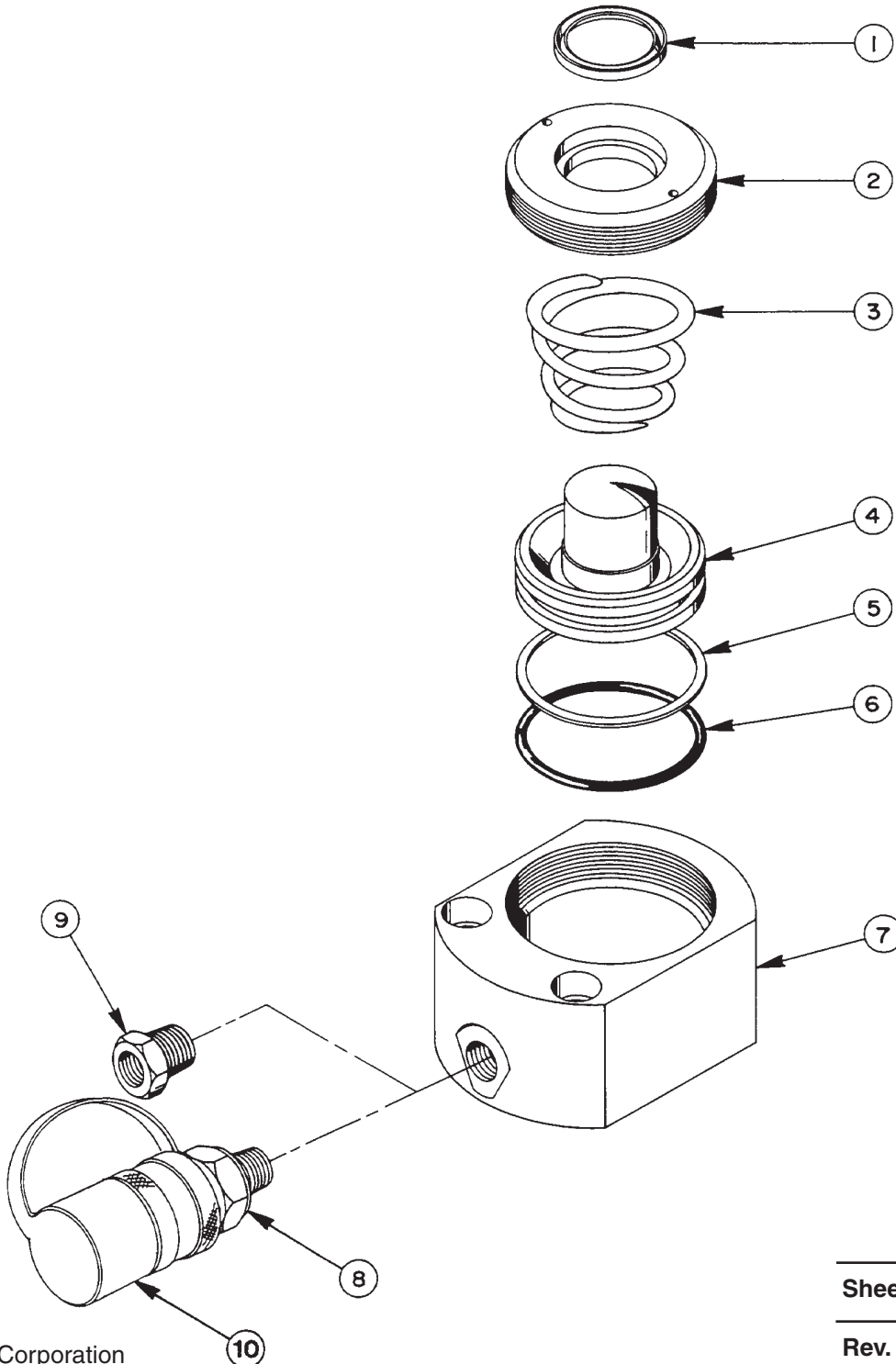
Parts List for:

5RLS100S  
100201  
421658  
RLS100

RLS100-GLFP  
RLS100-KAW  
RLS100-PFAFF

## SINGLE-ACTING, SPRING RETURN HYDRAULIC CYLINDER

Max. Capacity: 5.6 Tons at 5,000 PSI  
11.2 Tons at 10,000 PSI



# Parts List, Form No. 100631, Back sheet 1 of 1

Item No.	Part No.	No. Req'd	Description
1	*15088	1	Rod Wiper
2	46203	1	Retainer (Torque to 300/350 in. lbs.)
3	212044	1	Compression Spring (For all models except RLS100-GLFP)
4	46205	1	Piston (For all models except 421658 & RLS100-GLFP)
	421659	1	Piston (For 421658)
	421742	1	Piston (For RLS100-GLFP)
5	*19272	1	Backup Washer
6	*14739	1	O-ring (1-11/16 X 1-1/2 X 3/32)
7	46206	1	Cylinder Body
8	9796	1	Cylinder Half Coupler w/Dust Cap (For RLS100, RLS100-PFAFF & RLS100-GLFP)
	210916	1	Coupler (For 5RLS100S)
	250365	1	Coupler (For RLS100-KAW)
9	10676	1	Straight Fitting (For 100201)
10	9790	1	Dust Cap (For RLS100-KAW)

### PARTS INCLUDED BUT NOT SHOWN

	16473	1	Patent Decal
	*203908	1	Warning Decal (For 100201 & 421658)
	212064	1	Warning Decal (For RLS100, RLS100-KAW & RLS100-GLFP)
	351911	1	Trade Name Decal (For RLS100)
	212355	1	Trade Name Decal (For 5RLS100S)
	215829	1	Trade Name Decal (For 100201 & 421658)
	251931	1	Trade Name Decal (For RLS100-PFAFF)
	212064-CE	1	Warning Decal (For RLS100-PFAFF)
	252182	1	Decal (For RLS100-PFAFF)

Part numbers marked with an asterisk (\*) are contained in Repair Kit No. 300455.

Refer to any operating instructions included with this product for detailed information about operation, testing, disassembly, reassembly, and preventive maintenance.

Items found in this parts list have been carefully tested and selected. **Therefore: Use only genuine Power Team replacement parts!**

Additional questions can be directed to our Technical Services Department.

Note: Shaded areas reflect last revision(s) made to this form.