

Parts List for:

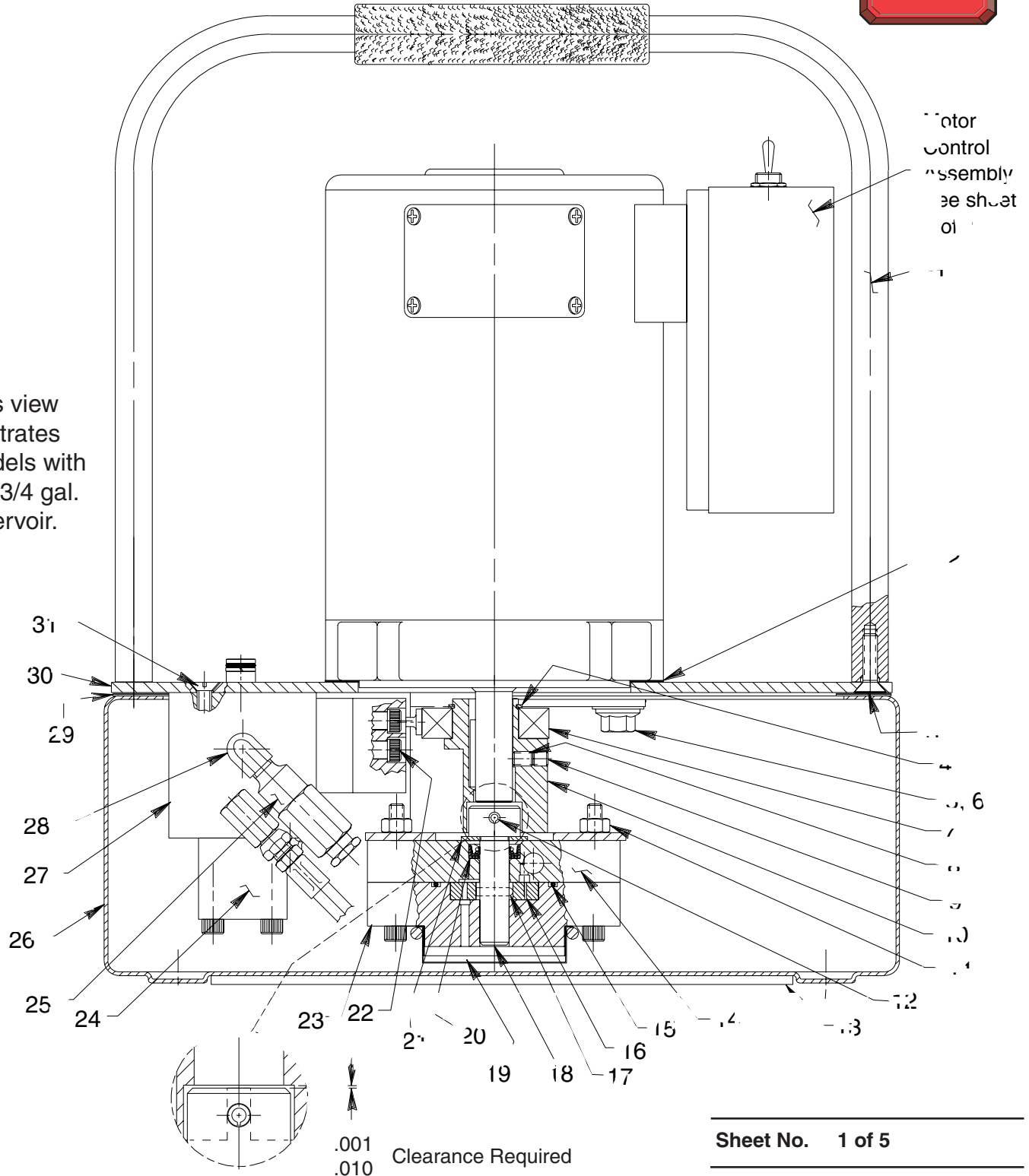
PE302R	PE303R-2
PE302R-2	PE304R
PE303R	PE304R-2

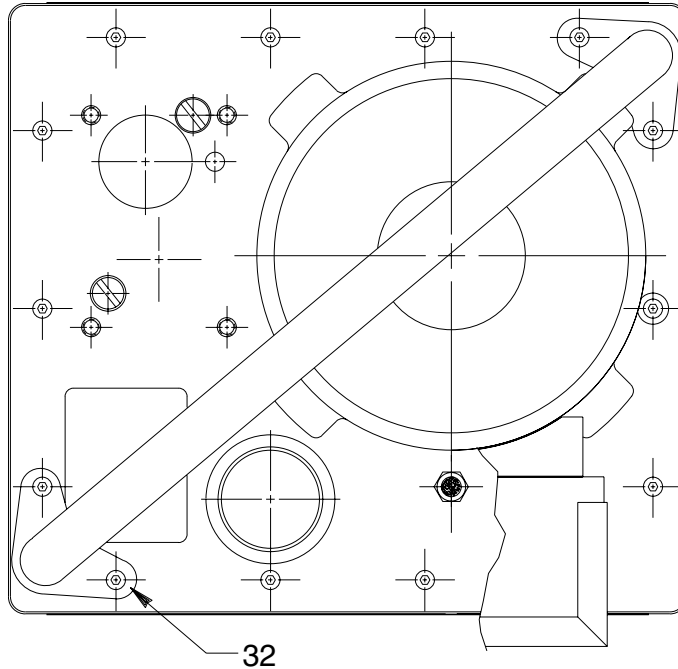
## ELECTRIC HYDRAULIC PUMP

Max. Capacity: 10,000 PSI



This view illustrates models with a 1-3/4 gal. reservoir.





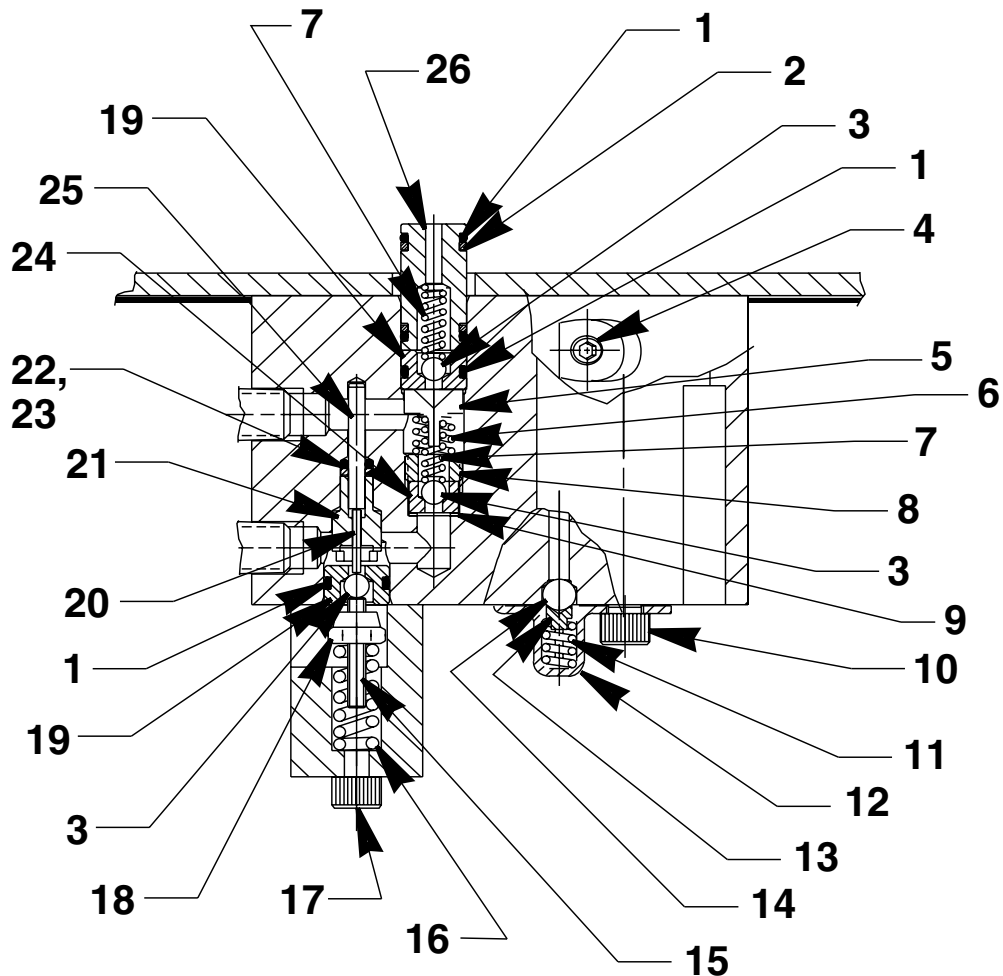
This view illustrates the handle orientation, and its mounting, on models with a one gallon reservoir.

Item No.	Part No.	No. Req'd	Description
1	<b>64677BK2</b>	1	Handle (For PE302R, PE303R, & PE304R)
	<b>64582BK2</b>	1	Roll Cage Frame (For PE302R-2, PE303R-2, & PE304R-2)
2	<b>351060</b>	1	Motor Base Gasket
3	<b>11529</b>	4	Cap Screw (1/4-20 UNC x 3/4 Lg.; Apply Loctite No. 242 or equiv. and torque to 70 in. lbs. - For PE302R-2, PE303R-2, & PE304R-2)
4	<b>209798</b>	1	Retaining Ring
5	<b>213663</b>	4	Cap Screw (3/8-16 UNC X 1" Lg.)
6	<b>10258</b>	4	Washer (For 3/8 bolt)
7	<b>209805</b>	1	Ball Bearing
8	<b>10136</b>	1	Set Screw (1/4-20 UNC x 1/4 Lg.; Torque to 70 in. lbs.)
9	<b>10519</b>	1	Set Screw (1/4-20 UNC X 3/8 Lg.; Torque to 70 in. lbs.)
10	<b>420840</b>	1	Eccentric
11	<b>10199</b>	2	Hex Nut (1/4-20 UNC)
12	<b>12298</b>	1	Roll Pin (3/16 dia. x 1-1/2" Lg.)
13	<b>420427</b>	1	Rubber Pad (For PE302R-2, PE303R-2, & PE304R-2; NOTE: Apply 3M adhesive # to bottom of reservoir and pad.)
	<b>420948</b>	1	Rubber Pad (For PE302R, PE303R, & PE304R; NOTE: Apply 3M adhesive # to bottom of reservoir and pad.)
14	<b>64623</b>	1	Upper Gerotor Housing
15	<b>10922</b>	1	O-ring (2-1/8" X 1-15/16" X 3/32)
16	<b>304826</b>	1	Gerotor

Item No.	Part No.	No. Req'd	Description
17	<b>209794</b>	1	Gerotor Drive Pin
18	<b>350940</b>	1	Gerotor Shaft
19	<b>21846</b>	1	Filter Support
20	<b>304830</b>	1	Oil Seal
21	<b>12595</b>	1	Washer (1-1/8" X 1/2 X .077 Thk.)
22	<b>10022</b>	4	Screw (1/4-20 UNC X 1-1/2" Lg.; Torque to 190 in. lbs.)
23	<b>64580</b>	1	Gerotor Housing
24	<b>350930</b>	1	Retaining Block
25	<b>21278</b>	1	Relief Valve Assembly (Set at 10,100/10,700 PSI)
26	<b>64665OR9</b>	1	Reservoir (1 Gal. - For PE302R, PE303R, & PE304R)
	<b>64241OR9</b>	1	Reservoir (2 Gal. - For PE302R-2, PE303-2R, & PE304R-2)
27	<b>64612</b>	1	Check Body
28	<b>13229</b>	1	Street Elbow
29	<b>420931</b>	1	Reservoir Gasket (For PE302R, PE303R, & PE304R)
	<b>420424</b>	1	Reservoir Gasket (For PE302R-2, PE303R-2, & PE304R-2)
30	<b>64666BK2</b>	1	Cover Plate (For PE302R, PE303R, & PE304R)
	<b>64579BK2</b>	1	Cover Plate (For PE302R-2, PE303R-2, & PE304R-2)
31	<b>11529</b>	2	Screw (1/4-20 UNC x 3/4 Lg.)
32	<b>15911</b>	4	Cap Screw (1/4-20 5/8 Lg.; Apply Loctite No. 242 or equiv. and torque to 70 in. lbs. - For PE302R, PE303R, & PE304R)

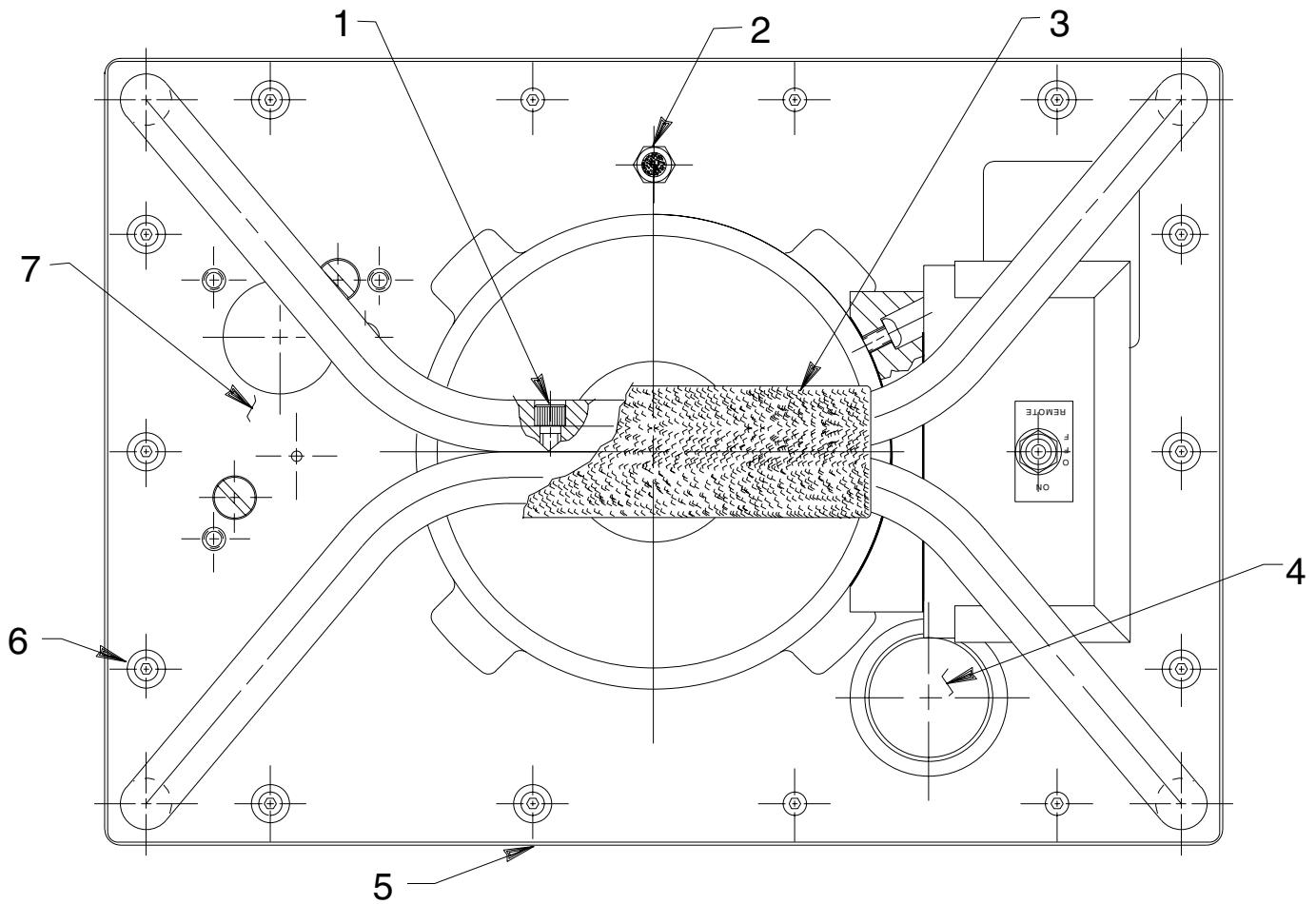


### HIGH PRESSURE PUMP ASSEMBLY



Item No.	Part No.	No. Req'd	Description
1	10268	4	O-ring (1/2 X 3/8 X 1/16)
2	11863	2	Backup Washer (1/2 X 3/8 X 1/16)
3	12223	4	Ball (3/16 Dia.)
4	15130	1	Plug (1/16 NPTF)
5	251601	1	Outlet Ball Stop
6	10444	1	Compression Spring (3/16 I.D. X 13/32 Lg.)
7	10445	2	Compression Spring (5/32 O.D. X 3/4 Lg.)
8	209797	1	Hollow Lock Screw (7/16-20 UNF-3A; Torque to 110/130 in. lbs.)
9	10442	1	Washer (3/8 X 1/4 X 1/32)
10	10002	1	Cap Screw (1/4-20 UNC X 3/8 Lg.; Torque to 60/80 in. lbs.)
11	15691	1	Compression Spring (1/4 O.D. X 5/8 Lg.)

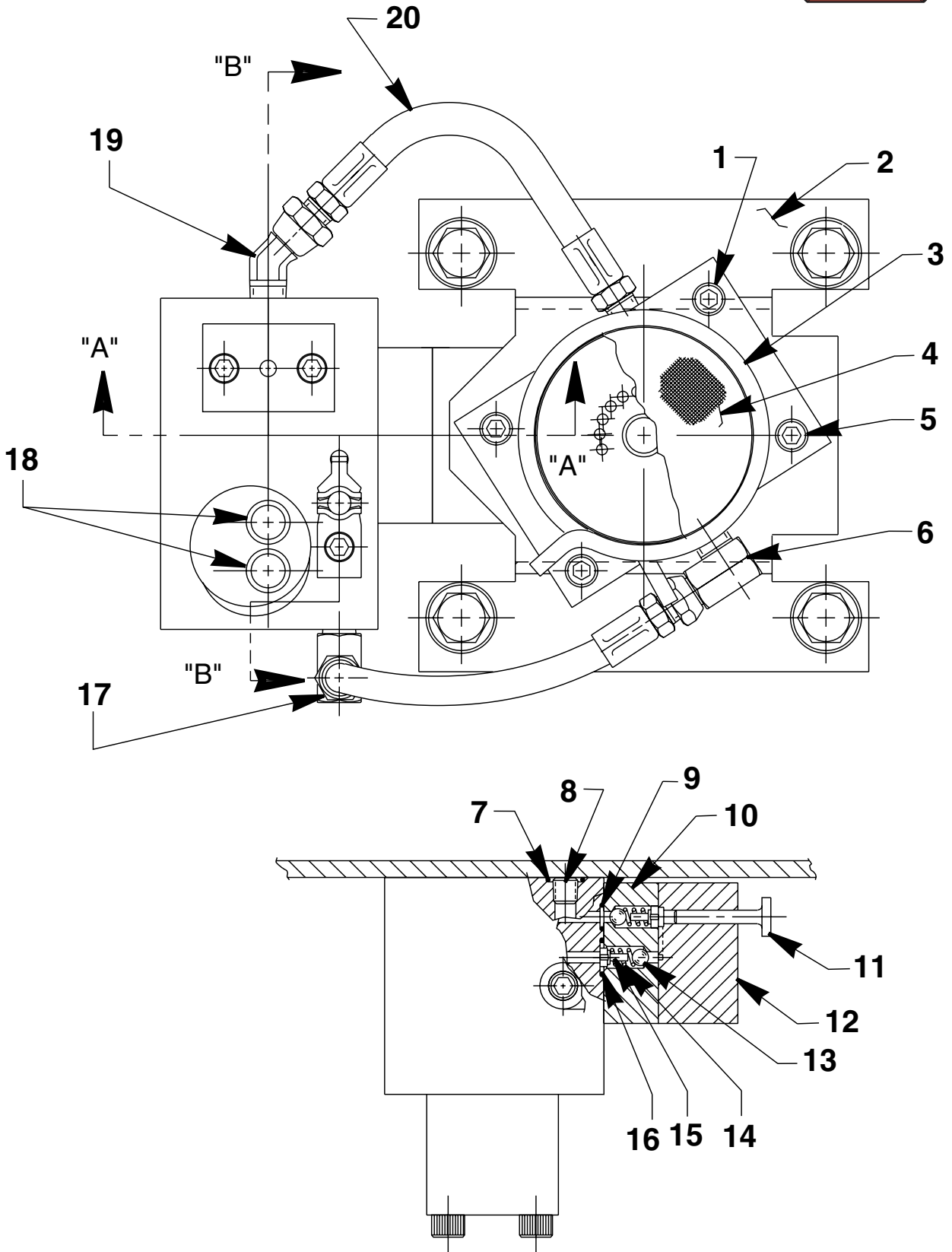
Item No.	Part No.	No. Req'd	Description
12	350577	1	Spring Retainer
13	200796	1	Adapter
14	10374	1	Steel Ball (7/32 Dia.)
15	251067	1	Set Screw (Unloading valve; #10-24 UNC x 1" Lg.)
16	14484	1	Compression Spring (3/8 O.D. X 1" Lg.)
17	10854	2	Cap Screw (1/4-20 UNC X 1-3/4" Lg.; Torque to 60/80 in. lbs.)
18	207405	1	Locknut (10-24 UNC)
19	251065	2	Replaceable Seat
20	251611	1	Dowel Pin (5/8 X 1/2 Lg.)
21	251068	1	Guide
22	17797	1	O-ring (1/4 X 1/8 X 1/16)
23	214992	1	Backup Ring (15/64 x 1/8 x 3/64)
24	209787	1	Replaceable Seat
25	16471	1	Dowel Pin (1/8 dia. x 1" Lg.)
26	251581	1	Bushing



Item No.	Part No.	No. Req'd	Description
1	10008	2	Cap Screw (For PE302R-2, PE303R-2, & PE304R-2 only)
2	251599	1	Breather Filter Vent
3	251600	1	Handle Grip (For PE302R-2, PE303R-2, & PE304R-2 only)
4	350925	1	Filler Cap
5	309219	2	Trade Name Decal (For PE302R, PE303R, & PE304R)
	309221	2	Trade Name Decal (For PE302R-2, PE303R-2, & PE304R-2)
6	15911	14	Cap Screw (1/4-20 X 5/8 Lg.; Torque to 70 in. lbs. Note: On models with a one gallon reservoir, four of these mount the handle also [see back sheet 1 of 4].)
7	9584	1	Valve Assembly (For PE302R & PE302R-2; See Form No. 101239) Note: When ordering this valve also order (4) 10890 Cap Screws for mounting valve to pump.
	9520	1	Valve Assembly (For PE303R & PE303R-2; Apply Loctite #242 to threads of valve handle stem [both ends.] See Form No. 101377) Note: When ordering this valve also order (4) 11956 Cap Screws for mounting valve to pump.
	52516	1	Valve Assembly (For PE304R & PE304R-2; Apply Loctite #242 to threads of valve handle stem [both ends.] See Form No. 100623) Note: When ordering this valve also order (4) 11956 Cap Screws for mounting valve to pump.

**FINAL ASSEMBLY - TOP VIEW**

# BASIC PUMP ASSEMBLY

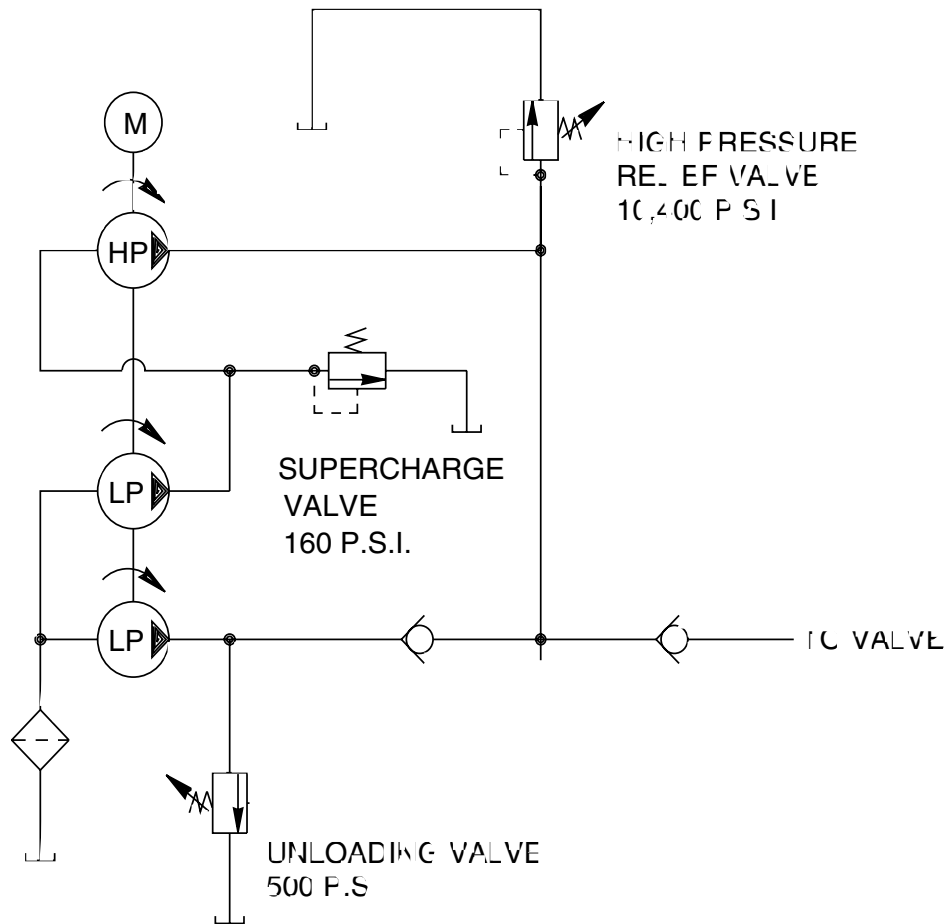


**BOTTOM VIEW AND SECTION A-A**

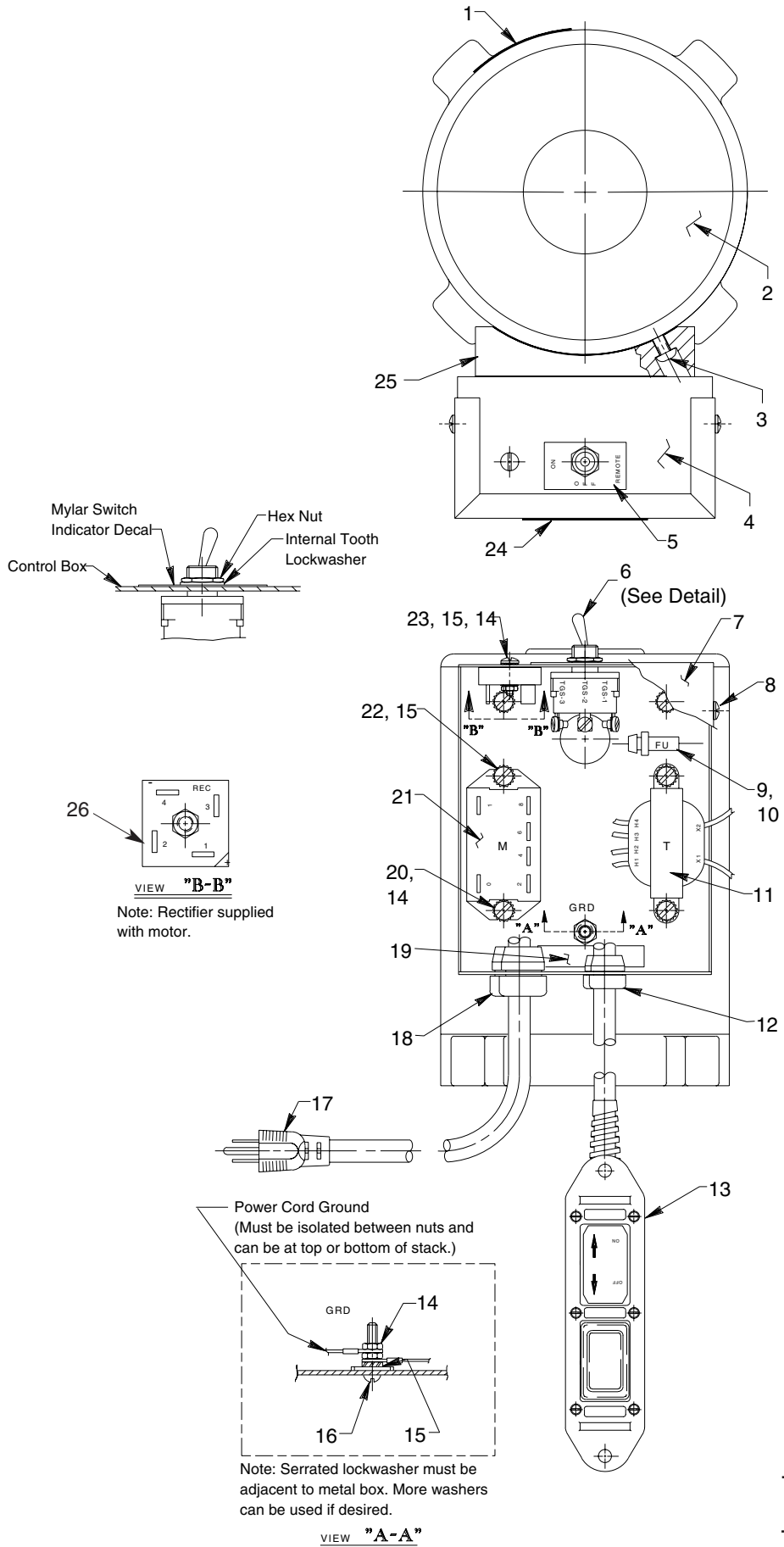
Item No.	Part No.	No. Req'd	Description	Item No.	Part No.	No. Req'd	Description
1	10022	2	Cap Screw (1/4-20 UNC X 1-1/2" Lg.; Torque to 60/80 in. lbs.)	12	45866	1	Block
2	58481	1	Gerotor Housing Bracket	13	12223	1	Ball (3/16 Dia.)
3	11461	1	Hose Clamp	14	10445	2	Compression Spring (5/32 O.D. X 3/4 Lg.)
4	21608	1	Filter	15	24549	2	Ball Guide
5	10890	2	Cap Screw (1/4-20 UNC X 2" Lg.; Torque to 60/80 in. lbs.)	16	14763	1	O-ring (7/16 X 5/16 X 1/16)
6	14440	1	90° Elbow Fitting	17	13229	1	Elbow
7	15279	1	O-ring (1/2 X 3/8 X 1/16)	18	250630	2	Drain Tube (For PE303R & PE303R-2)
8	15130	1	Plug (1/16 NPTF)		250630	1	Drain Tube (For PE302R, PE302R-2, PE304R & PE304R-2)
9	10265	1	O-ring (5/16 X 3/16 X 1/16)	19	251800	1	Elbow Fitting
10	45559	1	Block	20	304819	2	Hose Assembly
11	305526	1	High Pressure Piston				



### HYDRAULIC SCHEMATIC



# MOTOR CONTROL ASSEMBLY



# Parts List, Form No. 101450, Back sheet 4 of 5

Item No.	Part No.	No. Req'd	Description
1	351024	1	Decal
2	*420838BK2	1	Electric Motor (115 V.)
3	12316	2	Screw
4	58558BK2	1	Electrical Control Box
5	25802	1	Indicator Plate
6	12665	1	Toggle Switch
7	42576BK2	1	Control Box Cover
8	11141	4	Tap Screw (#6-20 X 3/8 Lg.)
9	252288	1	Fuse (15 AMP)
10	16887	1	Fuse Holder
11	251049	1	Transformer
12	15993	1	Strain Relief Bushing
13	25017	1	Hand Switch Assembly (See sheet 5 of 5)
14	10197	3	Nut (#10-24 UNC)

Item No.	Part No.	No. Req'd	Description
15	11108	8	Lockwasher (#10 External Tooth)
16	11856	1	Machine Screw (#10-24 X 1" Lg.)
17	25229	1	Cord Set (115 V.)
18	210112	1	Strain Relief Bushing
19	205189	1	Ground Decal
20	10164	2	Slotted Screw (#10-24 UNC X 3/8 Lg.)
21	251638	1	Relay
22	12909	4	Machine Screw
23	10167	1	Machine Screw (#10-24 UNC X 3/4 Lg.)
24	200188	1	Decal
25	420962	1	Mounting Adapter
26	251050	1	Rectifier



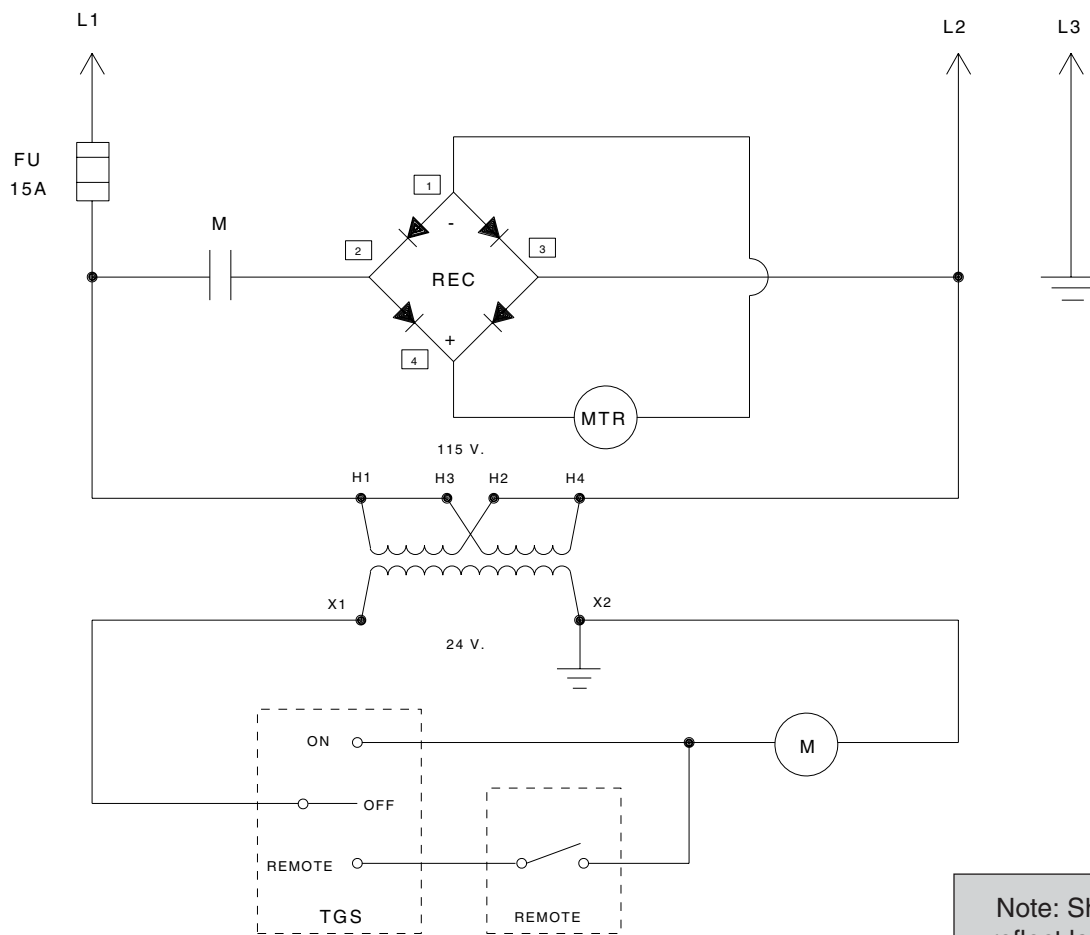
\* Note: For replacement brushes, order (2) #252958.

## ELECTRICAL SCHEMATIC

110/115 V., 50/60 Hz.



**WARNING:** To help prevent personal injury, all electrical work must be done by a qualified electrician.

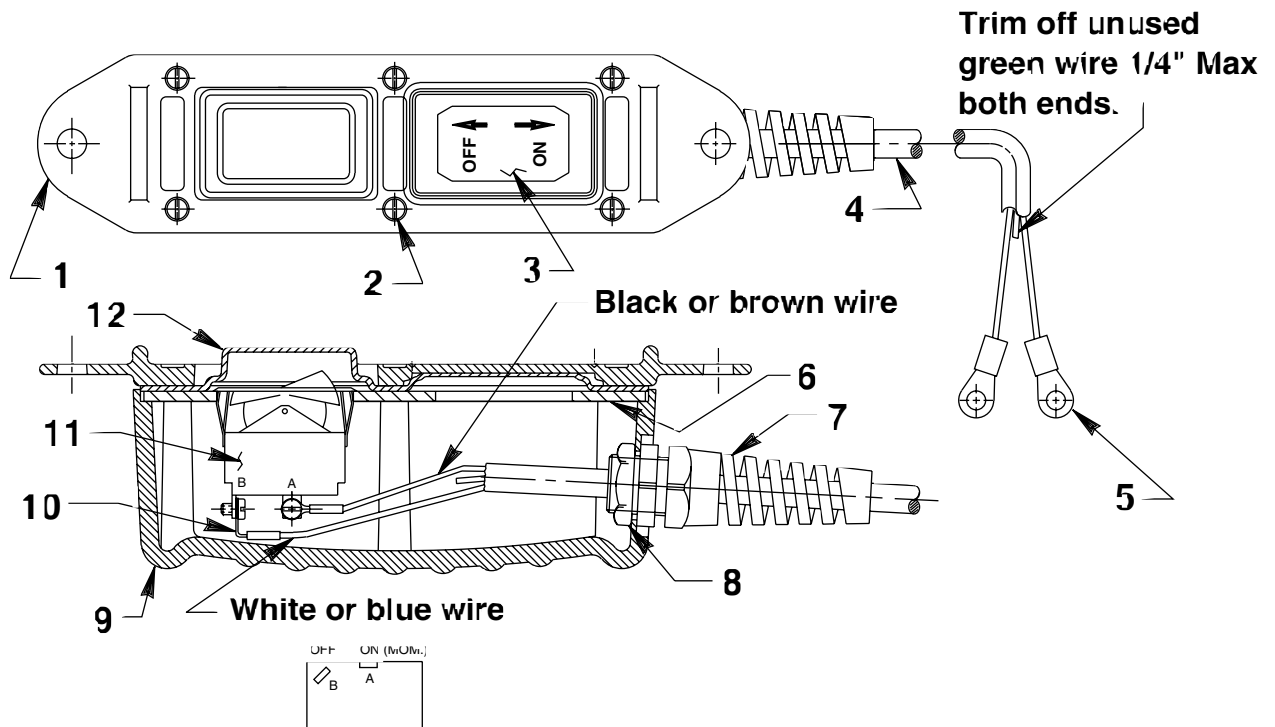


Note: Shaded areas reflect last revision(s) made to this form.



# REMOTE HAND SWITCH ASSEMBLY

No. 25017



Item No.	Part No.	No. Req'd	Description
1	420050-1	1	Cover
2	250248	6	Screw (4-24 x 3/4 Lg.)
3	202763	1	Decal
4	12908	11 ft.	Cable (18/3 SJTO)
5	10458	2	Ring Terminal
6	420050-3	1	Switch Mounting Plate
7	251818	1	Strain Relief Connector
8	251802	1	Locknut (3/4-16 UNF; Torque to 30/35 in. lbs.)
9	420050-4	1	Switch Housing
10	10525	2	Ring Terminal
11	16772	1	Rocker Switch
12	420050-2	1	Gasket

Refer to any operating instructions included with this product for detailed information about operation, testing, disassembly, reassembly, and preventive maintenance.

Items found in this parts list have been carefully tested and selected. **Therefore: Use only genuine Power Team replacement parts!**

Additional questions can be directed to our Technical Services Department.