

Parts List for:

PE302R-220
PE302R-2-220
PE303R-220

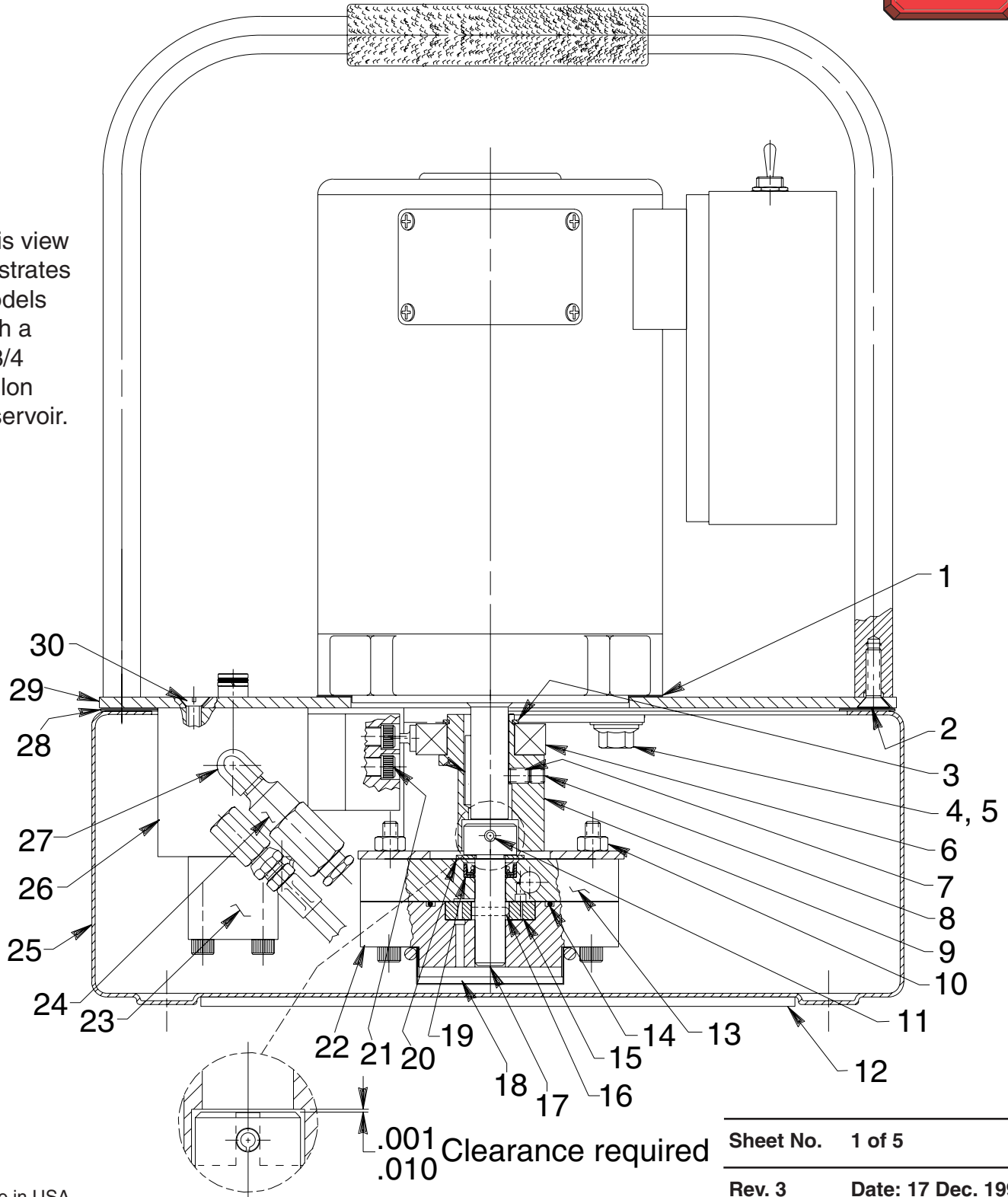
PE303R-2-220
PE304R-220
PE304R-2-220

ELECTRIC HYDRAULIC PUMP

Max. Capacity: 10,000 PSI



This view illustrates models with a 1-3/4 gallon reservoir.



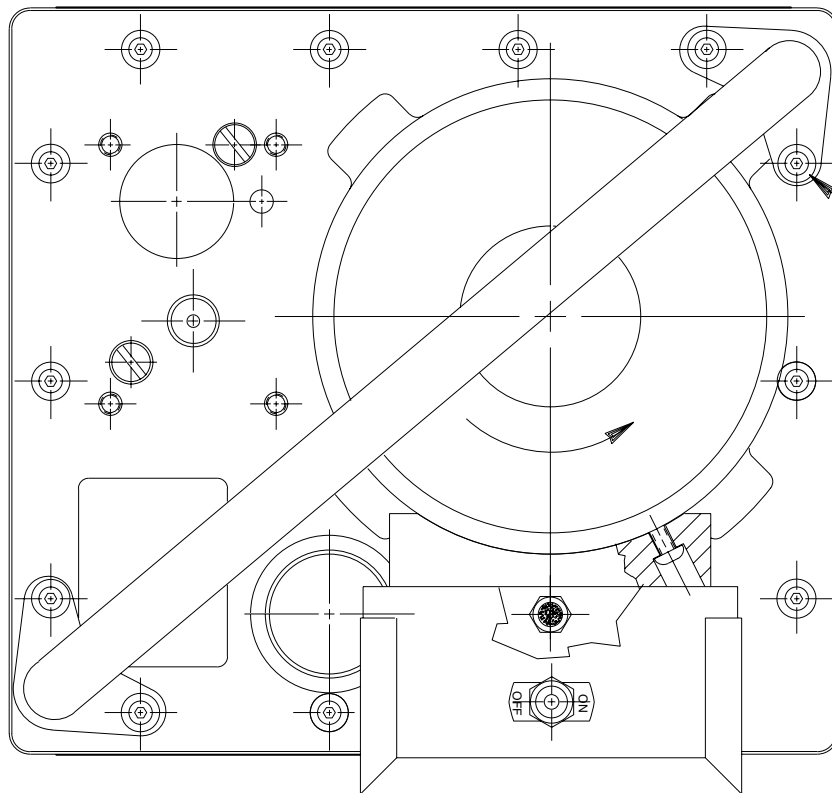
.001
.010 Clearance required

Sheet No. 1 of 5

Rev. 3

Date: 17 Dec. 1998

Parts List, Form No. 101451, Back sheet 1 of 5



31

This view illustrates the handle orientation, and its mounting, on models with a one gallon reservoir.

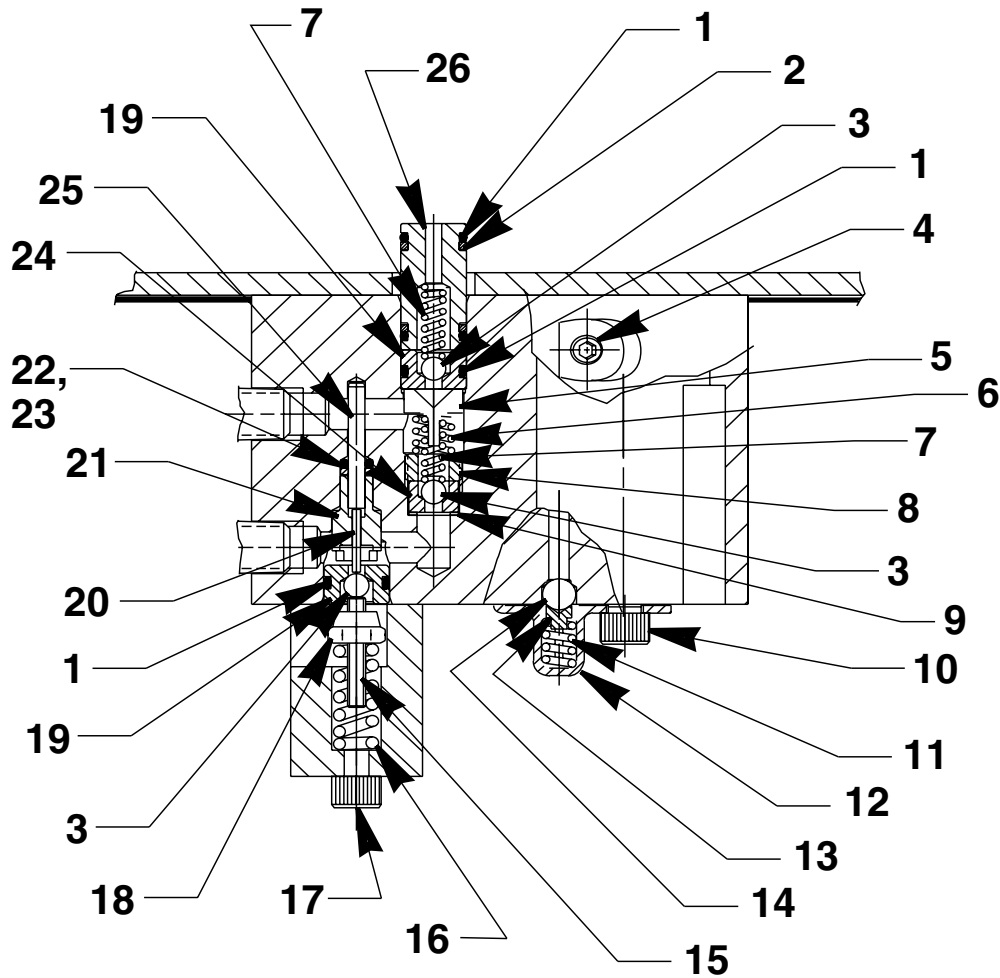
Item No.	Part No.	No. Req'd	Description
1	351060	1	Motor Base Gasket
2	11529	4	Cap Screw (1/4-20 UNC x 3/4 Lg.; Apply Loctite No. 242 or equiv. and torque to 60/80 in. lbs. For PE302R-2-220, PE303R-2-220 & PE304R-2-220)
3	209798	1	Retaining Ring
4	213663	4	Cap Screw (3/8-16 UNC X 1" Lg.)
5	10258	4	Washer (For 3/8 bolt)
6	209805	1	Ball Bearing
7	10136	1	Set Screw (1/4-20 UNC x 1/4 Lg.; Torque to 60/80 in. lbs.)
8	10519	1	Set Screw (1/4-20 UNC X 3/8 Lg.; Torque to 60/80 in. lbs.)
9	420840	1	Eccentric
10	10199	2	Hex Nut (1/4-20 UNC)
11	12298	1	Roll Pin (3/16 dia. x 1-1/2" Lg.)
12	420427	1	Rubber Pad (For PE302R-2-220, PE303R-2-220 & PE304R-2-220)
	420948	1	Rubber Pad (For PE302R-220, PE303R-220, & PE304R-220)
13	64623	1	Upper Gerotor Housing
14	10922	1	O-ring (2-1/8" X 1-15/16" X 3/32)
15	304826	1	Gerotor
16	209794	1	Gerotor Drive Pin
17	350940	1	Gerotor Shaft
18	21846	1	Filter Support
19	304830	1	Oil Seal
20	12595	1	Washer (1-1/8" X 1/2 X .077 Thk.)

Item No.	Part No.	No. Req'd	Description
21	10022	4	Screw (1/4-20 UNC X 1-1/2" Lg.; Torque to 190 in. lbs.)
22	64580	1	Gerotor Housing
23	350930	1	Retaining Block
24	21278	1	Relief Valve Assembly (Set at 10,100/10,700 PSI)
25	64665OR9	1	Reservoir (1 Gal. - For PE302R-220, PE303R-220, & PE304R-220)
	64241OR9	1	Reservoir (2 Gal. For PE302R-2-220, PE303R-2-220 & PE304R-2-220)
26	64612	1	Check Body
27	13229	1	Street Elbow
28	420931	1	Reservoir Gasket (For PE302R-220, PE303R-220, & PE304R-220)
	420424	1	Reservoir Gasket (For PE302R-2-220, PE303R-2-220 & PE304R-2-220)
29	64666BK2	1	Cover Plate (For PE302R-220, PE303R-220, & PE304R-220)
	64579BK2	1	Cover Plate (For PE302R-2-220, PE303R-2-220 & PE304R-2-220)
30	11529	2	Screw (1/4-20 UNC x 3/4 Lg.)
31	15911	4	Cap Screw (1/4-20 5/8 Lg.; Torque to 60/80 in. lbs. For PE302R-220, PE303R-220, & PE304R-220)



Note: Shaded areas reflect last revision(s) made to this form.

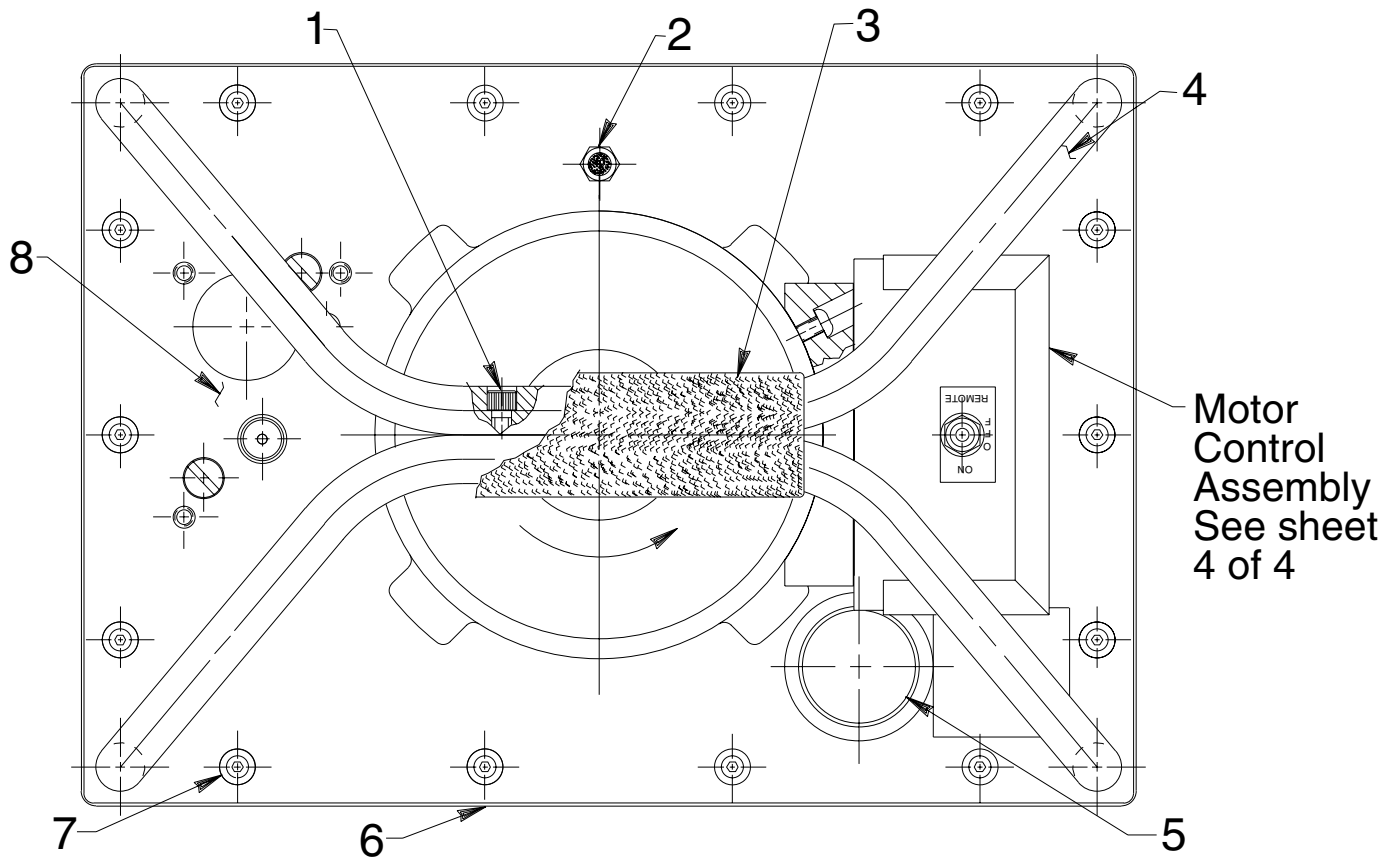
HIGH PRESSURE PUMP ASSEMBLY



Item No.	Part No.	No. Req'd	Description
1	10268	4	O-ring (1/2 X 3/8 X 1/16)
2	11863	2	Backup Washer (1/2 X 3/8 X 1/16)
3	12223	3	Ball (3/16 Dia.)
4	15130	1	Plug (1/16 NPTF)
5	251601	1	Outlet Ball Stop
6	10444	1	Compression Spring (3/16 I.D. X 13/32 Lg.)
7	10445	2	Compression Spring (5/32 O.D. X 3/4 Lg.)
8	209797	1	Hollow Lock Screw (7/16-20 UNF-3A; Torque to 110/130 in. lbs.)
9	10442	1	Washer (3/8 X 1/4 X 1/32)
10	10002	1	Cap Screw (1/4-20 UNC X 3/8 Lg.; Torque to 60/80 in. lbs.)
11	15691	1	Compression Spring (1/4 O.D. X 5/8 Lg.)

Item No.	Part No.	No. Req'd	Description
12	350577	1	Spring Retainer
13	200796	1	Adapter
14	10374	1	Steel Ball (7/32 Dia.)
15	251067	1	Set Screw (Unloading valve; #10-24 UNC x 1" Lg.)
16	14484	1	Compression Spring (3/8 O.D. X 1" Lg.)
17	10854	2	Cap Screw (1/4-20 UNC X 1-3/4" Lg.; Torque to 60/80 in. lbs.)
18	207405	1	Locknut (10-24 UNC)
19	251065	2	Replaceable Seat
20	251611	1	Dowel Pin (5/8 X 1/2 Lg.)
21	251068	1	Guide
22	17797	1	O-ring (1/4 X 1/8 X 1/16)
23	214992	1	Backup Ring (15/64 x 1/8 x 3/64)
24	209787	1	Replaceable Seat
25	16471	1	Dowel Pin (1/8 dia. x 1" Lg.)
26	251581	1	Bushing

TOP VIEW

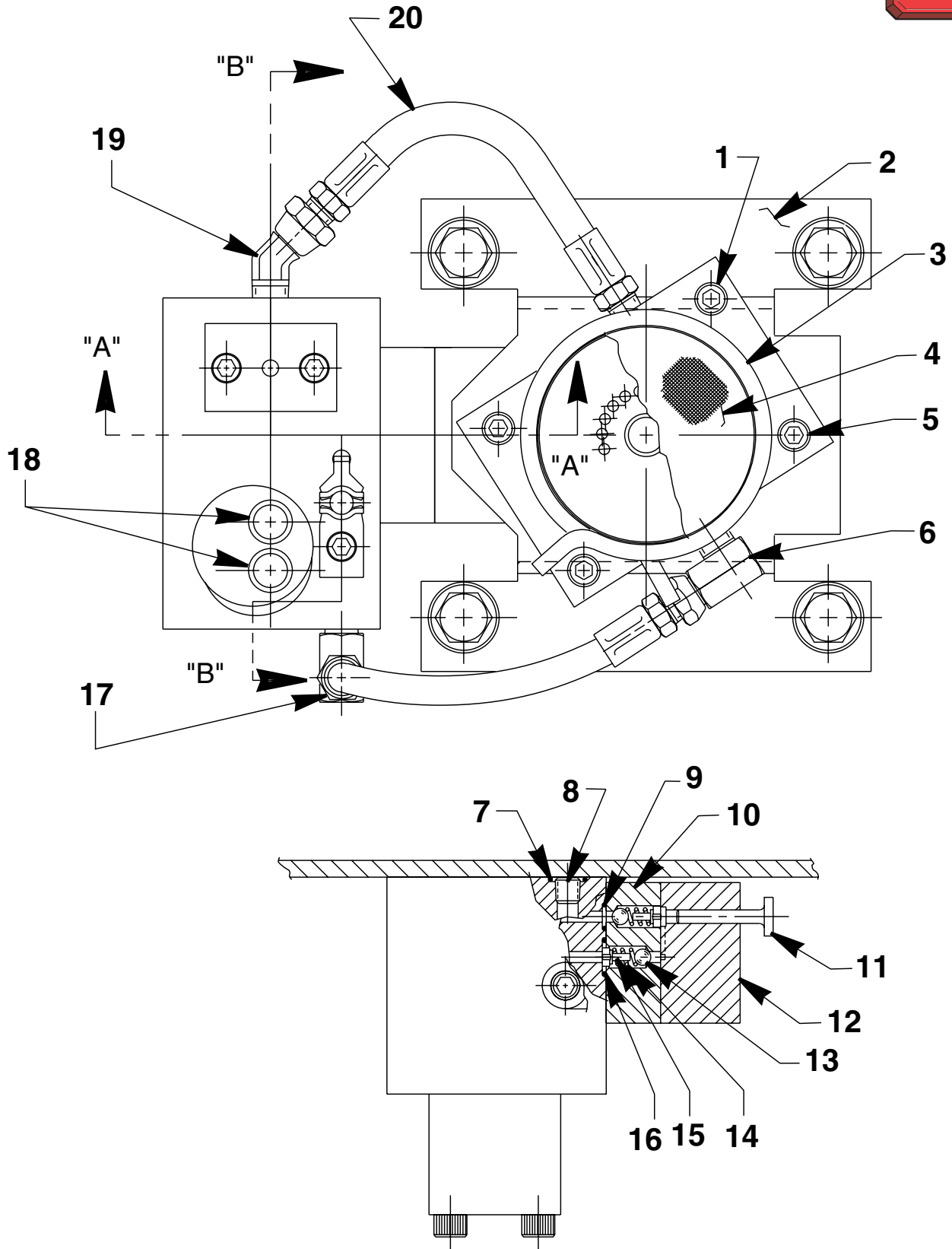


Item No.	Part No.	No. Req'd	Description
1	10008	2	Cap Screw (For PE302R-2-220, PE303R-2-220 & PE304R-2-220 only)
2	251599	1	Breather Filter Vent
3	251600	1	Handle Grip (For PE302R-2-220, PE303R-2-220 & PE304R-2-220 only)
4	64677BK2	1	Handle (For PE302R-220, PE303R-220, & PE304R-220)
	64582BK2	1	Roll Cage Frame (For PE302R-2-220, PE303R-2-220 & PE304R-2-220)
5	350925	1	Filler Cap
6	309219	2	Trade Name Decal (For PE302R-220, PE303R-220, & PE304R-220)
	309221	2	Trade Name Decal (For PE302R-2-220, PE303R-2-220 & PE304R-2-220)
7	15911	14	Cap Screw (1/4-20 X 5/8 Lg.; Torque to 60/80 in. lbs. Note: On models with a one gallon reservoir, four of these mount the handle also [see back sheet 1 of 4].)
8	9584	1	Valve Assembly (For PE302R-220 & PE302R-2-220; See Form No. 101239) Note: When ordering this valve also order (4) 10890 Cap Screws for mounting valve to pump.
	9520	1	Valve Assembly (For PE303R-220 & PE303R-2-220; Apply Loctite #242 to threads of valve handle stem [both ends.] See Form No. 101377) Note: When ordering this valve also order (4) 11956 Cap Screws for mounting valve to pump.
	52516	1	Valve Assembly (For PE304R-220 & PE304R-2-220; Apply Loctite #242 to threads of valve handle stem [both ends.] See Form No. 100623) Note: When ordering this valve also order (4) 11956 Cap Screws for mounting valve to pump.

Note: Shaded areas reflect last revision(s) made to this form.



BOTTOM VIEW AND SECTION A-A

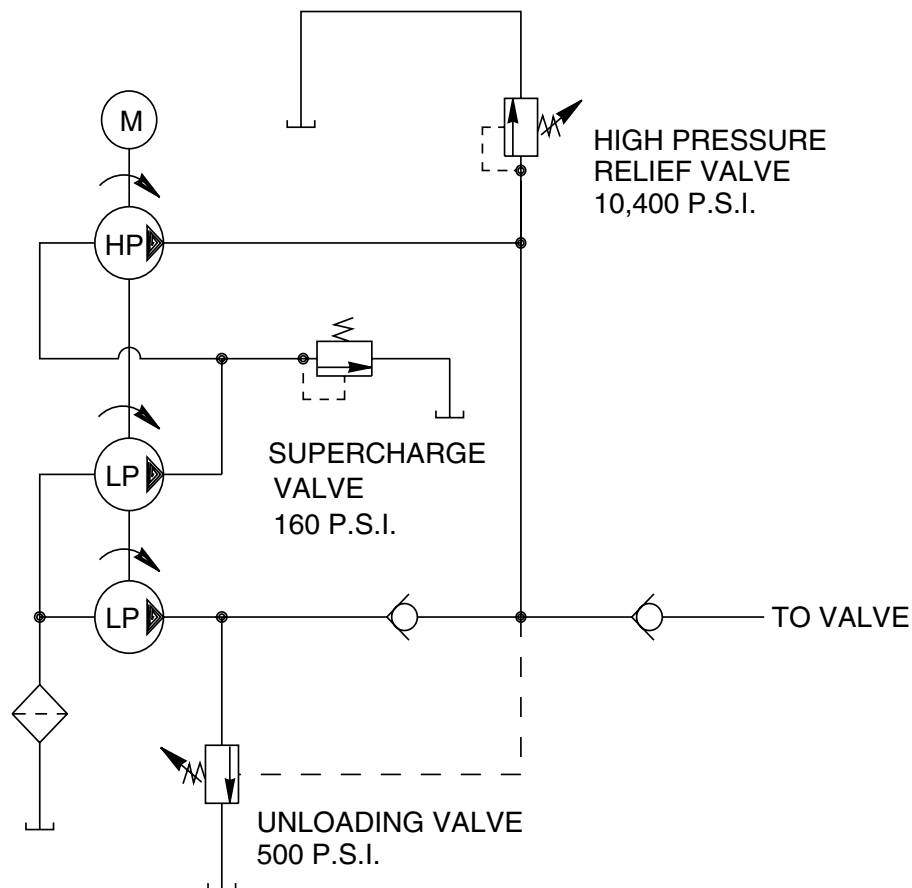


Item No.	Part No.	No. Req'd	Description
1	10022	2	Cap Screw (1/4-20 UNC X 1-1/2" Lg.; Torque to 60/80 in. lbs.)
2	58481	1	Gerotor Housing Bracket
3	11461	1	Hose Clamp
4	21608	1	Filter
5	10890	2	Cap Screw (1/4-20 UNC X 2" Lg.; Torque to 60/80 in. lbs.)
6	14440	1	90° Elbow Fitting
7	15279	1	O-ring (1/2 X 3/8 X 1/16)
8	15130	1	Plug (1/16 NPTF)
9	10265	1	O-ring (5/16 X 3/16 X 1/16)
10	45559	1	Block
11	305526	1	High Pressure Piston
12	45866	1	Block

Item No.	Part No.	No. Req'd	Description
13	12223	2	Ball (3/16 Dia.)
14	10445	2	Compression Spring (5/32 O.D. X 3/4 Lg.)
15	24549	2	Ball Guide
16	14763	1	O-ring (7/16 X 5/16 X 1/16)
17	13229	1	Elbow
18	250630	2	Drain Tube (For PE303R-220 & PE303R-2-220)
	250630	1	Drain Tube (For PE302R-220, PE302R-2-220, PE304R-220 & PE304R-2-220)
19	251800	1	Elbow Fitting
20	304819	2	Hose Assembly

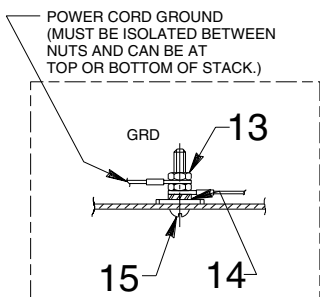
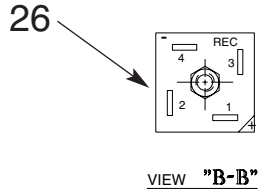
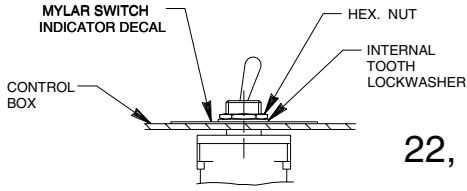
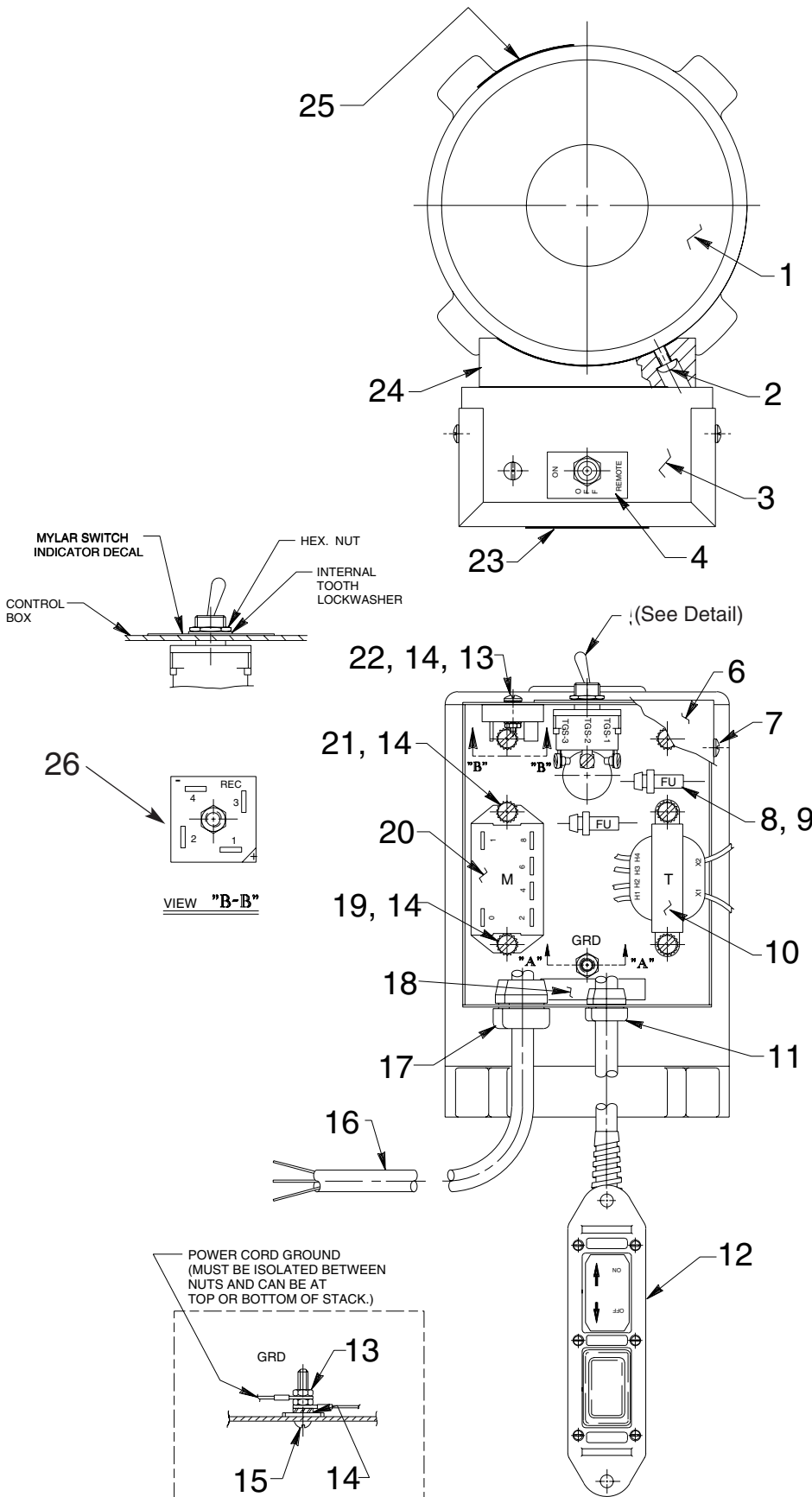


HYDRAULIC SCHEMATIC





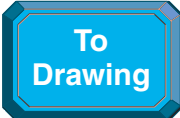
MOTOR & CONTROL ASSEMBLY
220/230 V., 50/60 Hz.



NOTE: SERRATED LOCK WASHER MUST BE ADJACENT TO METAL BOX. MORE WASHERS CAN BE USED IF DESIRED.
VIEW "A-A"

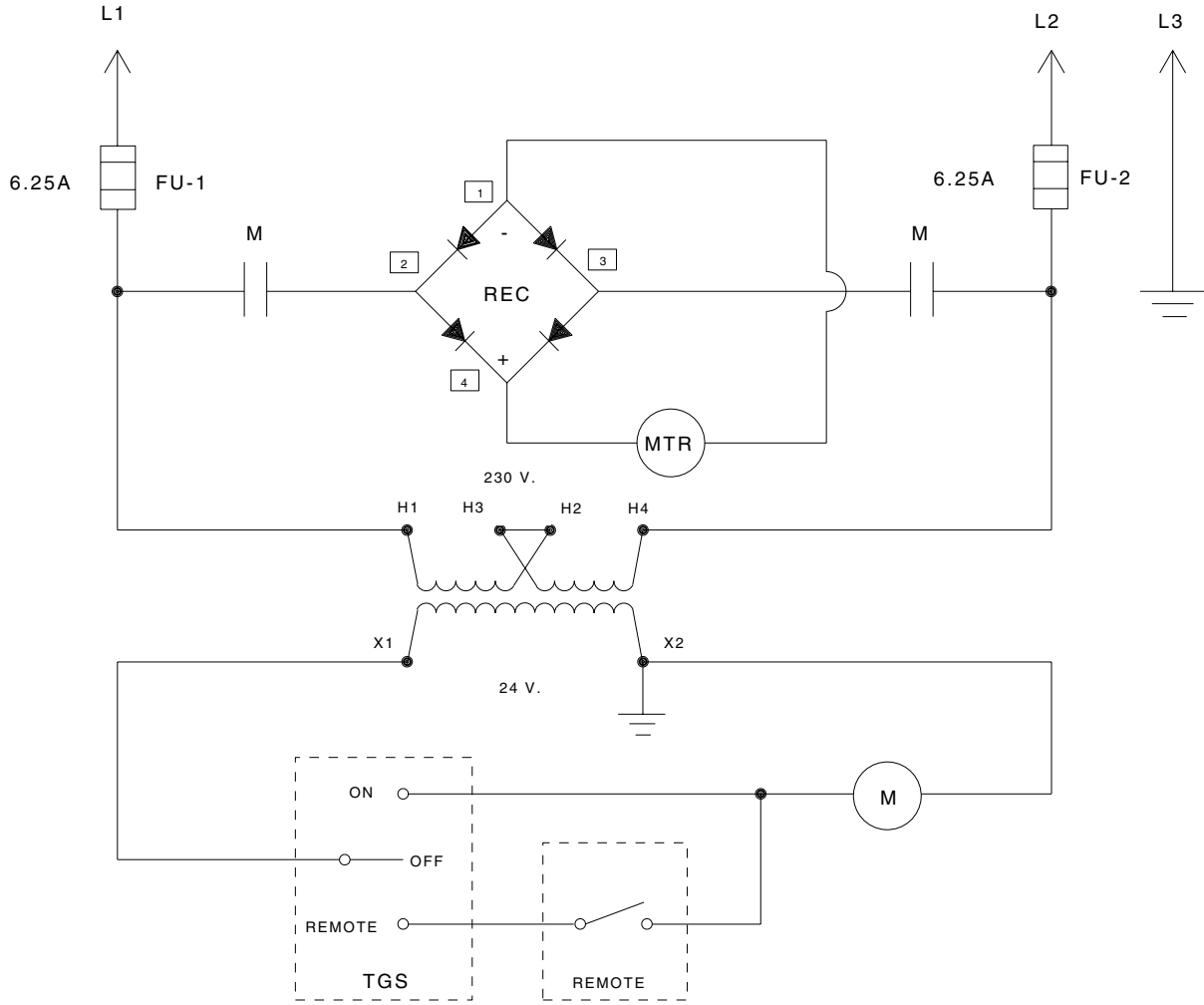
Parts List, Form No. 101451, Back sheet 4 of 5

Item No.	Part No.	No. Req'd	Description	Item No.	Part No.	No. Req'd	Description
1	*420839BK2	1	Electric Motor (230 V.)	15	11856	1	Machine Screw (#10-24 X 1" Lg.)
2	12316	2	Screw	16	308752	9 ft.	Electrical Cable (14/3 SJTO)
3	58558BK2	1	Electrical Control Box	17	210112	1	Strain Relief Bushing
4	25802	1	Indicator Plate	18	205189	1	Ground Decal
5	12665	1	Toggle Switch	19	10164	2	Slotted Screw (#10-24 UNC X 3/8 Lg.)
6	42576BK2	1	Control Box Cover	20	251638	1	Relay
7	11141	4	Screw (#6-20 X 3/8 Lg.)	21	12909	4	Machine Screw
8	250176	2	Fuse (6.25 AMP)	22	10167	1	Machine Screw (#10-24 UNC X 3/4 Lg.)
9	16887	2	Fuse Holder	23	200188	1	Decal
10	251049	1	Transformer	24	420962	1	Mounting Adapter
11	15993	1	Strain Relief Bushing	25	351024	1	Decal
12	25017	1	Hand Switch Assembly (See sheet 5 of 5)	26	251050	1	Rectifier
13	10197	2	Nut (#10-24 UNC)				
14	11108	8	Lockwasher (#10 External Tooth)				



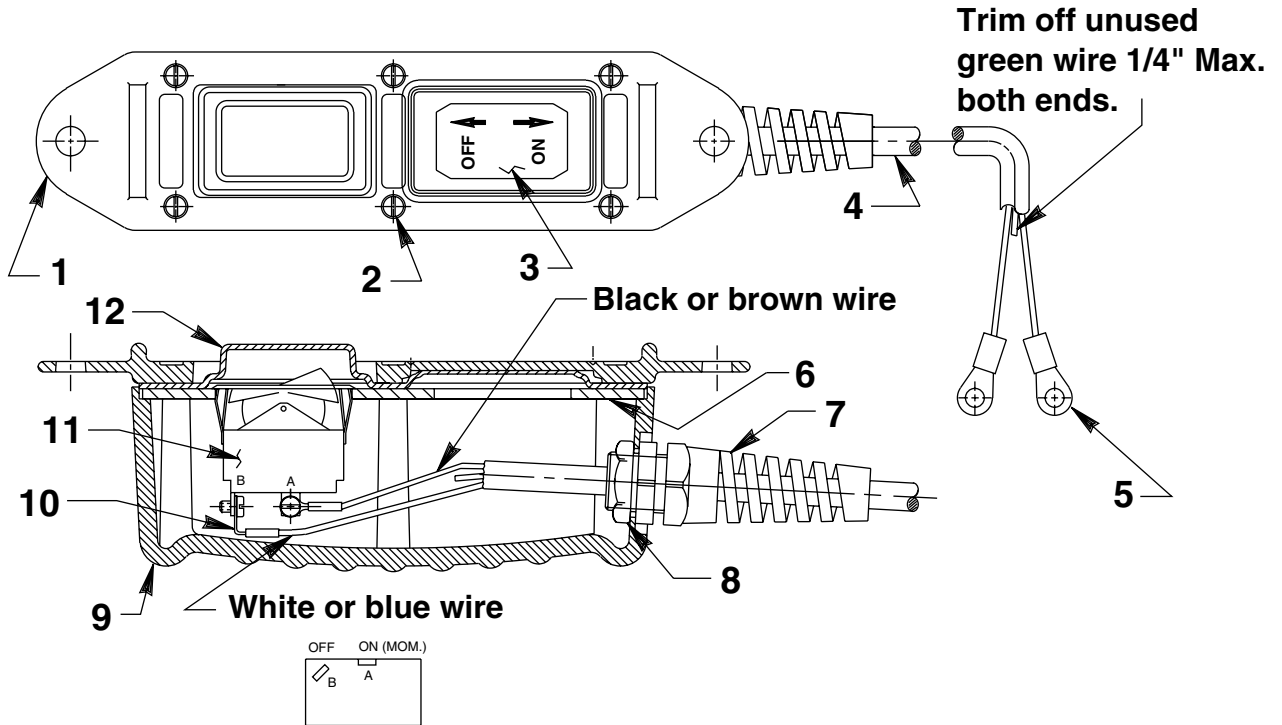
ELECTRICAL SCHEMATIC 220/230 V., 50/60 Hz.

WARNING: To help avoid personal injury, all electrical work must be done by a qualified electrician.



REMOTE HAND SWITCH ASSEMBLY

No. 25017



Item No.	Part No.	No. Req'd	Description
1	420050-1	1	Cover
2	250248	6	Screw (4-24 x 3/4 Lg.)
3	202763	1	Decal
4	12908	11 ft.	Cable (18/3 SJTO)
5	10458	2	Ring Terminal
6	420050-3	1	Switch Mounting Plate
7	251818	1	Strain Relief Connector
8	251802	1	Locknut (3/4-16 UNF; Torque to 30/35 in. lbs.)
9	420050-4	1	Switch Housing
10	10525	2	Ring Terminal
11	16772	1	Rocker Switch
12	420050-2	1	Gasket