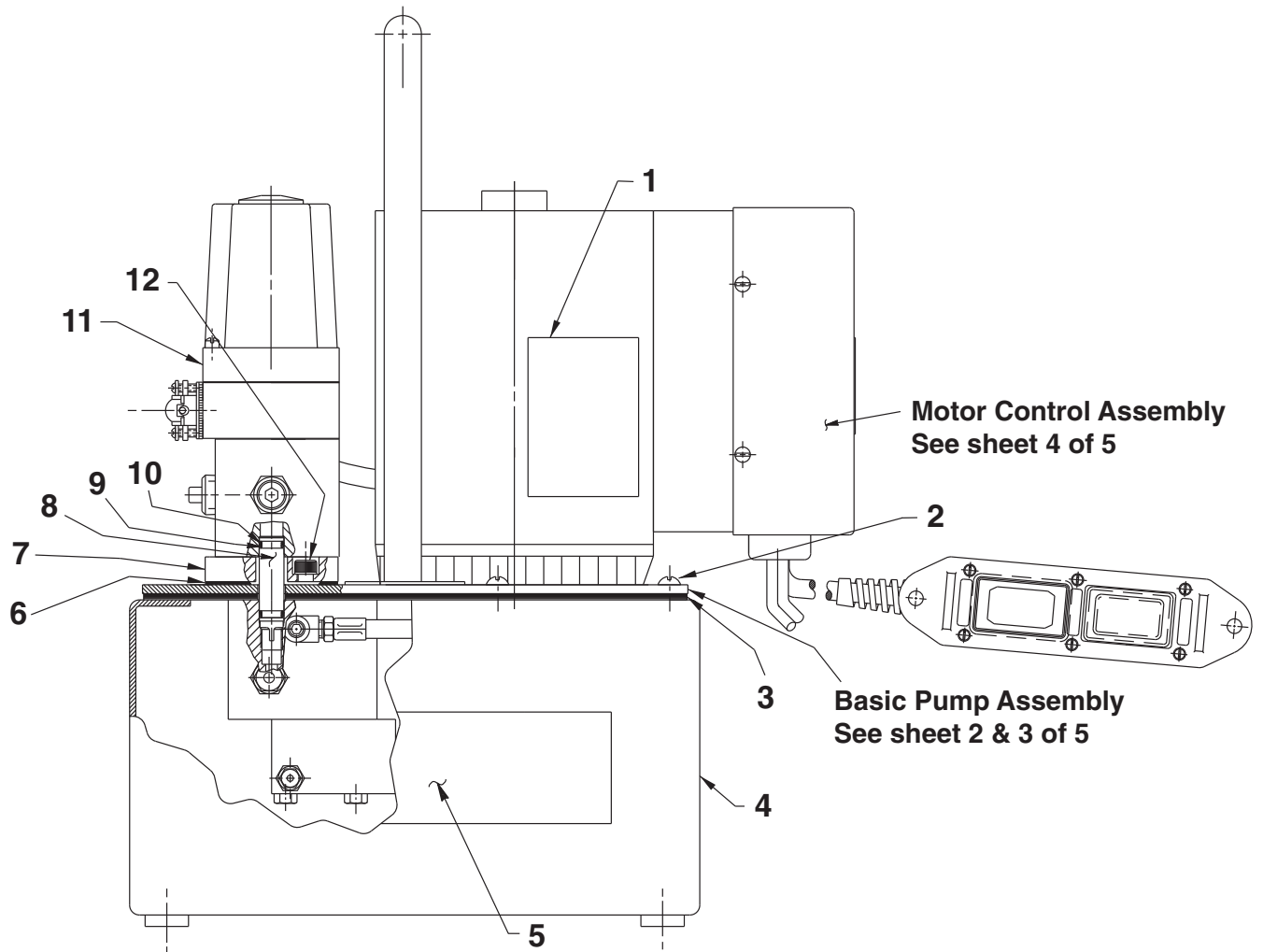


Parts List for:

PE172S
PE172S-50-220
PE172SM
PE172SM-50-220

ELECTRIC HYDRAULIC PUMP GENERAL SECTION



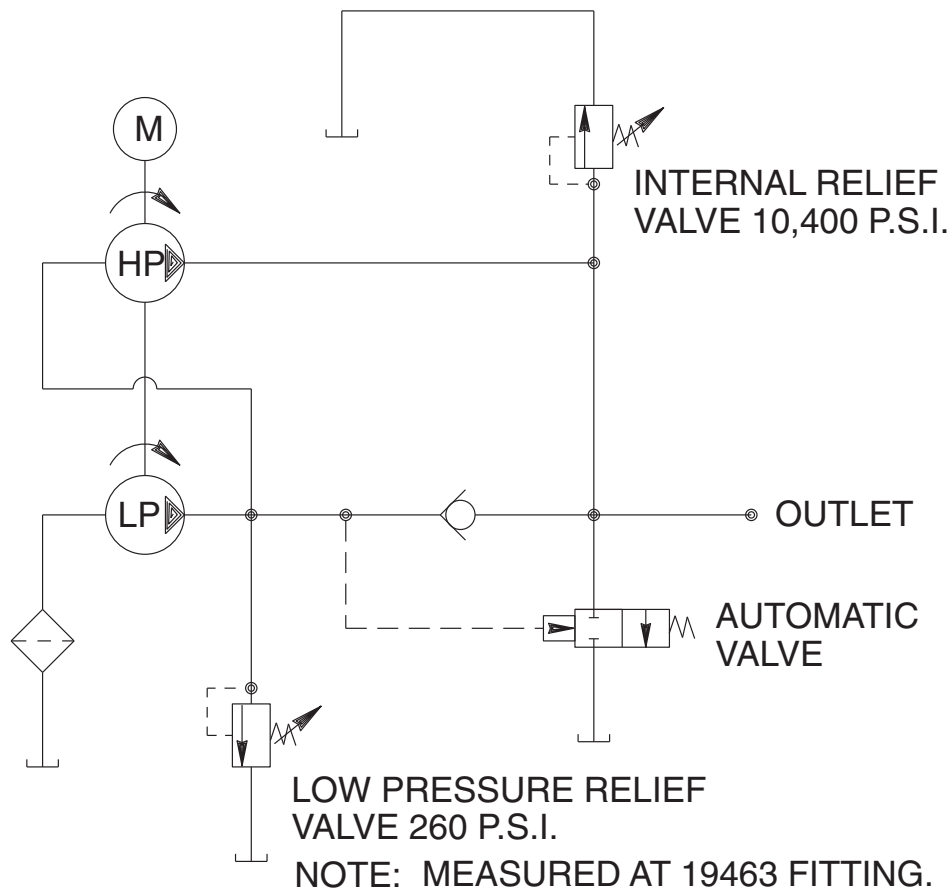
Item No.	Part No.	No. Req'd	Description
1	200188	1	Important Decal
2	10177	10	Machine Screw (1/4-20 UNC X 3/4 Lg.; For PE172SM & PE172SM-50-220)
	209799	14	Cap Screw (1/4-10 X 7/8 Lg. Self-tapping; Torque to 50/60 in. lb.s; For PE172S & PE172S-50-220)
3	40164	1	Cover Plate Gasket
4	64538OR9	1	Reservoir (Metal; For PE172SM & PE172SM-50-220)
	61165	1	Reservoir (Plastic; For PE172S & PE172S-50-220)
5	309219	2	Trade Name Decal
6	200395	1	Gasket
7	52165	1	Manifold
8	209809	1	Coupling
9	11863	2	Backup Washer (1/2 X 3/8 X 1/16)
10	10268	2	O-ring (1/2 X 3/8 X 1/16)
11	42621	1	Solenoid Valve (For PE172S & PE172SM; See Form No. 100445)
	44084	1	Solenoid Valve (For PE172S-50-220 & PE172SM-50-220; See Form No. 100445)
12	10030	2	Cap Screw (5/16-18 UNC X 3/4 Lg.; Torque to 220/240 in. lbs.)

PARTS INCLUDED BUT NOT SHOWN

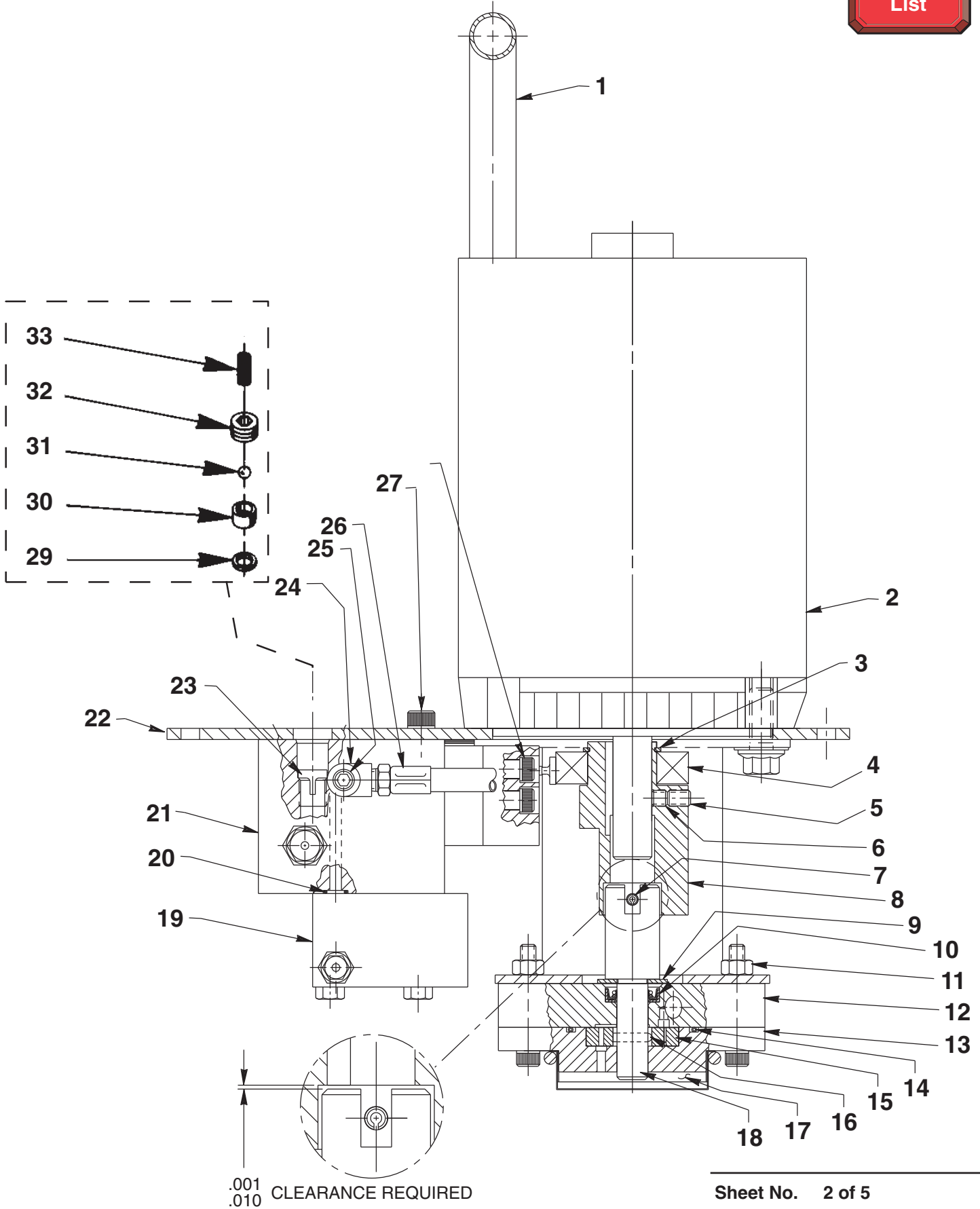
20937	1	Vent Cap
200415	1	O-ring (13/16 X 5/8 X 3/32)



HYDRAULIC SCHEMATIC



BASIC PUMP ASSEMBLY - SIDE VIEW



Item No.	Part No.	No. Req'd	Description
1	47492	1	Handle
2	58196WH2	1	Electric Motor (For PE1725 & PE1725M)
	58196	1	Electric Motor (For PE1725-50-220 & PE1725M-50-220)
3	209798	1	Retaining Ring
4	209805	1	Ball Bearing
5	10519	1	Set Screw (1/4-20 UNC X 3/8 Lg.; Torque to 60/80 in. lbs.)
6	10136	1	Set Screw (1/4-20 UNC x 1/4 Lg.; Torque to 60/80 in. lbs.)
7	10973	1	Slotted Spring Pin (3/16 Dia. X 1-1/4 Lg.; Note: Locate slot as shown.)
8	45596	1	Eccentric
9	12595	1	Washer
10	304830	1	Oil Seal
11	10199	2	Hex Nut (1/4-20 UNC)
12	61170	1	Housing
13	61169	1	Lower Gerotor Housing
14	10922	1	O-ring (2-1/8 X 1-15/16 X 3/32)
15	304826	1	Gerotor Set
16	209794	1	Gerotor Drive Pin
17	21846	1	Filter Support
18	304835	1	Drive Shaft
19	52167	1	Block
20	10266	1	O-ring (3/8 X 1/4 X 1/16)
21	61167	1	Check Body
22	61166BK2	1	Cover Plate
23	209795	1	Outlet Ball Stop
24	19463	1	Tee
25	10427	1	Pressure Plug (1/8 NPTF)
26	304819	1	Hose
27	10030	1	Cap Screw (5/16-18 UNC X 3/4 Lg.; Torque to 220/240 in. lbs.)
28	10022	4	Screw (1/4-20 UNC X 1-1/2 Lg.; Torque to 180/200 in. lbs.)
29	*10442	1	Copper Washer (1/4 Bolt)
30	*209787	1	Replaceable Seat
31	*12223	1	Steel Ball (3/16 Dia.)
32	209797	1	Hollow Lock Screw (7/16-20 UNF-3A; Torque to 110/130 in. lbs.)
33	*211797	1	Compression Spring (5/32 O.D. X 5/8 Lg.)

PARTS INCLUDED BUT NOT SHOWN

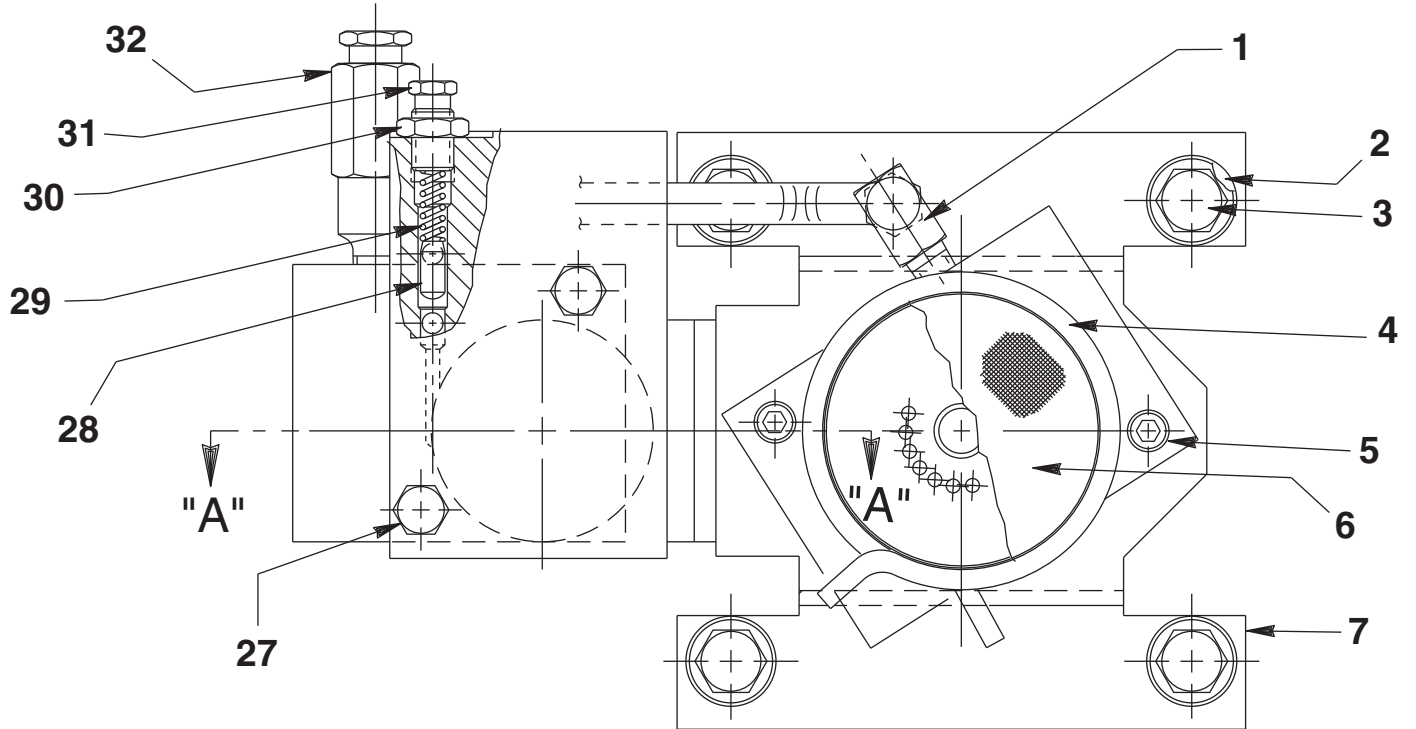
10009	2	Cap Screw (1/4-20 UNC X 3/4 Lg.; Torque to 60/80 in. lbs.)
11351	2	Washer (1/4 External Tooth)
10245	2	Washer (For 1/4 bolt)
10199	2	Hex Nut (1/4-20 UNC)

} For mounting pump handle

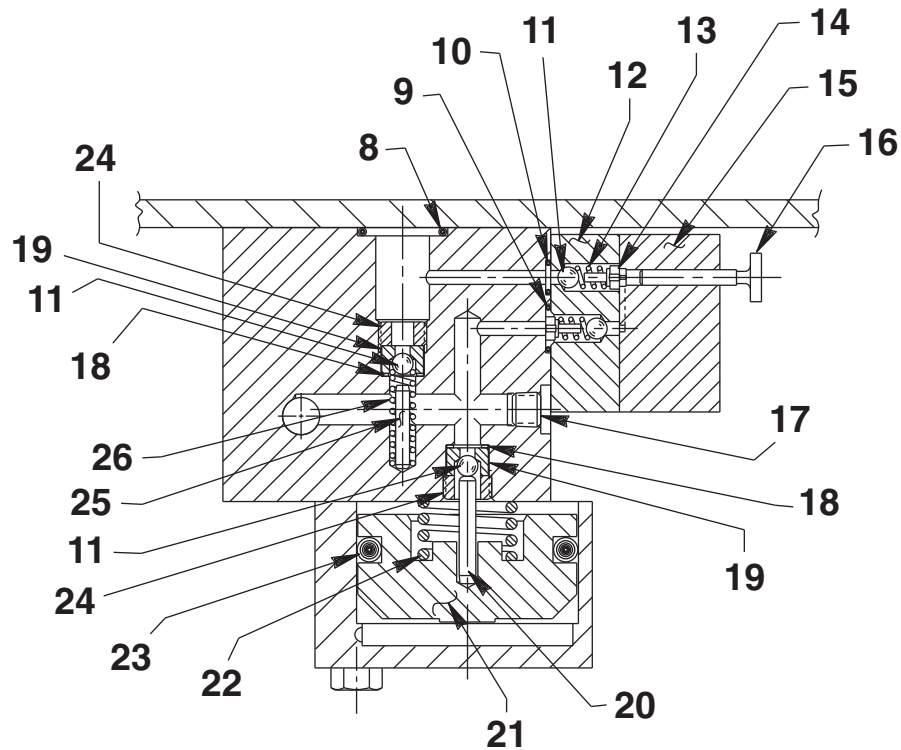


Part numbers marked with an asterisk (*) are contained in Repair Kit No. 300430.
 Part numbers marked with a dagger (†) are contained in EPR Seal Kit No. 300648.
 Part numbers marked with a bullet (•) are contained in Outlet Check Repair Kit No. 300606.

BASIC PUMP ASSEMBLY - BOTTOM VIEW & SECTION A-A



To Parts List



SECTION A-A

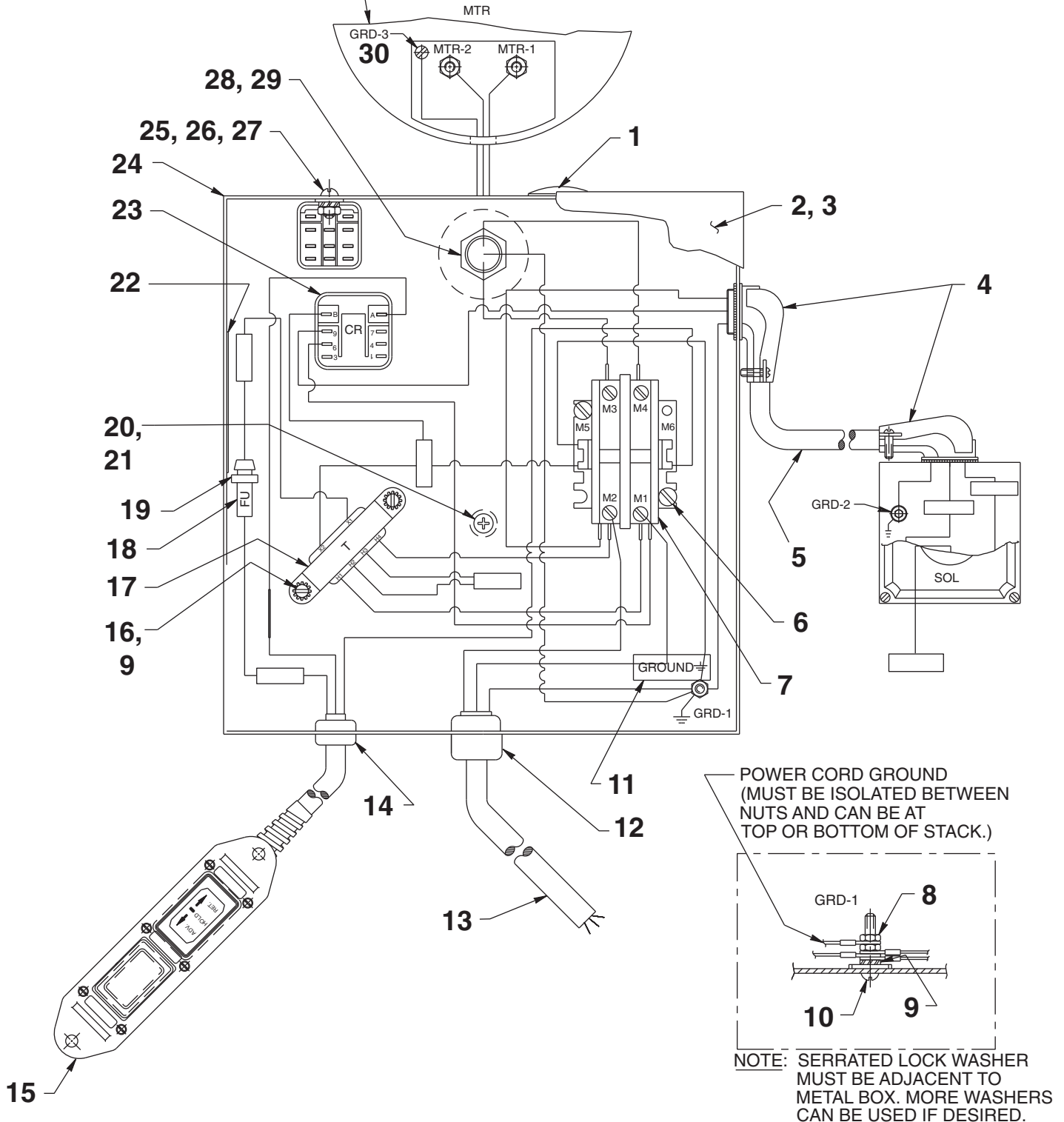
Item No.	Part No.	No. Req'd	Description
1	14440	1	90° Elbow Fitting
2	10258	4	Washer (For 3/8 bolt)
3	213663	4	Cap Screw (3/8-16 UNC X 1" Lg.; Torque to 230/250 in. lbs.)
4	11461	1	Hose Clamp
5	10854	2	Cap Screw (1/4-20UNC X 1-3/4Lg.; Torque to 60/80 in. lbs.)
6	21608	1	Filter
7	52174	1	Pump Mounting Bracket
8	10273	1	O-ring (13/16 X 5/8 X 3/32)
9	14763	1	O-ring (7/16 X 5/16 X 1/16)
10	10265	1	O-ring (5/16 X 3/16 X 1/16)
11	12223	4	Ball (3/16 Dia.)
12	45559	1	Block
13	10445	2	Compression Spring (5/32 O.D. X 3/4 Lg.)
14	24549	2	Ball Guide
15	45560	1	Block
16	304820	1	Piston
17	15130	1	Plug (1/16 NPTF)
18	10442	2	Washer (3/8 X 1/4 X 1/32)
19	209787	2	Replacement Seat
20	211843	1	Dowel Pin (3/16 Dia. X 1" Lg.; Note: Install with radius end out.)
21	46063	1	Piston
22	16346	1	Compression Spring (1" O.D. X 7/8 Lg.)
23	10283	1	O-ring (2" X 1-5/8 X 3/16)
24	209797	2	Hollow Lock Screw (7/16-20 UNF-3A)
25	12149	1	Pin (1/8 Dia. X 3/4 Lg.)
26	16057	1	Compression Spring (3/16 O.D. X 1" Lg.)
27	13037	2	Cap Screw (1/4-20 UNC X 2" Lg.; Torque to 40/50 in. lbs.)
28	15156	1	Pin (Note: Install tapered end toward spring.)
29	11221	1	Compression Spring (1/4 O.D. X 1" Lg.)
30	10386	1	Nut (3/8-24 UNF)
31	29786	1	Valve Adjusting Screw
32	21278	1	Relief Valve Assembly (Set at 10,100/10,700 PSI)



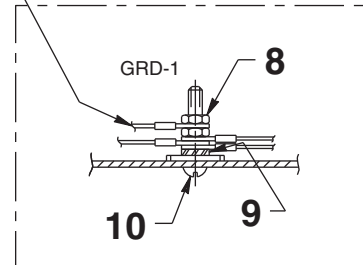
MOTOR CONTROL ASSEMBLY



FOR PROPER MOTOR VOLTAGE CONNECTION AND ROTATION SEE CONNECTION INFORMATION SUPPLIED WITH MOTOR.



POWER CORD GROUND (MUST BE ISOLATED BETWEEN NUTS AND CAN BE AT TOP OR BOTTOM OF STACK.)



NOTE: SERRATED LOCK WASHER MUST BE ADJACENT TO METAL BOX. MORE WASHERS CAN BE USED IF DESIRED.

Parts List, Form No. 101717, Back sheet 4 of 5

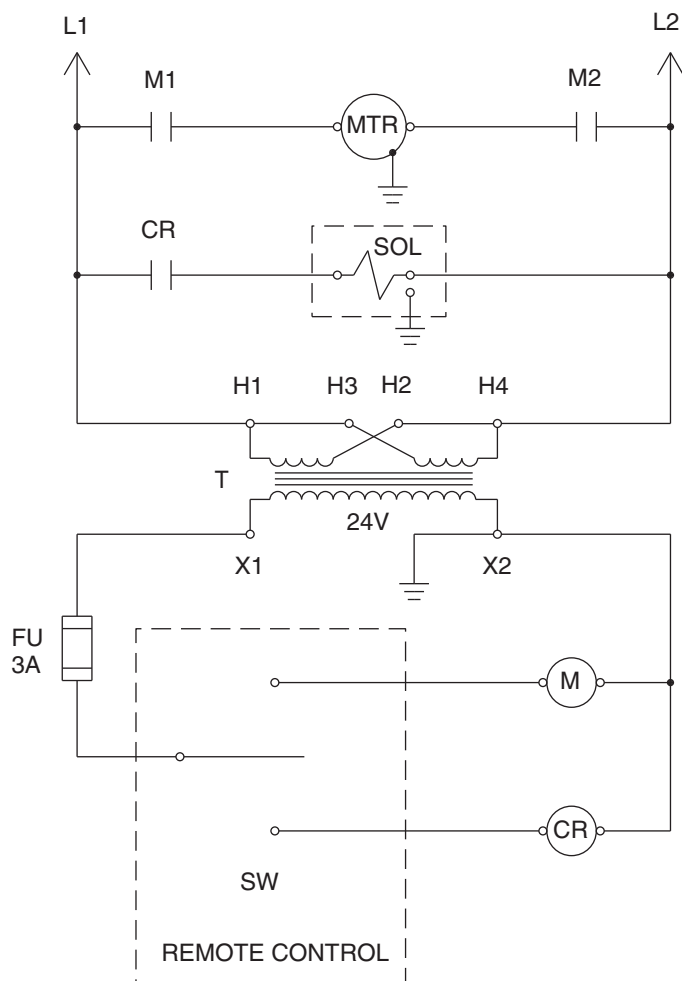
Item No.	Part No.	No. Req'd	Description
1	17782	1	Fuse Holder
2	43126WH2	1	Control Box Cover
3	200188	1	Warning Decal
4	11144	2	90° Elbow Connector
5	12293	2.33 ft.	Electrical Cable (16/3 SJTO)
6	10166	2	Screw (#10-24 UNC X 1/2 Lg.)
7	420718-4	1	Contactor
8	10197	2	Hex Nut (#10-24 UNC)
9	11108	3	Washer (#10 External Tooth)
10	11856	1	Screw (#10-24 X 1" Lg.)
11	205189	1	Ground Decal
12	210112	1	Strain Relief Bushing
13	24733	1	Cord Set (For PE172S & PE172SM)
	308752	8 ft.	Electrical Cable (For PE172S-50-220 & PE172SM-50-220)
14	15993	1	Strain Relief Bushing
15	307491	1	Remote Control Hand Switch Assembly (See sheet 5 of 5)

Item No.	Part No.	No. Req'd	Description
16	11539	2	Screw (#10-24 X 1/4 Lg.)
17	305665	1	Transformer
18	206962	1	Fuse (3 AMP, 250 V)
19	16887	1	Fuse Holder
20	13532	1	Screw (#8-32 X 3/8 Lg.)
21	206857	1	Special Washer
22	250150	1	Warning Decal
23	39092	1	Relay
24	51218WH2	1	Control Box
25	10159	2	Machine Screw (#6-32 UNC X 5/16 Lg.)
26	10195	2	Hex Nut (#6-32 UNC)
27	15906	2	Washer
28	11202	1	Nipple
29	212434	1	Washer
30	15468	1	Screw (#6-32 X 3/8 Lg.)



ELECTRICAL SCHEMATIC

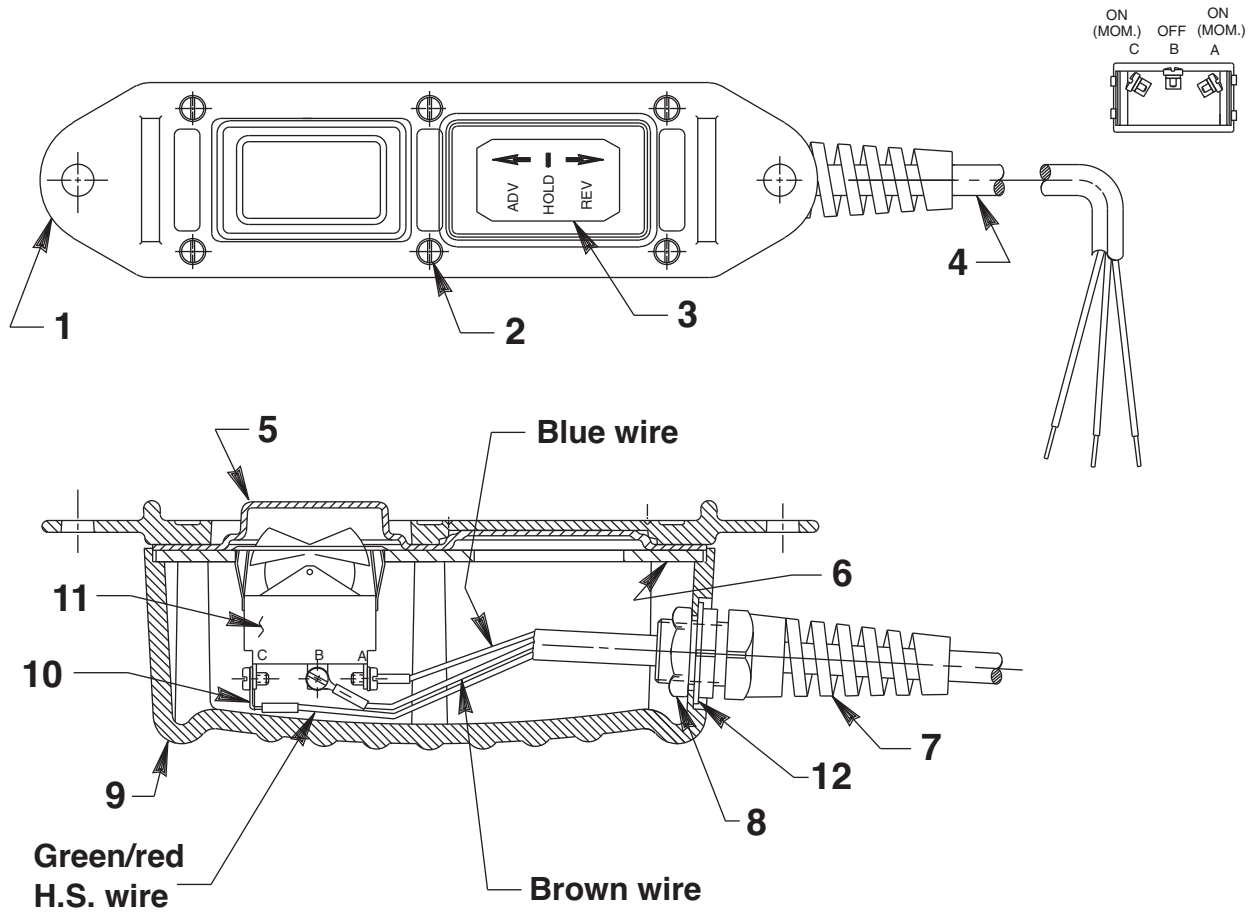
115/220 V., 50/60 Hz.



NOTE: UNLESS OTHERWISE SPECIFIED ALL UNITS ARE TO BE WIRED FOR 115 V. 60 HZ. (CCW ROTATION FROM LEAD END). TRANSFORMER CONNECTIONS ARE AS SHOWN FOR 115 V. 60 HZ. FOR 230 V. 60 HZ. UNITS, TRANSFORMER CONNECTIONS TO BE AS FOLLOWS:

H1 TO L1
H2 TO H3
H4 TO L2

REMOTE CONTROL HAND SWITCH ASSEMBLY (No. 307491)



Item No.	Part No.	No. Req'd	Description
1	420050-1	1	Cover
2	250248	6	Screw (4-24 x 3/4 Lg.)
3	202776	1	Decal
4	12293	25 ft.	Cable (16/3 SJTO)
5	420050-2	1	Gasket
6	420050-3	1	Switch Mounting Plate
7	251818	1	Strain Relief Connector
8	251802	1	Locknut (3/4-16 UNF; Torque to 30/35 in. lbs.)
9	420050-4	1	Switch Housing
10	12311	3	Ring Tongue Terminal
11	16773	1	Rocker Switch
12	253607	1	Gasket