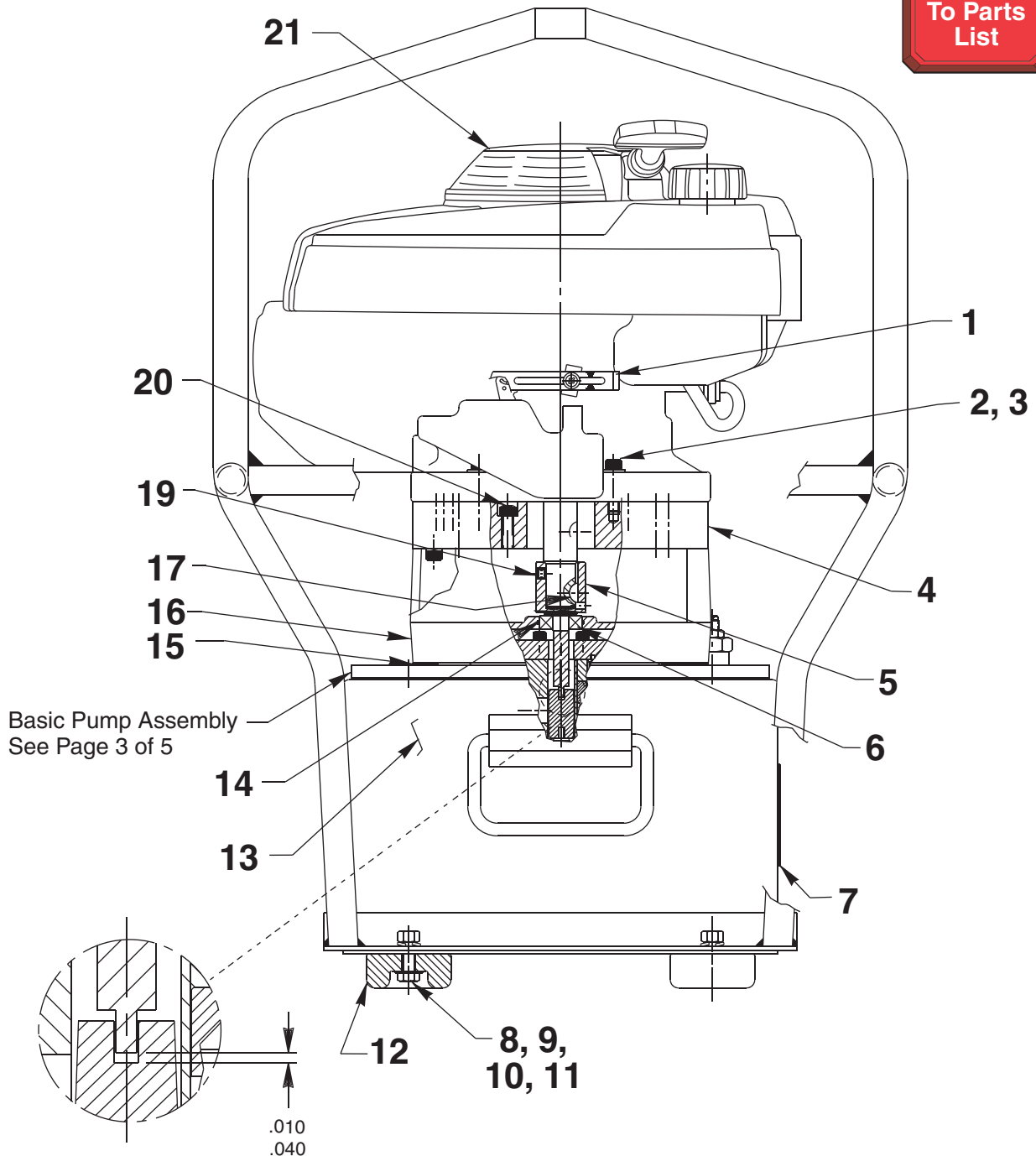


Parts List for:

PG1204S
PG1204S-CCL

GAS HYDRAULIC PUMP

Max. Capacity: 10,000 PSI



(DISTANCE BETWEEN BOTTOM OF
420052 SHAFT ADAPTER AND
BOTTOM OF SLOT IN 251206.)

Sheet No. 1 of 5

Rev. 3

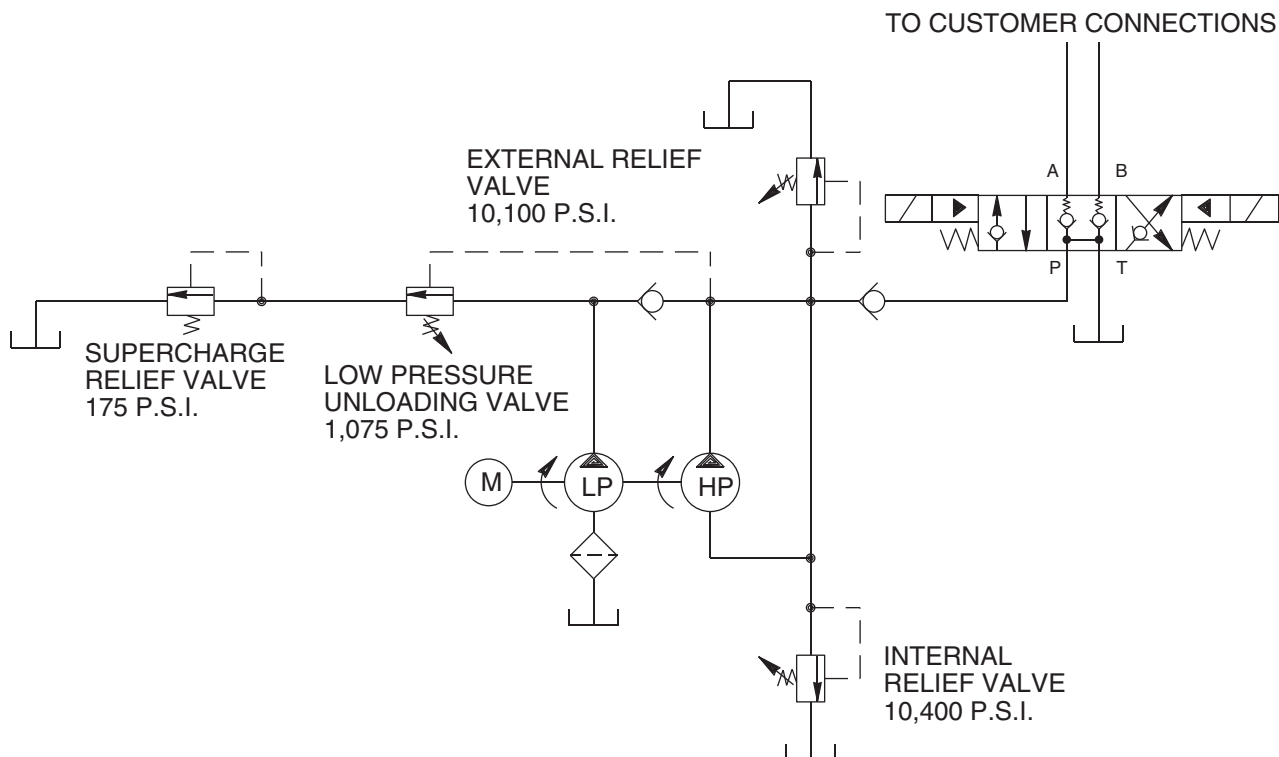
Date: 29 April 2009

Item No.	Part No.	No. Req'd	Description
1	17596	1	Slide Control
2	10948	3	Screw (5/16-18 UNC X 1-1/2 Lg.)
3	10257	3	Washer (For 5/16 bolt)
4	420200	1	Mounting Plate
5	420052	1	Shaft Extension
6	10439	1	Ball Bearing
7	309221	2	Trade Name Decal
8	10052	4	Cap Screw (3/8-16 UNC X 1-1/4 Lg.)
9	10258	4	Washer (For 3/8 bolt)
10	10247	4	Lockwasher (For 3/8 bolt)
11	10204	4	Hex Nut (3/8-16 UNC)
12	250354	4	Rubber Bumper
13	40137OR9	1	Reservoir
14	15124	1	O-ring (1-3/8 X 1-1/4 X 1/16)
15	40987	1	Reservoir Gasket
16	50384WH2	1	Mounting Engine Plate
17	10945	1	Woodruff Key
19	10556	1	Set Screw (1/4-20 UNC X 1/4 Lg.)
20	250427	4	Screw (5/16-18 UNC x 1/2 Lg.)
21	420416	1	Gas Engine (5.5 HP)



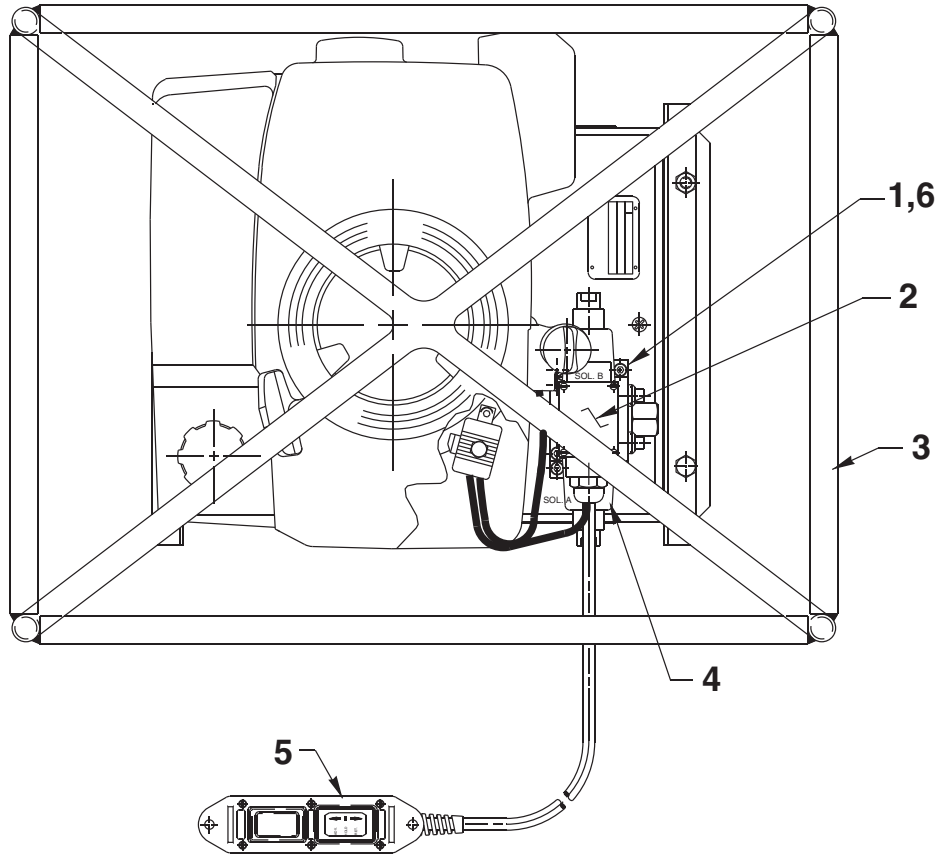
PARTS INCLUDED BUT NOT SHOWN

200609	1	Drain Tube
--------	---	------------

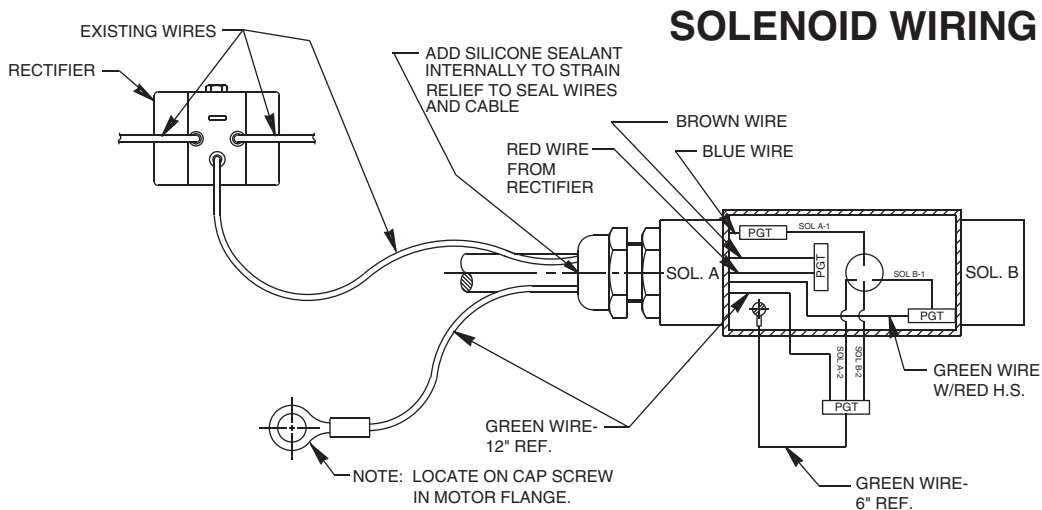


HYDRAULIC SCHEMATIC

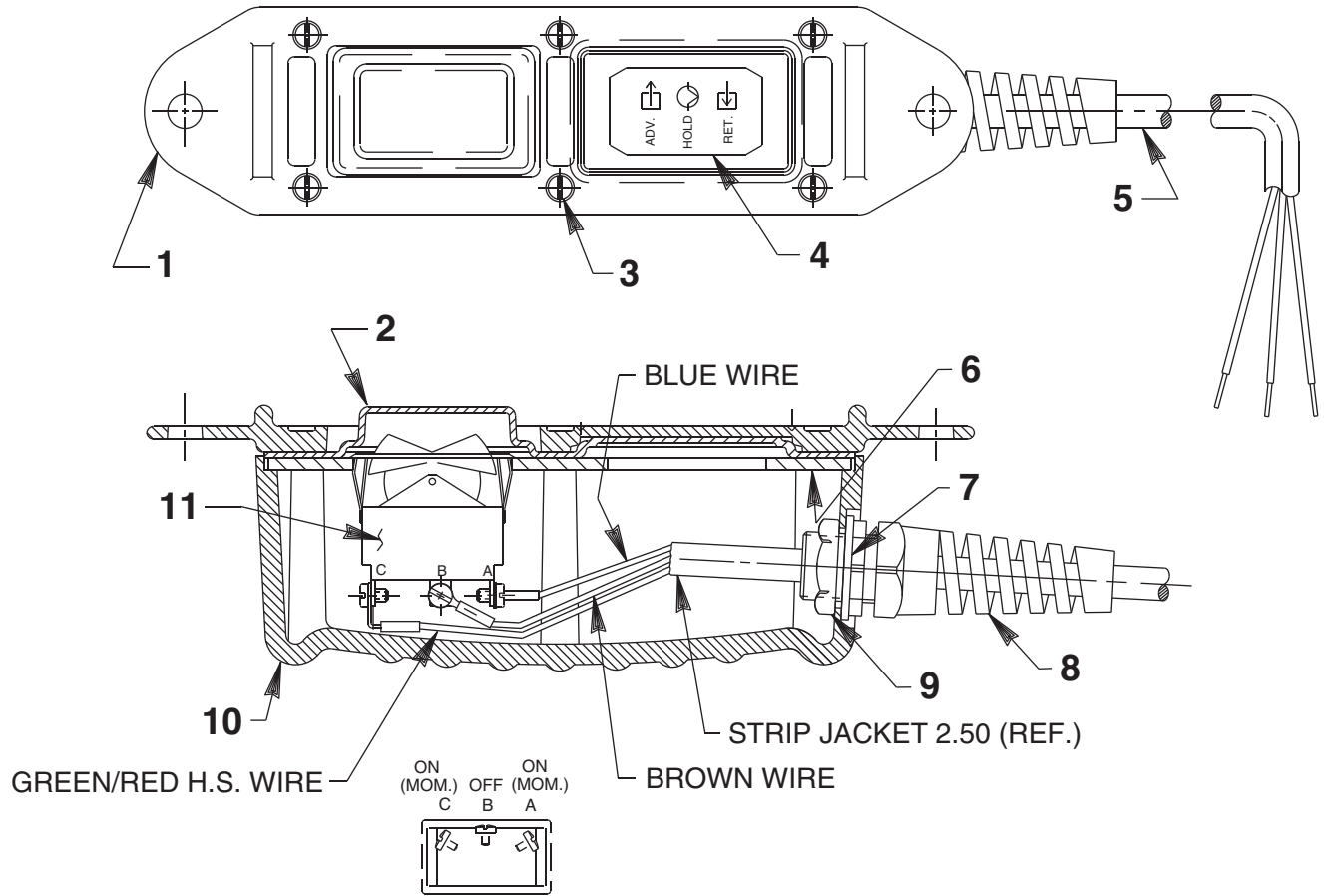
TOP VIEW



Item No.	Part No.	No. Req'd	Description
1	65008	1	Solenoid Valve (4-way; See Form No. 101653)
2	420417	1	Solenoid Valve (12 VDC)
3	64121BK2	1	Frame Weldment
4	216666	1	Strain Relief Bushing
5	351454	1	Hand Control Assembly (See back sheet 2 of 5)
6	200395	1	Valve Gasket



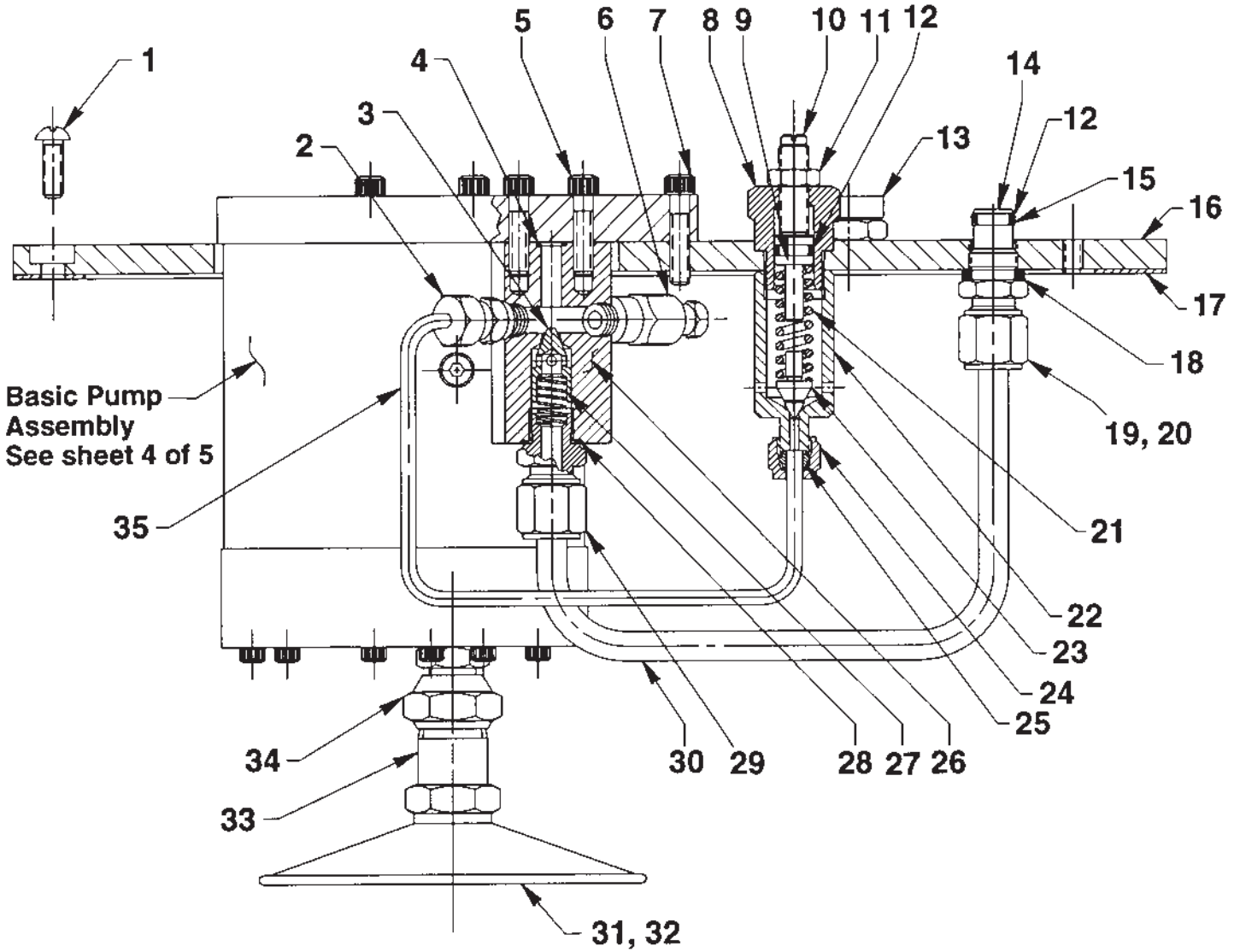
#351454 REMOTE CONTROL ASSEMBLY



Item No.	Part No.	No. Req'd	Description
1	420050-1	1	Plastic Cover
2	420050-2	1	Gasket
3	250248	6	Screw (4-24 x 3/4 Lg.)
4	202776	1	Decal
5	251879	25 ft.	Electrical Cable
6	420050-3	1	Switch Mounting Plate
7	253607	1	Rubber Seal
8	251818	1	Strain Relief Bushing
9	251802	1	Locknut (3/4-16 UNF; Torque to 30 in. lbs.)
10	420050-4	1	Switch Housing
11	16773	1	Rocker Switch



GENERAL PUMP ASSEMBLY



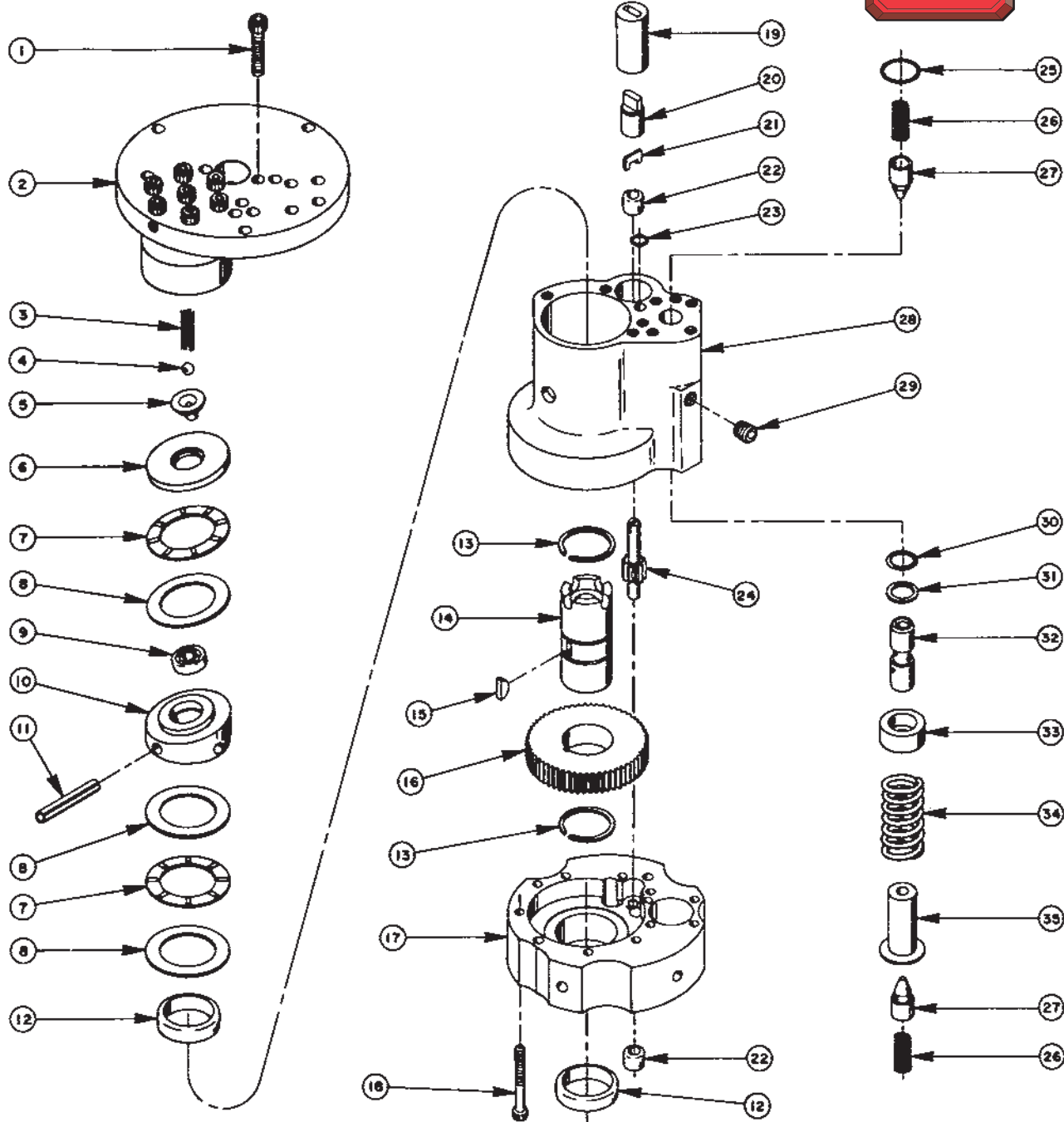
Parts List, Form No. 101821, Back sheet 3 of 5

Item No.	Part No.	No. Req'd	Description
1	10177	10	Machine Screw (1/4-20 UNC x 3/4 Lg.)
2	11173	1	Fitting
3	20771	1	Poppet
4	10266	1	O-ring (3/8 x 1/4 x 1/16)
5	10015	2	Soc. Hd. Cap Screw (1/4-28 UNF x 1" Lg.)
6	21278	1	Relief Valve (Set at 10,100/10,700 PSI)
7	10016	3	Cap Screw (1/4-20 UNC X 1" Lg.)
8	21305	1	Valve Cap
9	21306	1	Spring Guide
10	22362	1	Valve Adjusting Screw (Set at 10,000/10,200 PSI)
11	10386	1	Hex Nut (3/8-24 UNF)
12	10268	2	O-ring
13	20937	1	Filler/Breather Cap
14	20787	1	Valve Connector
15	11863	1	Backup Washer (11/16 x 1/2 x .048)
16	50058WH2	1	Cover Plate
17	58506	1	Reservoir Gasket
18	21484	1	Washer
19	10430	2	Tube Sleeve
20	10431	2	Tube Nut
21	10495	1	Compression Spring (.450 x 1-5/8 Lg.)
22	22361	1	External Pressure Valve Body
23	21046	1	Valve Stem
24	11342	1	Tube Nut
25	11174	1	Tube Sleeve
26	20776	1	Outlet Check Body
27	10425	1	Compression Spring (3/8 O.D. x 3/4 Lg.)
28	10261	1	Copper Washer
29	20770	1	Valve Connector
30	21495	1	Oil Line Tube
31	21345	1	Filter Assembly (Includes o-ring, Item #32)
32	10266	1	O-ring (3/8 X 1/4 X 1/16)
33	22033	1	Suction Line
34	10528	1	Straight Fitting
35	22399	1	External Pressure Regulator Tube
36	200395	1	Gasket, Valve Base



BASIC PUMP ASSEMBLY

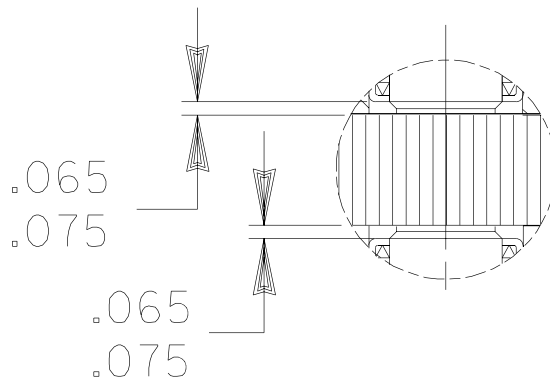
To Parts List



Item No.	Part No.	No. Req'd	Description
1	10020	9	Soc. Hd. Cap Screw (1/4-20 UNC x 1-1/4 Lg; Torque to 170/180 in. lbs.)
2	33114	1	High Pressure Pump Assembly (See sheet 5 of 5)
3	10361	1	Compression Spring (1/4 O.D. x 1" Lg.)
4	10375	1	Steel Ball (1/4 dia.)
5	23547	1	Bearing Top Plate
6	23548	1	Top Plate
7	11228	2	Thrust Bearing
8	11813	3	Bearing Race
9	11814	1	Ball Bearing
10	23549	1	Angle Plate
11	11955	1	Roll Pin (1/4 dia. x 3/4 Lg.)
12	11064	2	Needle Bearing
13	11261	2	Retaining Ring
14	23556	1	Shaft
15	11821	1	Woodruff Key
16	23557	1	Gear
17	30533	1	Pump End Plate
18	10001	12	Soc. Hd. Cap Screw (#10-32 UNF x 1-3/4 Lg.; Torque to 50 in. lbs.)
19	251206	1	Coupling
20	21092	1	Adapter
21	21093	1	Key
22	11199	2	Needle Thrust Bearing (See note below)
23	10266	1	O-ring (1/4 x 3/8 x 1/16)
24	21272	1	Drive Gear
25	10303	1	O-ring (3/4 x 7/8 x 1/16)
26	10425	2	Compression Spring (3/8 O.D. x 3/4 Lg.)
27	20771	2	Poppet
28	40120	1	Pump Body
29	10427	1	Pipe Plug (1/8 NPTF)
30	10271	1	O-ring (11/16 x 1/2 x 3/32)
31	12389	1	Teflon Backup Washer (11/16 x 1/2 x .048)
32	20849	1	Spool
33	23255	1	Spring Guide
34	10426	1	Compression Spring (1" O.D. x 1-13/16 Lg.)
35	23256	1	Spring Guide



NEEDLE BEARING INSTALLATION SPECIFICATIONS

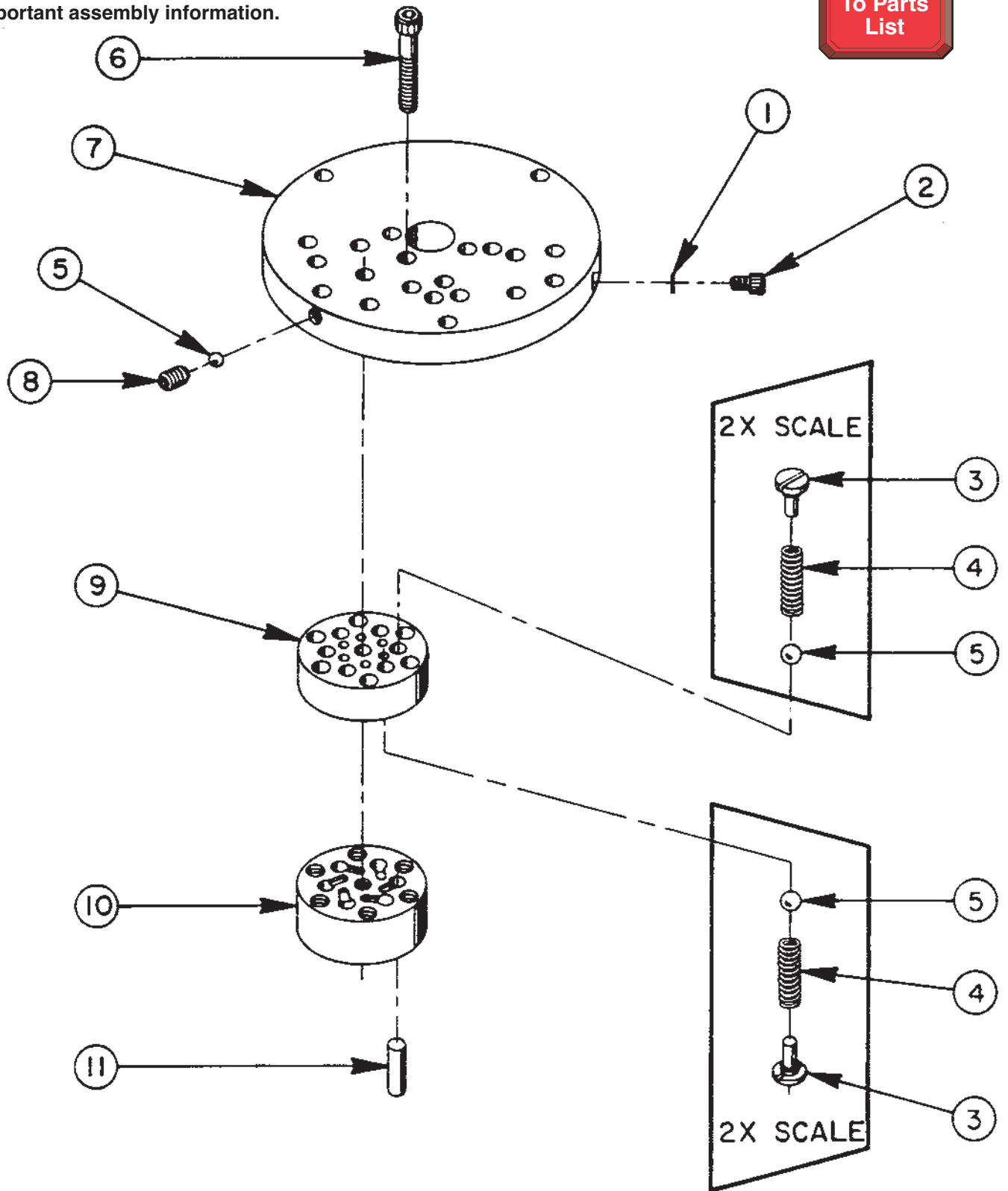


When replacing the needle bearings on the drive gear of the basic pump, the dimensions shown must be as specified.

HIGH PRESSURE PUMP ASSEMBLY

See diagram on reverse side for important assembly information.

To Parts List



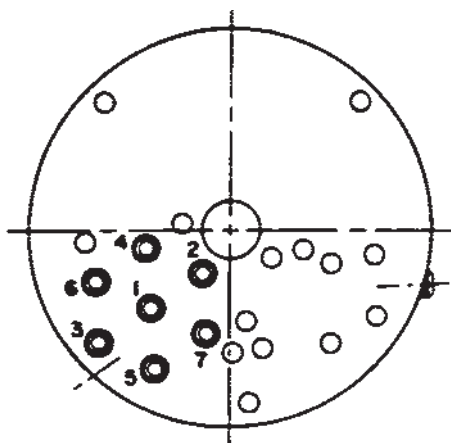
33114 PUMP ASSEMBLY

6 pistons -- 9/32 dia.

Item No.	Part No.	No. Req'd	Description
1	10442	1	Copper Washer (3/8 x 1/4 x 1/32)
2	10002	1	Soc. Hd. Cap Screw (1/4-20 UNC x 3/8 Lg.; Torque to 140/160 in. lbs.)
3	24549	12	Valve Guide
4	10445	12	Compression Spring (.164 O.D. x .718 Lg.)
5	12223	13	Steel Ball (3/16 dia.)
6	10023	7	Soc. Hd. Cap Screw (1/4-28 UNF x 1-1/2 Lg.; Torque to 170/180 in. lbs.; See note below)
7	50411	1	Top Plate
8	10519	1	Soc. Set Screw (1/4-20 UNC x 3/8 Lg.; Torque to 65/70 in. lbs.)
9	41048	1	Valve Head
10	41063	1	Pump Barrel
11	21628	6	Piston



BOLT TIGHTENING SEQUENCE



**NOTE: Assemble in sequence shown.
Lubricate under head and on threads.
Torque to 180 in. lbs.**