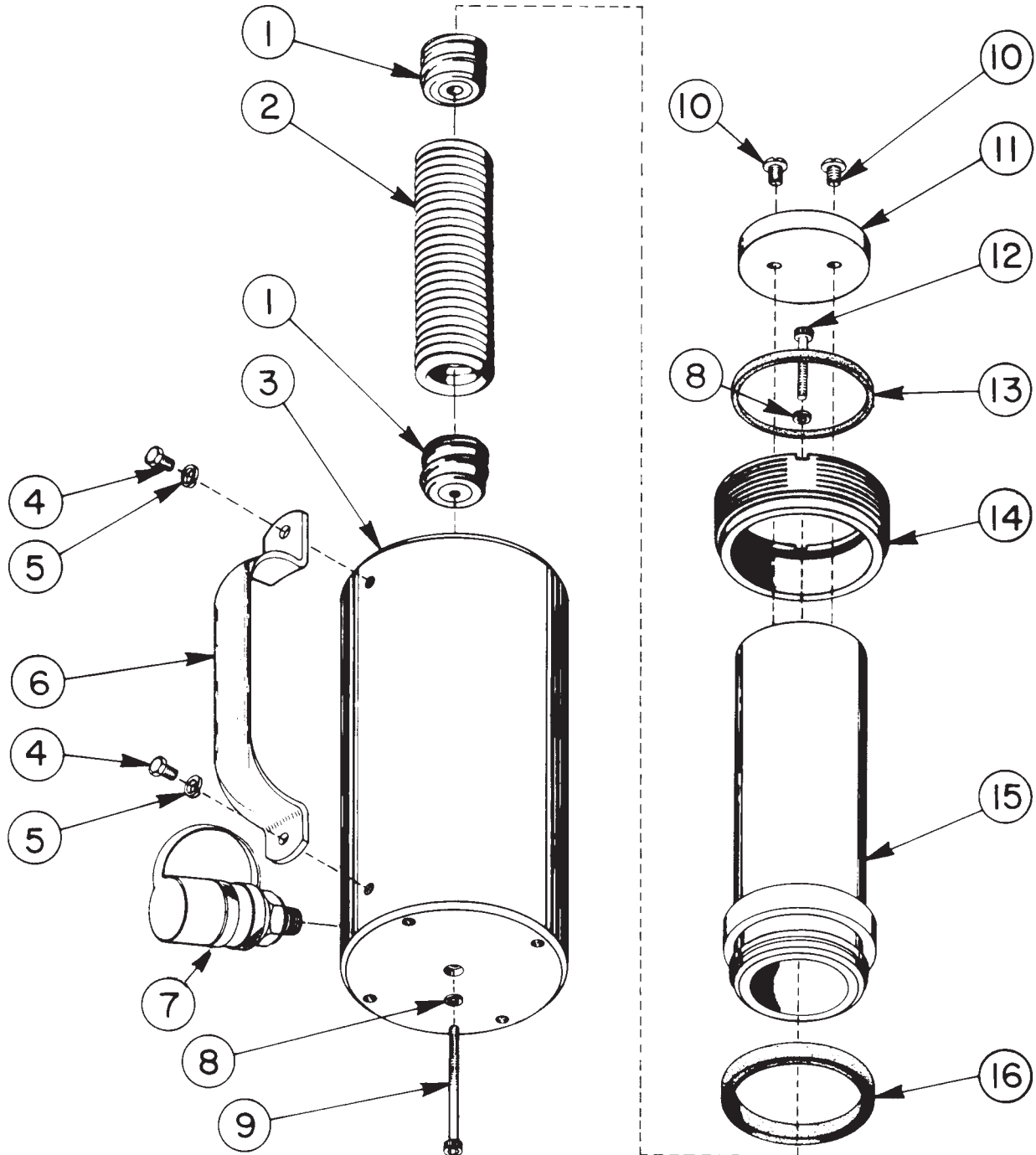


Parts List for:

3RA552S	RA554	RA556-HYUN
3RA556S	RA554K	RA556-IMT
RA552	RA556	RA5510
RA552K	RA556-FEC	RA5510-IMT
		RA5513

MODEL C
SINGLE-ACTING, SPRING RETURN
HYDRAULIC CYLINDER
Max. Capacity: 55.2 Tons at 10,000 PSI



Parts List, Form No. 100586, Back sheet 1 of 2

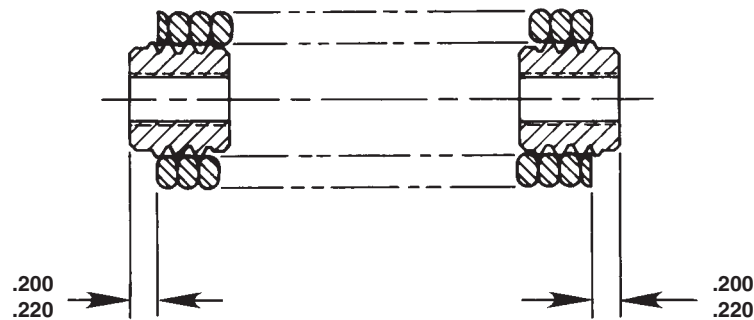
Item No.	Part No.	No. Req'd	Description
1	36170	2	Spring Retainer
2	201483	1	Extension Spring (For RA556, RA556-HYUN, 3RA556S, RA556-IMT, & RA556-FEC)
	204429	1	Extension Spring (For RA552, RA552K & 3RA552S)
	201484	1	Extension Spring (For RA5513)
	215097	1	Extension Spring (For RA5510 & RA5510-IMT)
	250292	1	Extension Spring (For RA554 & RA554K)
3	51585	1	Cylinder Body (For RA556, 3RA556S, RA556-IMT, & RA556-FEC)
	52018	1	Cylinder Body (For RA552, RA552K & 3RA552S)
	58290	1	Cylinder Body (For RA554 & RA554K)
	58043	1	Cylinder Body (For RA556-HYUN)
	61888	1	Cylinder Body (For RA5510 & RA5510-IMT)
	61047	1	Cylinder Body (For RA5513)
4	10005	2	Hex. Hd. Cap Screw (1/4-20 x 1/2 Lg.; All except RA552, RA552K, RA554, RA554K, RA552S & RA556-HYUN)
	10005	4	Hex. Hd. Cap Screw (1/4-20 x 1/2 Lg.; For RA556-HYUN)
5	10244	2	Lockwasher (For 1/4" bolt; All except RA552, RA552K, RA554, RA554K, 3RA552S, & RA556-HYUN)
	10244	4	Lockwasher (For RA556-HYUN)
6	35903BK2	1	Handle (For RA556, 3RA556S, RA556-FEC & RA556-IMT)
	35903BK2	2	Handle (For RA556-HYUN)
	303493	1	Handle (For RA5513)
	308753BK2	1	Handle (For RA5510 & RA5510-IMT)
	420496BK2	1	Handle (For RA552K & RA554K)
7	9796	1	Coupler (For RA552, RA554, RA554K, RA5510, RA5513, RA556-FEC & RA556-HYUN)
	210916	1	Coupler (For 3RA552S & 3RA556S)
	251616	1	Coupler (For RA556-IMT & RA5510-IMT)
8	*12042	2	Copper Washer
9	16110	1	Soc. Hd. Cap Screw (3/8-16 x 3-1/2 Lg.; Torque to 400/425 in. lbs.; For RA554, RA554K, RA556, 3RA556S, RA556-FEC, RA556-IMT, & RA556-HYUN)
	10984	1	Soc. Hd. Cap Screw (3/8-16 x 1-1/2 Lg.; Torque to 400/425 in. lbs.; For RA552, RA552K & 3RA552S)
	16110	2	Soc. Hd. Cap Screw (3/8-16 x 3-1/2 Lg.; Torque to 400/425 in. lbs.; For RA5510, RA5510-IMT, & RA5513)
10	16112	2	Machine Screw (3/8-16 x 3/4 Lg.; Torque to 50/60 in. lbs.)
11	36161	1	Front Plate
12	12577	1	Soc. Hd. Cap Screw (3/8-16 x 1-3/4 Lg.; Torque to 400/425 in. lbs.; For RA552, RA552K, RA554, RA554K, RA556, 3RA552S, 3RA556S, RA556-IMT, RA556-HYUN & RA556-FEC)
13	*16117	1	Wiper
14	35897	1	Retainer Nut (Torque to 90/100 ft. lbs.)
15	52190	1	Piston (For RA556, 3RA556S, RA556-IMT, RA556-HYUN & RA556-FEC)
	52189	1	Piston (For RA552, RA552K & 3RA552S)
	58291	1	Piston (For RA554 & RA554K)
	53324	1	Piston (For RA5510 & RA5510-IMT)
	52191	1	Piston (For RA5513)
16	*13411	1	U-cup Piston Seal

CONTINUED -

Item No.	Part No.	No. Req'd	Description
PARTS INCLUDED BUT NOT SHOWN			
	37782	1	Warning Decal (For RA556, RA552K, 3RA556S, RA556-FEC, RA556-IMT, & RA556-HYUN)
	*203908	1	Warning Decal (For RA552, RA552K, RA554, RA554K, RA5510, RA5510-IMT, RA5513 & 3RA552S)
	350667	1	Trade Name Decal (For RA552)
	350668	1	Trade Name Decal (For RA554)
	420648	1	Trade Name Decal (For RA5510 & RA5510-IMT)
	45627	1	Trade Name Decal (For RA5513)
	350669	1	Trade Name Decal (For RA556, RA556-FEC, & RA556-HYUN)
	305095	1	Trade Name Decal (For 3RA552S)
	305096	1	Trade Name Decal (For 3RA556S)
	309219	1	Trade Name Decal (For RA552K & RA554K)
	9575	1	Needle Valve (For RA556-FEC)
	9681	2	Elbow Fitting (For RA556-FEC)
	9682	1	Straight Fitting (For RA556-IMT, RA5510-IMT & RA556-FEC)

Part numbers marked with an asterisk (*) are contained in Repair Kit No. 300391.

SPRING & RETAINER ASSEMBLY



Refer to any operating instructions included with the product for detailed information about operation, testing, assembly, disassembly, and preventive maintenance.

Items found in this parts list have been carefully tested and selected. **Therefore: Use only genuine Power Team replacement parts!**

Additional questions can be directed to one of our Technical Services Departments.

Note: Removed item #211061 at last revision(s) made to this form.

Sheet No. 2 of 2

Rev 4 Date: 23 Aug 2004