

**MODEL A  
HYDRAULIC TOE JACK****Maximum Capacity: 27.5 Ton**

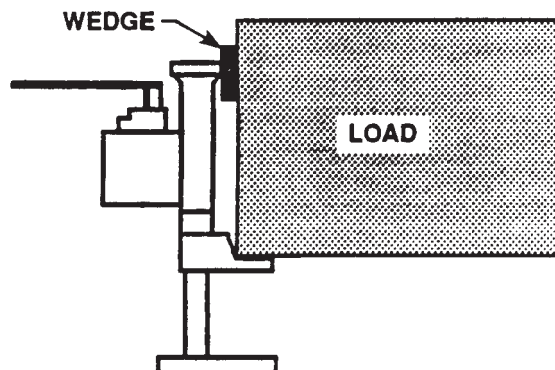
Read and carefully follow the warnings and operating instructions before using this jack. Most problems with new equipment are caused by improper operation or setup.

**NOTE: Inspect the jack upon arrival. The carrier, not the manufacturer, is responsible for any damage resulting from shipment.**

**SAFETY PRECAUTIONS**

**WARNING:** To help prevent personal injury or damage to equipment,

- Do not exceed the maximum load capacity of the jack.
- Do not add additional load to a lifted load.
- Do not use in unstable or hazardous positions.
- Unit must be used on flat surfaces able to carry the load.
- Keep clear of lifted loads.
- The load must be stable during lifting. An unstable load may cause the jack or load to slip.
- Do not use the jack(s) if damaged, altered, or in poor condition.
- Do not lift people or loads with people on them.
- This hydraulic jack is for professional use only and should be used only by persons trained in its use.
- Do not lift at the end of the toe. Fully engage the load with the toe.
- Use only Power Team hydraulic fluid in this unit.
- Do NOT, under any circumstances, tamper with the adjustment of the jack's internal relief valve screw. To do so may cause the jack to fail.
- When lifting by the toe, wedge the head of the jack on the load to avoid bending the column. Refer to illustration at right.
- Read operating instructions and A.N.S.I. B30.1 safety code for jacks.
- The owner of the jack must ensure that all safety-related decals are maintained and replaced as they become hard to read.
- This guide cannot cover every situation, so always do the job with safety first.



## Operation of the Jack

**IMPORTANT:** Do not carry the jack by the jacking lever.

### Lifting a Load

1. Position the load on the toe of the jack.



**WARNING:** Do not lift a load on the end of the toe. Fully engage the load with the toe.

**IMPORTANT:** When lifting by the toe, wedge the head of the jack on the load to avoid bending the column.

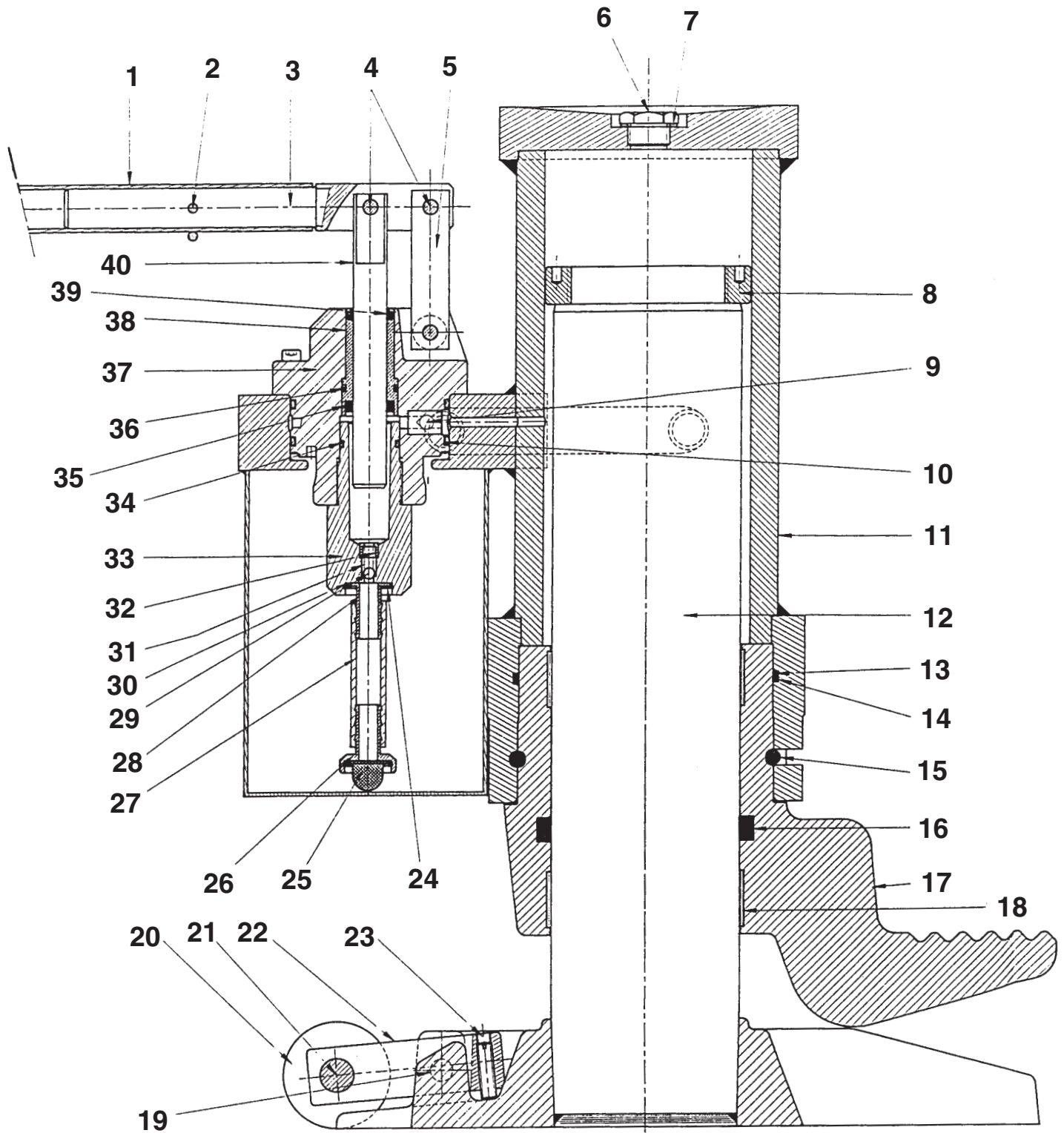
2. Turn the release valve knob in a clockwise direction until it is snug.
3. Pump the jacking lever in an up and down motion.

### Lowering a Load

1. Slowly loosen the release valve knob by turning it in a counterclockwise direction. The more the knob is loosened, the faster the load will be lowered. To stop the jack from lowering a load, tighten the release valve knob by turning it in a clockwise direction.

PARTS LIST

TOE LIFT JACK SIDE VIEW



<b>Item No.</b>	<b>Part No.</b>	<b>No. Req'd</b>	<b>Description</b>
1	J259T-1	1	Lever - Tube
2	250073	1	Pin
3	▼250546	1	Lever
4	▼250547	2	Spindle
5	▼J259T-2	1	Link
6	250558	1	Plug
7	◆250559	1	Seal
8	J259T-3	1	Guide
9	■☆250563	1	Valve
10	☆◆250086	2	Seal
11	J259T-4	1	Jack Body
12	*J259T-5	1	Column
13	▲◆J259T-6	1	Seal
14	▲◆J259T-7	1	Seal / Backup Washer
15	▲*◆J259T-8	1	Spring Ring
16	▲◆J259T-9	1	Cylinder Seal
17	▲J259T-10	1	Toe
18	J259T-11	2	Ring
19	J259T-12	2	Spindle
20	J259T-13	2	Rail Wheel
21	J259T-14	1	Spindle
22	J259T-15	2	Link
23	J259T-16	2	Screw
24	■☆250554	1	Ring
25	■☆250555	1	Filter
26	J259T-17	1	Lower Ferrule
27	J259T-18	1	Suction Tube
28	J259T-19	1	Upper Ferrule
29	■☆250087	4	Ball
30	J259T-20	1	Seal
31	■☆250088	3	Spring
32	■☆250090	2	Perforated Screw
33	☆250553	1	Valve Body
34	☆◆250552	1	Seal
35	☆◆J259T-21	1	Seal
36	☆◆250084	1	Seal
37	☆J259T-22	1	Barrel Pump
38	☆J259T-23	1	Sleeve
39	☆◆J259T-24	1	Seal
40	J259T-25	1	Piston

**PARTS INCLUDED BUT NOT SHOWN**

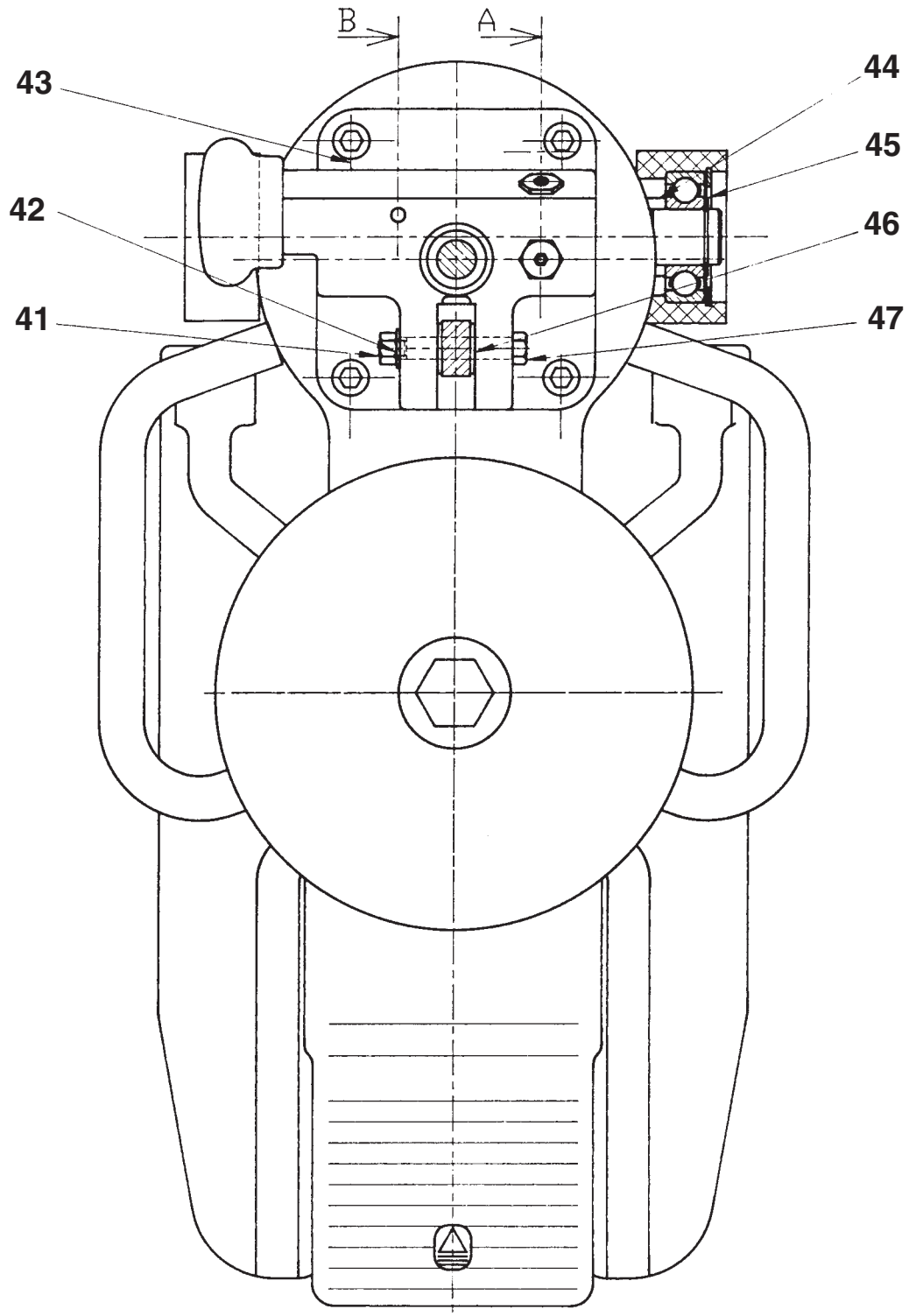
421701	1	Trade Name / Specs / Warning Decal
253234	1	Instruction Decal (Oil Pivot Pins)

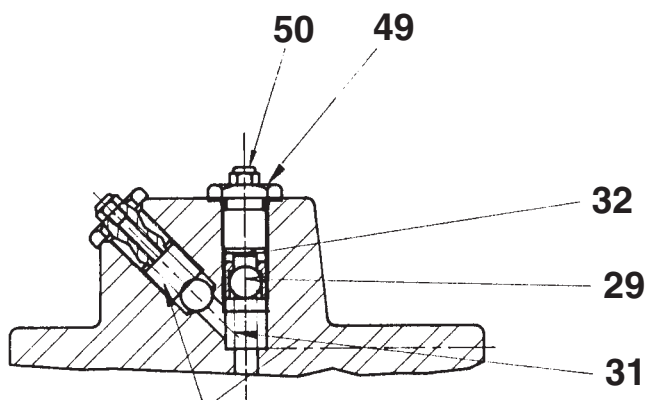
**Key to Repair Kit No.'s**

(See back of sheet 4 of 4 for descriptions of Repair Kits)

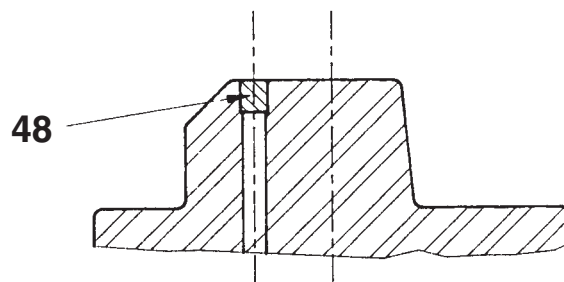
◆ = No. 253616	■ = No. 250592	☆ = No. 253619
* = No. 253617	▲ = No. 253618	▼ = No. 253621

### TOE LIFT JACK TOP VIEW





**SECTION B**



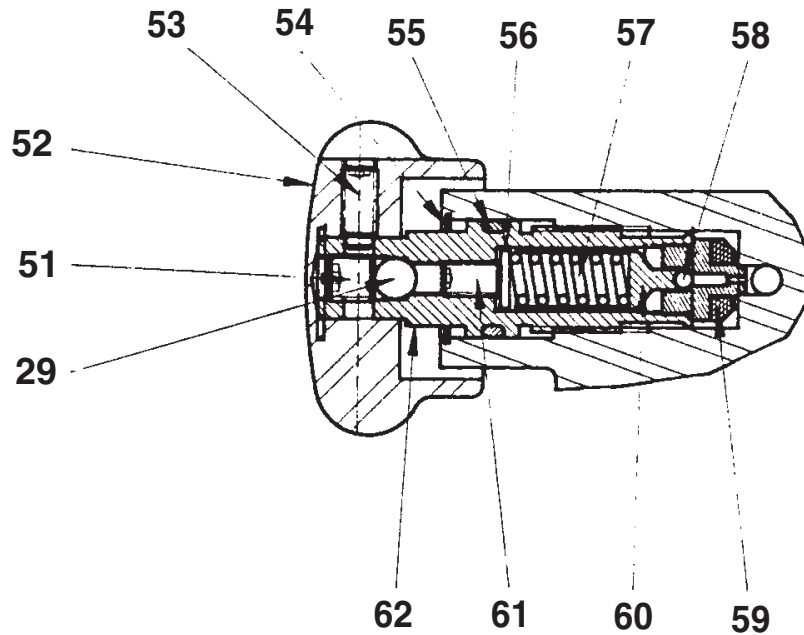
**SECTION A**

Item No.	Part No.	No. Req'd	Description
41	▼250077	3	Nut
42	▼250545	3	Ring
43	250070	4	Screw
44	J259T-26	2	Spacer
45	J259T-27	2	Ring
46	▼250564	2	Washer
47	▼250076	1	Spindle
48	250069	1	Plug
49	☆J259T-28	2	Plug
50	J259T-29	2	Filter

**Key to Repair Kit No.'s**  
 (See back of sheet 4 of 4 for descriptions of Repair Kits)

▼ = No. 253621                      ☆ = No. 253619

### RELEASE VALVE ASSEMBLY



Item No.	Part No.	No. Req'd	Description
51	250583	1	Screw
52	●250100	1	Handle
53	●250543	1	Screw
54	●250099	1	Ring
55	●◆250542	1	Seal
56	250575	1	Washer
57	●250096	1	Spring
58	●250094	1	Ball
59	●250541	1	Nozzle
60	●250095	1	Shutter
61	●250544	1	Screw
62	●250092	1	Discharge Screw

**Key to Repair Kit No.'s**  
 (See back of sheet 4 of 4 for descriptions of Repair Kits)

◆ = No. 253616                      ● = No. 253620

## REPAIR KITS

### ◆ Repair Kit No. 253616 (O-ring Set)

Includes:

1	J259T-8	Spring Ring
1	J259T-6	O-ring
1	J259T-9	O-ring
1	250559	O-ring
1	J259T-7	O-ring
1	250552	O-ring
1	250084	O-ring
1	J259T-21	O-ring
1	250086	O-ring
1	250542	O-ring
1	J259T-24	O-ring

### ▲ Repair Kit No. 253618 (Toe)

Includes:

1	J259T-8	Spring Ring
1	J259T-10	Toe
1	J259T-6	O-ring
1	J259T-9	O-ring
1	J259T-7	O-ring

### \* Repair Kit No. 253617 (Complete Column)

Includes:

1	J259T-5	Column
1	J259T-8	Spring Pin

### ■ Repair Kit No. 250592 (Filter & Valve)

Includes:

2	250087	Bearing
2	250088	Spring
2	250090	Screw
1	250554	Ring
1	250563	Valve
1	250555	Filter

### ☆ Repair Kit No. 253619 (Complete Pump Barrel)

Includes:

1	J259T-22	Barrel of Pump
1	J259T-23	Sleeve
1	250553	Valve Body
1	250552	O-ring
1	250084	O-ring
1	J259T-21	O-ring
2	250086	O-ring
4	250087	Ball
3	250088	Spring
2	250090	Screw
2	J259T-28	Plug
1	J259T-24	O-ring
1	250563	Valve
1	250554	Ring
1	250555	Filter

### ● Repair Kit No. 253620 (Complete Discharge Screw)

Includes:

1	250092	Discharge Screw
1	250541	Nozzle
1	250094	Ball
1	250095	Shutter
1	250096	Spring
1	250543	Screw
1	250542	O-ring
1	250099	Ring
1	250100	Handle
1	250544	Screw

### ▼ Repair Kit No. 253621 (Assembled Lever)

Includes:

1	250546	Lever
1	J259T-2	Link
2	250547	Spindle
1	250076	Spindle
3	250545	Ring
3	250077	Nut
1	J259T-25	Piston
2	250564	Washer