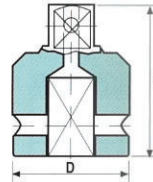


# 3/4" SQUARE DRIVE

## ADAPTERS



SQUARE SIZE		CATALOG No.	D mm	L mm	Weight gr
FEMALE	MALE				
3/4"	1/2"	A1208	44	55	340
3/4"	5/8"	A1210	44	57	350
3/4"	1"	A1216	44	59	400

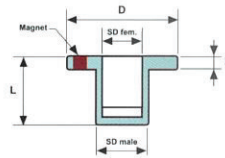


ADAPTERS

## INSERT ADAPTERS



SQUARE SIZE		CATALOG No.	D mm	L mm	Weight gr
FEMALE	MALE				
1/2"	3/4"	AS0812	44	29	108
3/4"	1"	AS1216	54	33	162

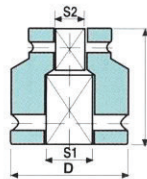


INSERT ADAPTER

## TWO SIDE FEMALE ADAPTERS



SQUARE SIZE		CATALOG No.	D mm	L mm	Weight gr
S 1	S 2				
3/4"	1/2"	AN1208	44	49	320
3/4"	5/8"	AN1210	44	50	370
3/4"	3/4"	AN1212	44	49	390
1"	3/4"	AN1612	54	63	680

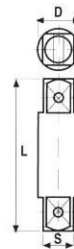


TWO SIDE FEMALE ADAPTERS

## TWO SIDE MALE ADAPTERS



S	CATALOG No.	D mm	L mm	Weight gr
SQUARE SIZE(S)				
3/4"	Z1202	25.4	51	140
3/4"	Z1203	25.4	78	280
3/4"	Z1204	25.4	101	360
3/4"	Z1205	25.4	127	460
3/4"	Z1207	25.4	177	640
3/4"	Z1210	25.4	254	820
3/4"	Z1213	25.4	330	1240
3/4"	Z1215	25.4	381	1350
3/4"	Z1216	25.4	406	1510

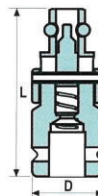


TWO SIDE MALE ADAPTERS

## QUICK CHANGE ADAPTER



SQUARE SIZE	CATALOG No.	D mm	L mm	Weight gr
3/4"	QCAD12	44	78	520



QUICK CHANGE ADAPTER

## EXTENSIONS



SQUARE SIZE	CATALOG No.	D mm	L mm	Weight gr
3/4"	E1203	44	75	470
3/4"	E1204	44	100	550
3/4"	E1205	44	125	690
3/4"	E1207	44	175	900
3/4"	E1210	44	250	1200
3/4"	E1213	44	325	1460

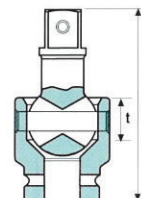


EXTENSIONS

## UNIVERSAL JOINT



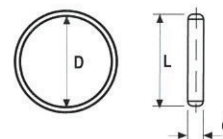
SQUARE SIZE	CATALOG No.	D mm	L mm	Weight gr
3/4"	U1212	44	94	590



UNIVERSAL JOINT

## RETAINING PINS AND RING

FOR SOCKET		CATALOG No.		PIN		RING
SQUARE SIZE	DIAMETER OF SQUARE END	RETAINING PIN	RETAINING RING	d mm	L mm	D mm
3/4"	44	P1244	R1244	4	35	36
3/4"	54	P1254	R1254	4	45	46



RETAINING PINS AND RING