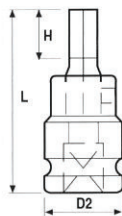


1 1/2" SQUARE DRIVE

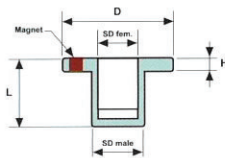
TWO PARTS INHEX DRIVER



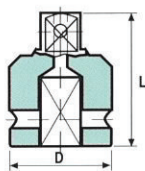
NOMINAL OPENING		CATALOG No.	D2	L	H	Weight
mm	A/F Inch					
22		24M22V	86	109	22	2600
24		24M24V	86	120	24	2600
27		24M27V	86	120	27	2600
30		24M30V	86	125	30	2800
32		24M32V	86	125	32	2800
36		24M36V	86	145	36	3400
38		24M38V	86	145	38	3400
41		24M41V	86	145	41	3520
46		24M46V	86	155	46	4700
50		24M50V	86	155	50	4900
55		24M55V	86	155	55	5100
	1"	2416V	86	120	25	2600
	1 1/8"	2418V	86	120	28	2600
	1 1/4"	2420V	86	125	32	2800
	1 3/8"	2422V	86	145	35	3400
	1 1/2"	2424V	86	145	38	3400
	1 5/8"	2426V	86	145	41	3520
	1 3/4"	2428V	86	155	44	2520
	1 13/16"	2429V	86	155	46	4700
	1 7/8"	2430V	86	155	48	4900
	2"	2432V	86	155	51	4900
	2 1/8"	2434V	86	155	54	5100



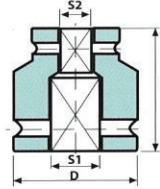
TWO PARTS INHEX



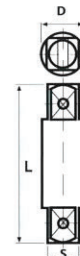
INSERT ADAPTER



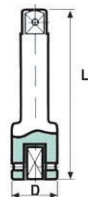
ADAPTERS



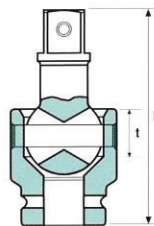
TWO SIDE FEMALE ADAPTERS



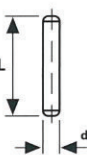
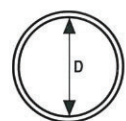
TWO SIDE MALE ADAPTERS



EXTENSIONS



UNIVERSAL JOINT



RETAINING PINS AND RING

ADAPTERS



SQUARE SIZE			D	L	Weight
FEMALE	MALE	CATALOG No.			
1 1/2"	1"	A2416	86	95	2300
1 1/2"	2 1/2"	A2440	86	93	2500
1 1/2"	Spline No. 5	A2495	86	138	2530

INSERT ADAPTERS



SQUARE SIZE			D	L	Weight
FEMALE	MALE	CATALOG No.			
1"	1-1/2"	AS1624	84	45	569
1-1/2"	2-1/2"	AS2440	137	65	2290

TWO SIDE FEMALE ADAPTERS



SQUARE SIZE			D	L	Weight
S 1	S 2	CATALOG No.			
1 1/2"	1"	AN2416	86	83	2050
1 1/2"	1 1/2"	AN2424	86	85	2690
2 1/2"	1 1/2"	AN4024	127	115	6500

TWO SIDE MALE ADAPTERS



SQUARE SIZE(S)		CATALOG No.	D	L	Weight
1 1/2"		Z2404	49	101	1200
1 1/2"		Z2405	49	127	1540
1 1/2"		Z2410	49	254	3420
1 1/2"		Z2420	49	508	6550

EXTENSIONS



SQUARE SIZE	CATALOG No.	D	L	Weight
		mm	mm	gr
1 1/2"	E2406	86	150	3980
1 1/2"	E2409	86	225	4540
1 1/2"	E2412	86	300	5000
1 1/2"	E2420	86	500	8200

UNIVERSAL JOINT



SQUARE SIZE	CATALOG No.	D	L	Weight
		mm	mm	gr
1 1/2"	U2424	86	125	4070

RETAINING PINS AND RING

FOR SOCKET		CATALOG No.		PIN	RING
SQUARE SIZE	DIAMETER OF SQUARE END	RETAINING PIN	RETAINING RING	d	L
				mm	mm
1 1/2"	86	P2486	R2486	6	75
1 1/2"	127	P24127	R24127	6	116